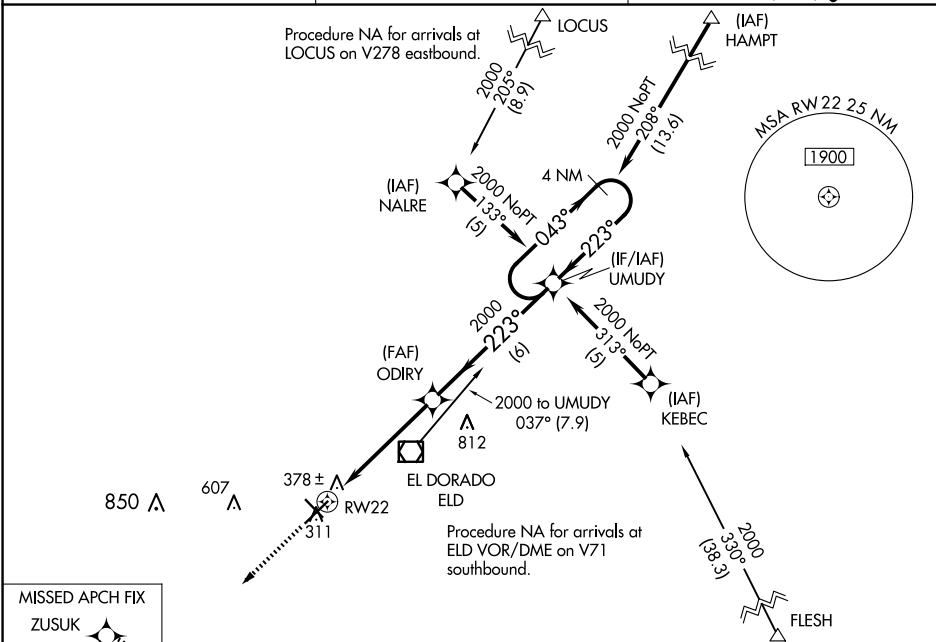


WAAS CH <b>77521</b> <b>W22A</b>	APP CRS <b>223°</b>	Rwy Idg <b>6601</b> TDZE <b>259</b> Apt Elev <b>277</b>
--	------------------------	---

# RNAV (GPS) RWY 22

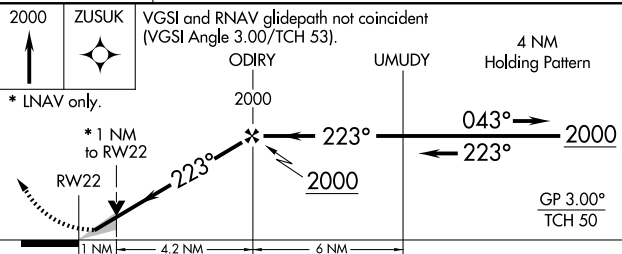
SOUTH ARKANSAS RGNL AT GOODWIN FLD (ELD)

RNP APCH. ▼ For uncompensated Baro-VNAV systems, LNAV/VNAV NA below -15°C or above 54°C. For inop ALS, increase LPV all Cats visibility to 1 1/8 SM, increase LNAV/VNAV all Cats visibility to 1 1/4 SM. Circling Rwy 4, 13, 31, NA at night.	MALSR AS	MISSED APPROACH: Climb to 2000 direct ZUSUK and hold.
ASOS <b>118.325</b>	FORT WORTH CENTER <b>128.2 269.1</b>	UNICOM <b>123.0 (CTAF) 0</b>

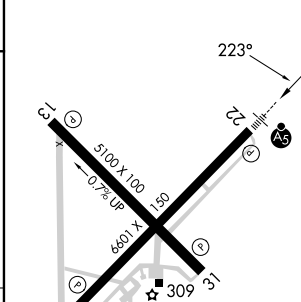


SC-1, 17 APR 2025 to 15 MAY 2025

SC-1, 17 APR 2025 to 15 MAY 2025



ELEV 277	TDZE 259
----------	----------



CATEGORY	A	B	C	D
LPV DA	602-5/8 343 (400-5/8)			
LNAV/VNAV DA	650-7/8 391 (400-7/8)			
LNAV MDA	640-1/2 381 (400-1/2)		640-5/8 381 (400-5/8)	
CIRCLING	740-1 463 (500-1)		920-1 1/4 643 (700-1 1/4) 920-2 643 (700-2)	

MIRL Rwy 13-31 0  
HIRL Rwy 4-22 0