

LOC I-MOD 111.9	APP CRS 288°	Rwy Idg TDZE Apt Elev	5904 91 99
---------------------------	------------------------	-----------------------------	---------------------------------------

ILS or LOC RWY 28R

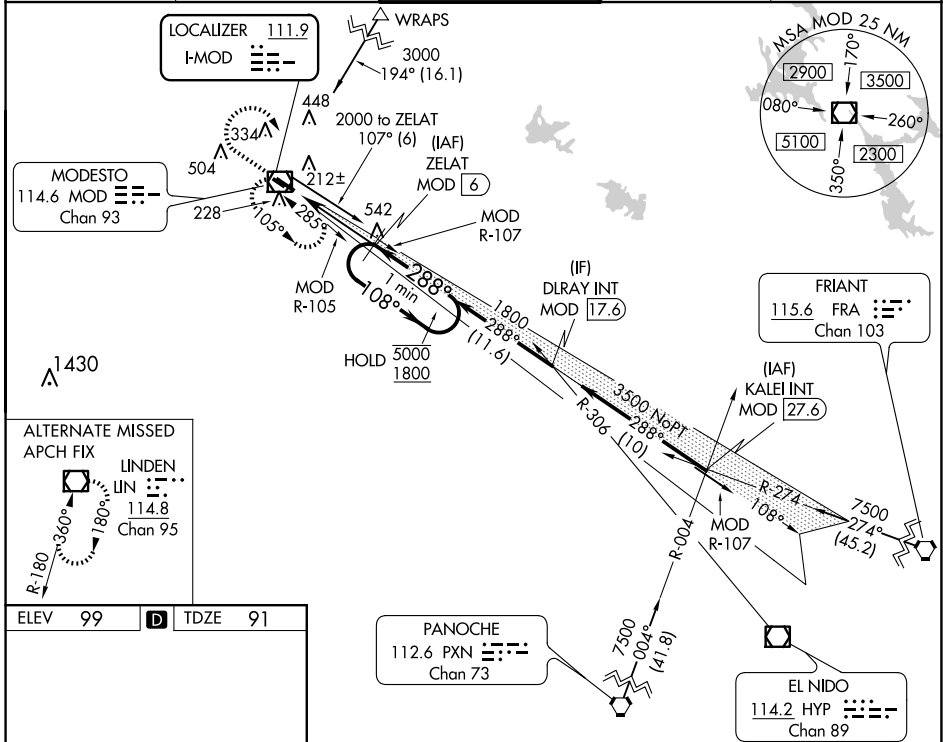
MODESTO CITY-COUNTY-HARRY SHAM FLD (MOD)

DME required for LOC only.

Autopilot coupled approach NA below 1080. DME from MOD VOR/DME. Simultaneous reception of I-MOD and MOD DME required. For inop ALS, increase S-LOC 28R Cat C/D visibility to 1 3/8 SM.

MALSR MISSED APPROACH: Climb to 1500 then climbing right turn to 2000 direct MOD VOR/DME and hold.

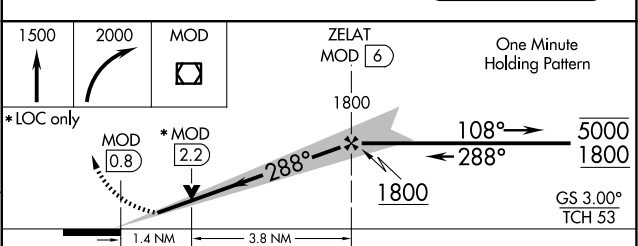
ATIS 127.7	NORCAL APP CON 120.95 269.45	MODESTO TOWER* 125.3 (CTAF) 257.8	GND CON 121.7	UNICOM 122.95
----------------------	--	---	-------------------------	-------------------------



ELEV 99	D	TDZE 91
---------	----------	---------

ALTERNATE MISSED APCH FIX
LINDEN LIN 114.8 Chan 95

REIL Rwy 10L
MIRL Rwy 10R-28L
HIRL Rwy 10L-28R



CATEGORY	A	B	C	D
S-ILS 28R	291-1/2 200 (200-1/2)			
S-LOC 28R	580-1/2	489 (500-1/2)	580-1	489 (500-1)
C CIRCLING	580-1 481 (500-1)	600-1 501 (600-1)	700-1 3/4 601 (700-1 3/4)	820-2 1/4 721 (800-2 1/4)

SW-2, 17 APR 2025 to 15 MAY 2025

SW-2, 17 APR 2025 to 15 MAY 2025