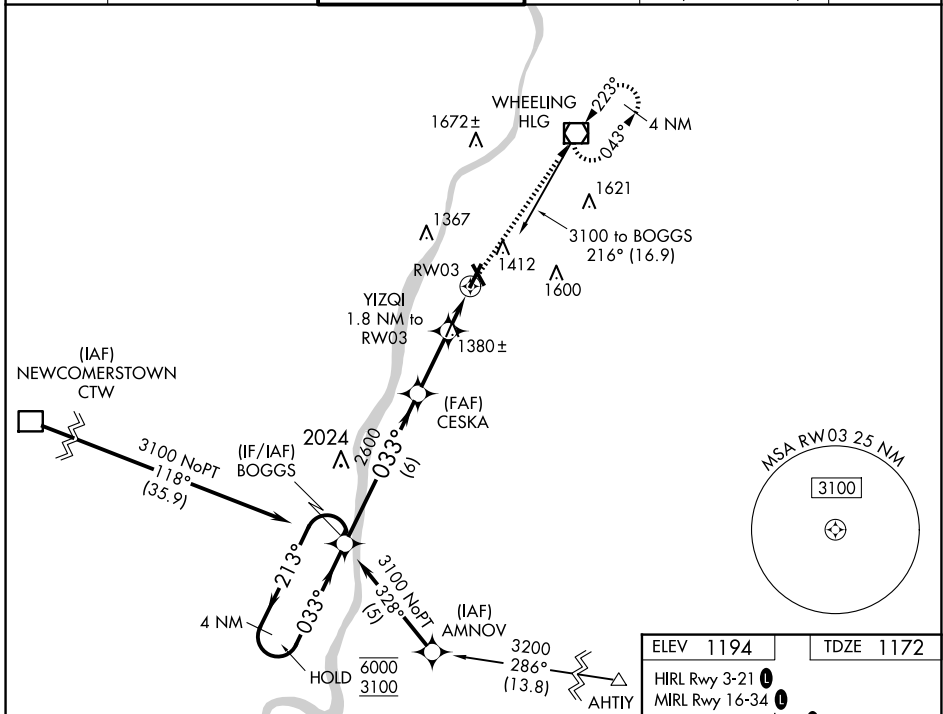


WAAS CH 90513 W03A	APP CRS 033°	Rwy Idg TDZE 1172 Apt Elev 1194	5002 1172 1194
--	------------------------	---	---

RNAV (GPS) RWY 3

WHEELING OHIO COUNTY (HLG)

RNP APCH.		MALSF		MISSED APPROACH: Climb 1600 then climb to 3100 direct HLG VOR/DME and hold, continue climb-in-hold to 3100.	
<p> Inoperative table does not apply to LPV and LNAV/VNAV all Cats and LNAV Cats A/B. For uncompensated Baro-VNAV systems, LNAV/VNAV NA below -17°C or above 54°C.</p>					
ASOS 127.375	PITTSBURGH APP CON 125.275 285.575	WHEELING TOWER * 118.1 (CTAF) 0257.8	GND CON 121.75	CLNC DEL 125.275 (when twr closed)	UNICOM 122.95

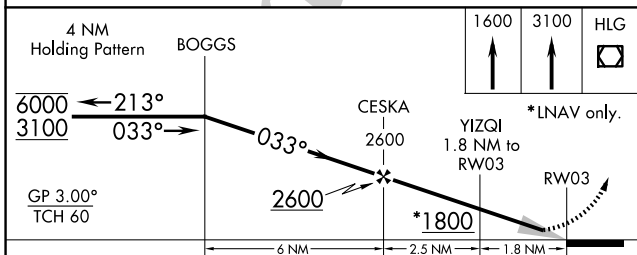


NE-4, 17 APR 2025 to 15 MAY 2025

NE-4, 17 APR 2025 to 15 MAY 2025

ELEV 1194	TDZE 1172
-----------	-----------

- HIRL Rwy 3-21
- MIRL Rwy 16-34
- REIL Rwy 21 and 34



CATEGORY	A	B	C	D
LPV DA		1372/50	200 (200-1)	
LNAV/VNAV DA		1439/50	267 (300-1)	
LNAV MDA	1640/55	468 (500-1)	1640/60	468 (500-1½)
CIRCLING	1720-1 526 (600-1)	1740-1 546 (600-1)	1920-2 726 (800-2)	1920-2¼ 726 (800-2¼)

