

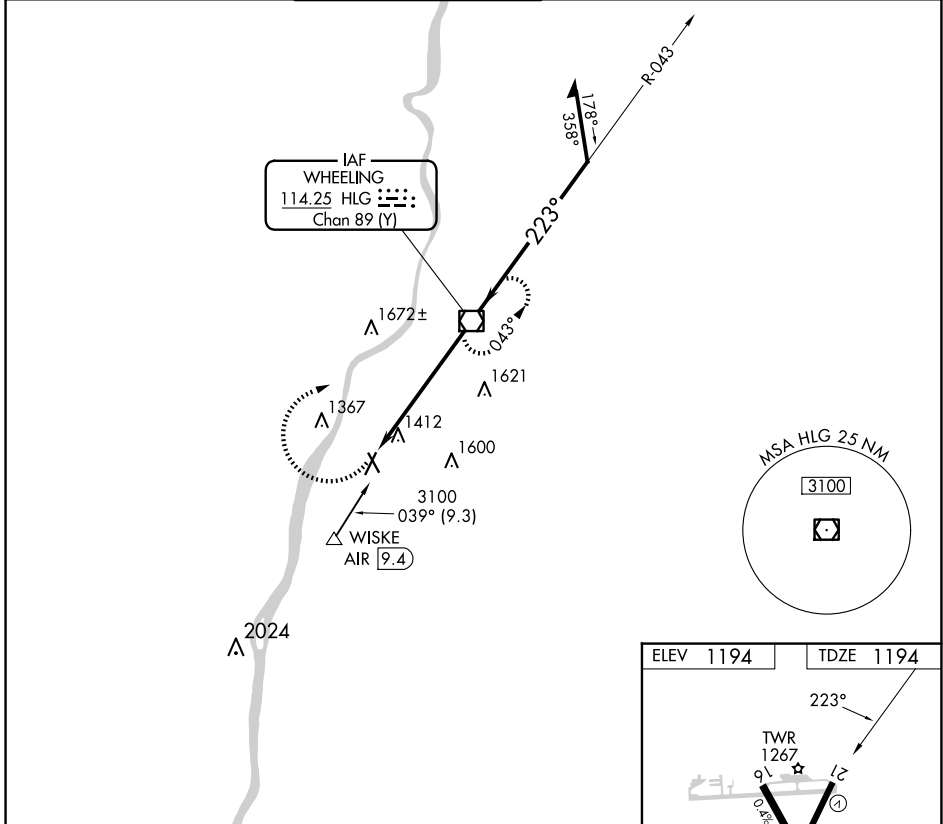
VOR/DME HLG <b>114.25</b> Chan <b>89 (Y)</b>	APP CRS <b>223°</b>	Rwy Idg TDZE Apt Elev	<b>5002</b> <b>1194</b> <b>1194</b>
--	------------------------	-----------------------------	---

# VOR RWY 21

WHEELING OHIO COUNTY (HLG)

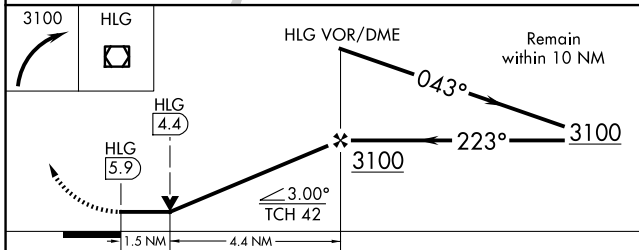
<b>▽</b> <b>▲</b>	Rwy 21 helicopter visibility reduction below RVR 4000 NA.	MISSED APPROACH: Climbing right turn to 3100 direct HLG VOR/DME and hold.
----------------------	---	---

ASOS <b>127.375</b>	PITTSBURGH APP CON <b>125.275 285.575</b>	WHEELING TOWER ★ <b>118.1 (CTAF) 257.8</b>	GND CON <b>121.75</b>	CLNC DEL <b>125.275</b> (when twr closed)	UNICOM <b>122.95</b>
------------------------	--	---	--------------------------	---	-------------------------



NE-4, 17 APR 2025 to 15 MAY 2025

NE-4, 17 APR 2025 to 15 MAY 2025



ELEV 1194	TDZE 1194
-----------	-----------

HIRL Rwy 3-21  
MIRL Rwy 16-34  
REIL Rws 21 and 34

FAF to MAP 5.9 NM					
Knots	60	90	120	150	180
Min:Sec	5:54	3:56	2:57	2:22	1:58

CATEGORY	A	B	C	D
S-21	1700/55 506 (600-1)		1700-1 <sup>3</sup> / <sub>8</sub> 506 (600-1 <sup>3</sup> / <sub>8</sub> )	
<b>CIRCLING</b>	1720-1 526 (600-1)	1740-1 546 (600-1)	1920-2 726 (800-2)	1920-2 <sup>1</sup> / <sub>4</sub> 726 (800-2 <sup>1</sup> / <sub>4</sub> )