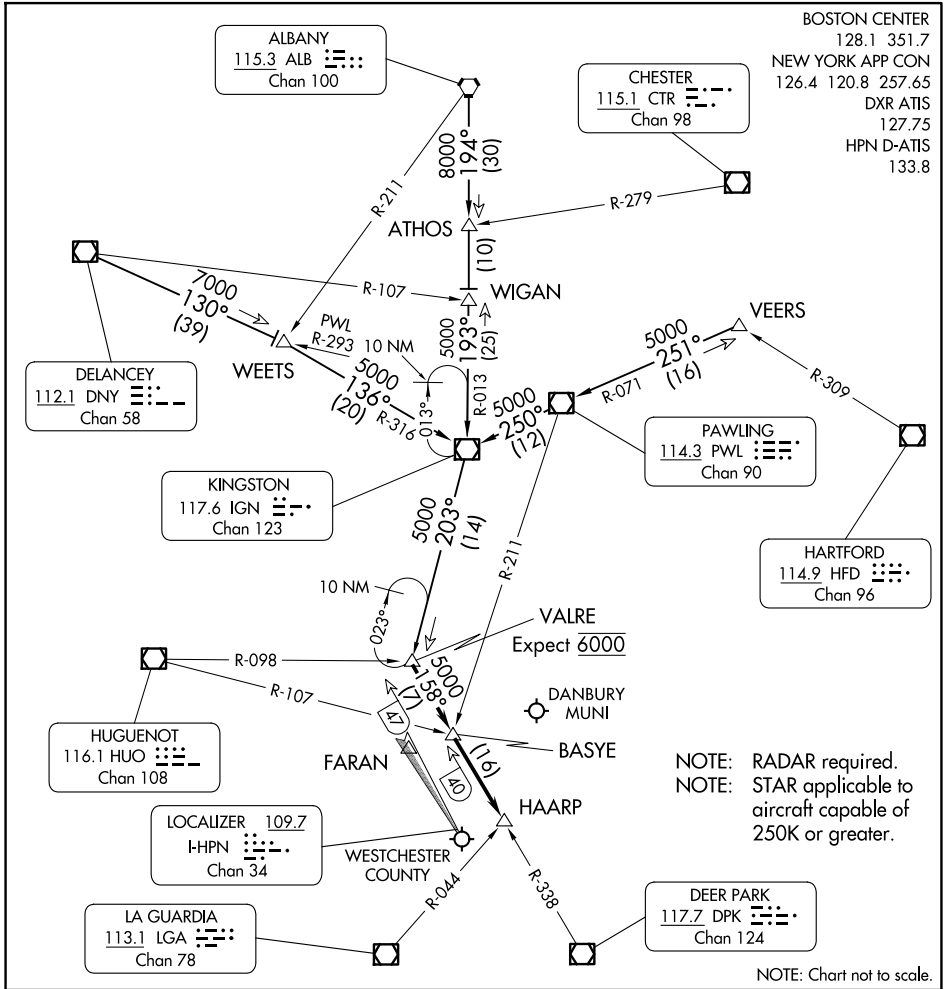


VALRE FIVE ARRIVAL

WHITE PLAINS, NEW YORK



NE-2, 17 APR 2025 to 15 MAY 2025

NE-2, 17 APR 2025 to 15 MAY 2025

BOSTON CENTER
 128.1 351.7
 NEW YORK APP CON
 126.4 120.8 257.65
 DXR ATIS
 127.75
 HPN D-ATIS
 133.8

NOTE: RADAR required.
 NOTE: STAR applicable to aircraft capable of 250K or greater.

ARRIVAL ROUTE DESCRIPTION

ALBANY TRANSITION (ALB.VALRE5): From over ALB VORTAC on ALB R-194 to WIGAN INT, then on IGN R-013 to IGN VOR/DME, then on IGN R-203 to VALRE INT. Thence. . . .

DANCEY TRANSITION (DNY.VALRE5): From over DNY VOR/DME on DNY R-130 to WEETS INT, then on IGN R-316 to IGN VOR/DME, then on IGN R-203 to VALRE INT. Thence. . . .

VEERS TRANSITION (VEERS.VALRE5): From over VEERS INT on PWL R-071 to PWL VOR/DME, then on PWL R-250 to IGN VOR/DME, then on IGN R-203 to VALRE INT. Thence. . . .

. . . .from over VALRE INT on DPK R-338 to BASYE INT, then to HAARP INT. Expect RADAR vectors to final approach course prior to HAARP INT.

VALRE FIVE ARRIVAL

(VALR.VALRE5) 17OCT13

WHITE PLAINS, NEW YORK