

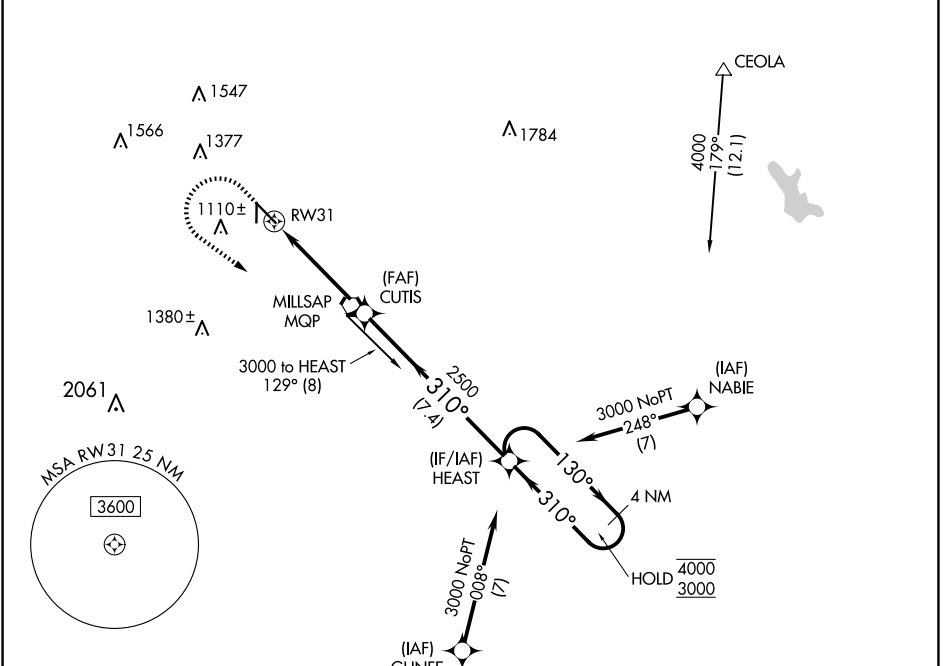
WAAS CH 70639 W31A	APP CRS 310°	Rwy Idg 5596 TDZE 974 Apt Elev 974
----------------------------------------	------------------------	---------------------------------------------------------------

RNAV (GPS) RWY 31

MINERAL WELLS RGNL (MWL)

RNP APCH.	MISSED APPROACH: Climb to 1600 then climbing left turn to 4000 direct HEAST and hold.
<p>▼ For uncompensated Baro-VNAV systems, LNAV/VNAV NA below -9°C or above 54°C. Circling Rws 17, 35 NA at night.</p>	

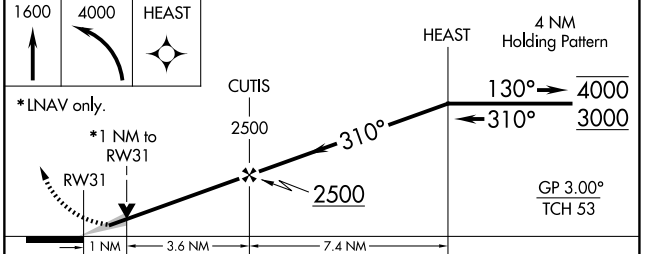
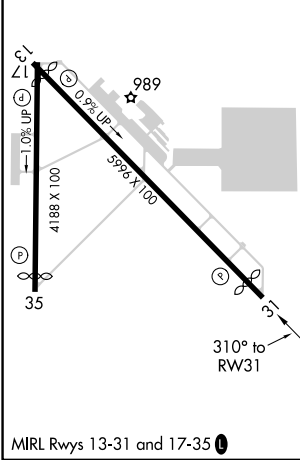
ASOS 135.075	FORT WORTH CENTER 127.0 360.6	UNICOM 122.725 (CTAF) 0
------------------------	-----------------------------------------	-----------------------------------



SC-2, 17 APR 2025 to 15 MAY 2025

SC-2, 17 APR 2025 to 15 MAY 2025

ELEV 974	TDZE 974
----------	----------



CATEGORY	A	B	C	D
LPV DA		1174- ³ / ₄	200 (200- ³ / ₄)	
LNAV/VNAV DA		1224- ³ / ₄	250 (300- ³ / ₄)	
LNAV MDA		1340-1	366 (400-1)	
CIRCLING	1420-1 446 (500-1)	1460-1 486 (500-1)	1740-2 ¹ / ₄ 766 (800-2 ¹ / ₄)	1740-2 ¹ / ₂ 766 (800-2 ¹ / ₂)