

TUCKERNUCK VISUAL RWY 6

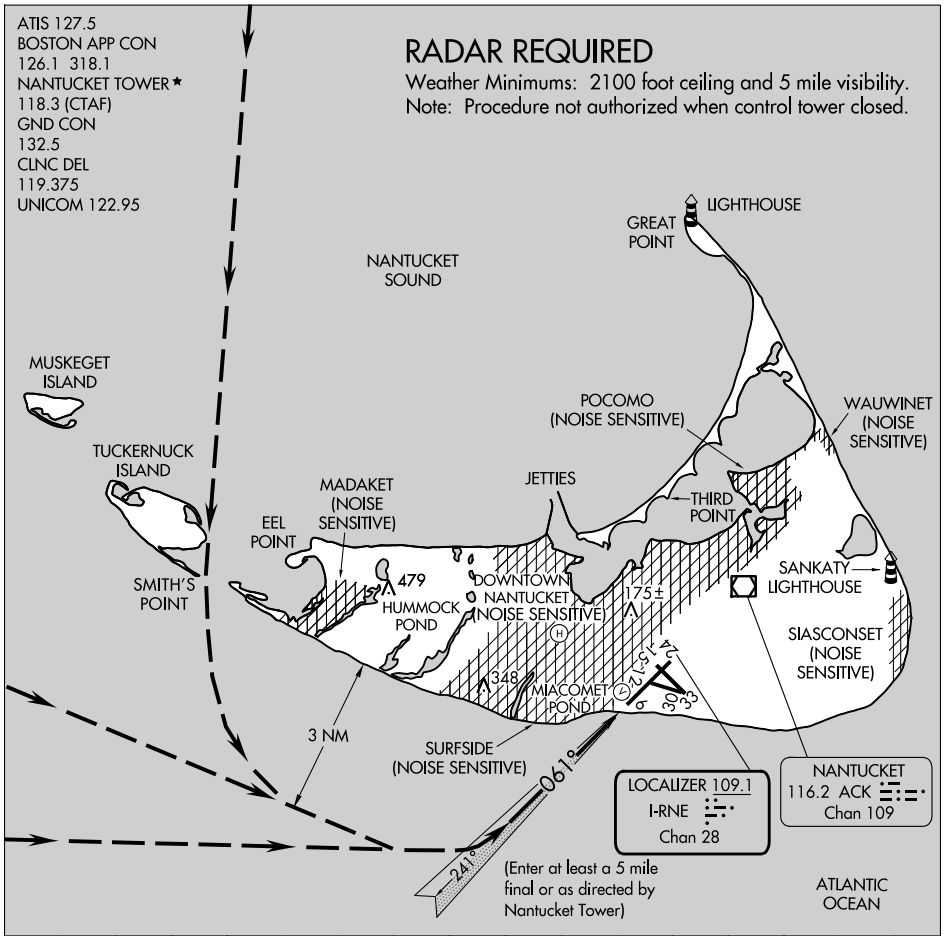
AL-659 (FAA)

NANTUCKET MEML (ACK)
NANTUCKET, MASSACHUSETTS

ATIS 127.5
 BOSTON APP CON
 126.1 318.1
 NANTUCKET TOWER ★
 118.3 (CTAF)
 GND CON
 132.5
 CLNC DEL
 119.375
 UNICOM 122.95

RADAR REQUIRED

Weather Minimums: 2100 foot ceiling and 5 mile visibility.
 Note: Procedure not authorized when control tower closed.



NE-1, 17 APR 2025 to 15 MAY 2025

NE-1, 17 APR 2025 to 15 MAY 2025

1 NM	2	3	4	5	6	7	8	9	10	11	12	13	14	15
------	---	---	---	---	---	---	---	---	----	----	----	----	----	----

TUCKERNUCK VISUAL RWY 6

Amdt 1 22NOV99

41°15'N-70°04'W

NANTUCKET, MASSACHUSETTS
NANTUCKET MEML (ACK)