

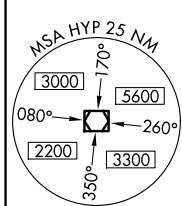
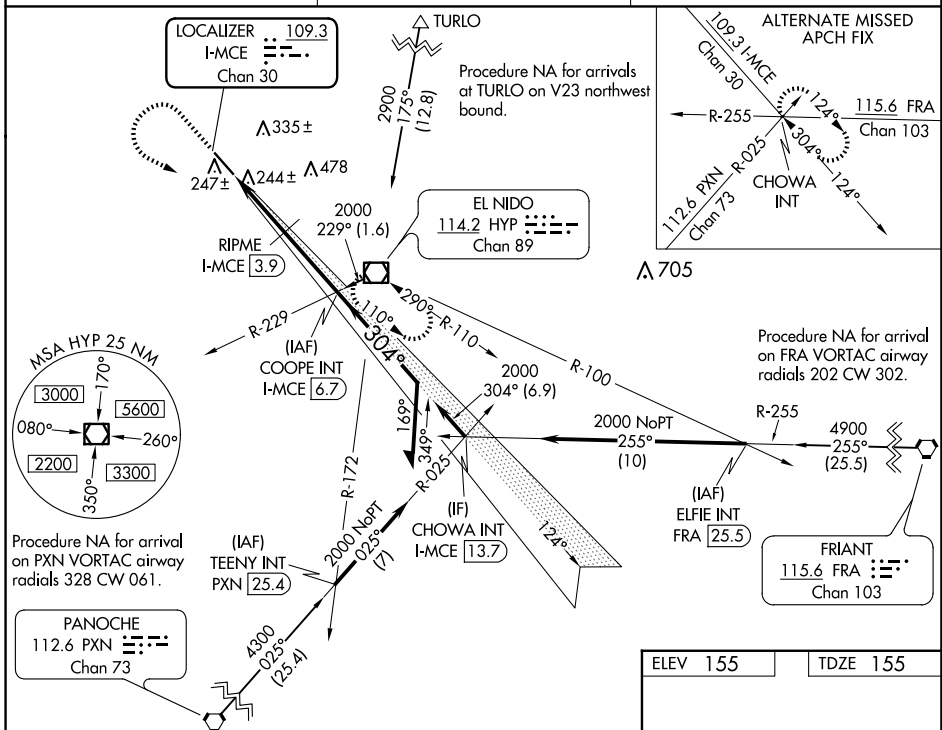
LOC/DME I-MCE 109.3 Chan 30	APP CRS 304°	Rwy Idg TDZE 155 Apt Elev 155
--	------------------------	---

ILS or LOC RWY 30

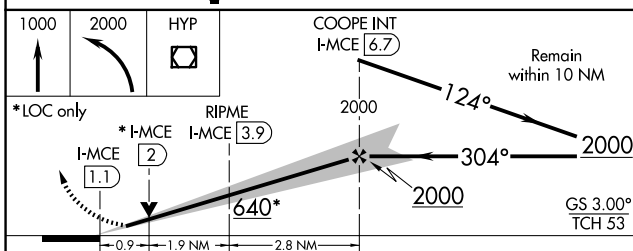
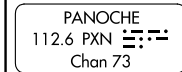
MERCED YOSEMITE RGNL (MCE)

<p>NA For inop ALS, increase S-LOC visibility to 1 SM.</p>	<p>MALSRL</p>	<p>MISSED APPROACH: Climb to 1000 then climbing left turn to 2000 direct HYP VOR/DME and hold.</p>
---	---------------	--

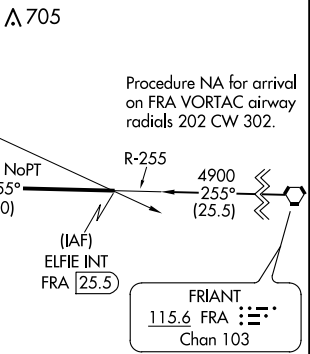
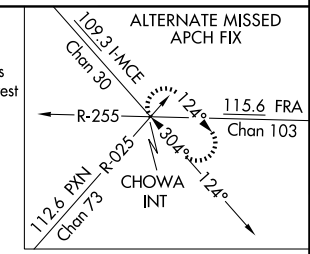
ASOS 132.175	NORCAL APP CON 120.95 269.45	UNICOM 122.7 (CTAF)
------------------------	--	-------------------------------



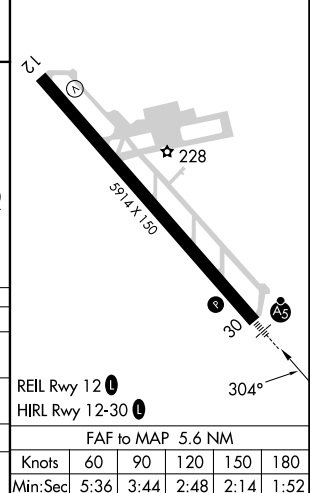
Procedure NA for arrival on PXN VORTAC airway radials 328 CW 061.



CATEGORY	A	B	C	D
S-ILS 30		355-½	200 (200-½)	
S-LOC 30	640-¾	485 (500-¾)	640-1	485 (500-1)
RIPME FIX MINIMUMS				
S-LOC 30		500-¾	345 (400-¾)	



ELEV 155	TDZE 155
----------	----------



FAF to MAP 5.6 NM					
Knots	60	90	120	150	180
Min:Sec	5:36	3:44	2:48	2:14	1:52

SW-2, 17 APR 2025 to 15 MAY 2025

SW-2, 17 APR 2025 to 15 MAY 2025