

LOC I-MTJ 111.3	APP CRS 168°	Rwy Idg TDZE Apt Elev	10000 5708 5759
---------------------------	------------------------	-----------------------------	--

ILS or LOC RWY 17

MONTROSE RGNL (MTJ)

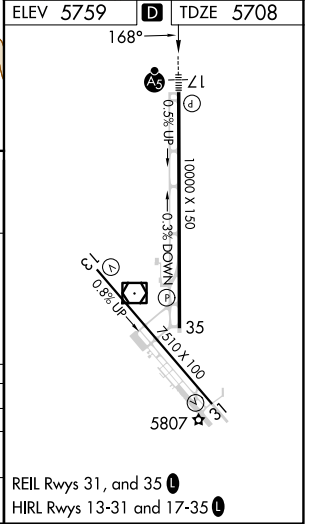
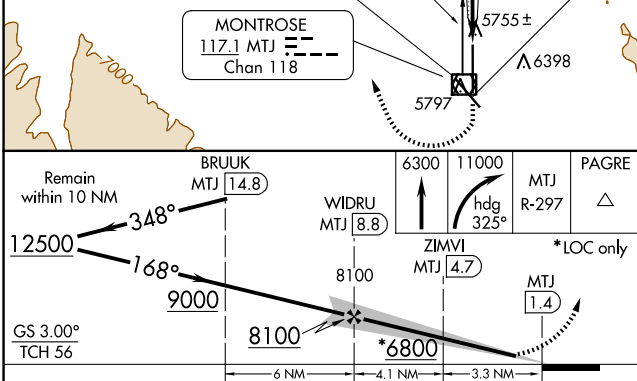
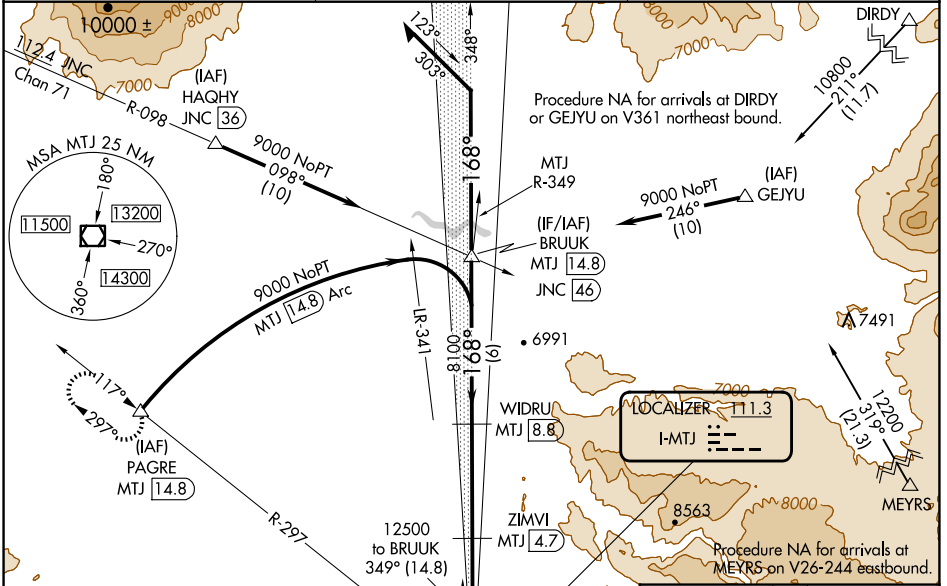
From DIRDY, MYERS, GEJYU: RNAV 1-GPS required. DME required.

NA Circling NA east of Rwy 17 and northeast of Rwy 31. Circling Rwy 31 NA at night. When Circling to Rwy 13 at night, operational VGSI required, remain on or above VGSI glidepath until threshold. DME from MTJ VOR/DME. Simultaneous reception of I-MTJ and MTJ DME required. For inop ALS, increase S-LOC 17 Cat C/D visibility to 3/8 SM.

MALSRS

MISSED APPROACH: Climb to 6300 then climbing right turn to 11000 on heading 325° and MTJ VOR/DME R-297 to PAGRE/MTJ 14.8 DME and hold, continue climb-in-hold to 11000.

ASOS 135.225	DENVER CENTER 127.1 343.65	UNICOM 122.8 (CTAF)
------------------------	--------------------------------------	-------------------------------



CATEGORY	A	B	C	D
S-ILS 17		5908-1/2	200 (200-1/2)	
S-LOC 17		6020-1/2	312 (300-1/2)	
CIRCLING	6280-1 521 (600-1)	6320-1 561 (600-1)	6380-1 3/4 621 (700-1 3/4)	6800-3 1041 (1100-3)

SW-1, 17 APR 2025 to 15 MAY 2025

SW-1, 17 APR 2025 to 15 MAY 2025