

VOR/DME EWN 113.6 Chan 83	APP CRS 226°	Rwy Idg 6153 TDZE 17 Apt Elev 18
---	------------------------	---

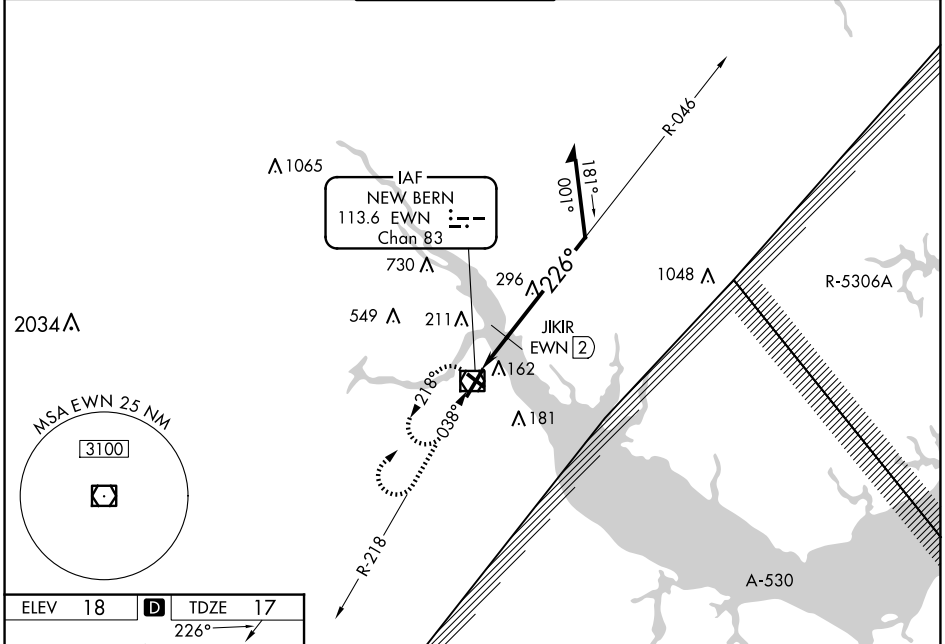
VOR RWY 22

COASTAL CAROLINA RGNL (EWN)

▼ Rwy 14, 32 helicopter visibility reduction below 1 SM NA. Rwy 22 helicopter visibility reduction below ¾ SM NA. Circling Rwy 14, 32 NA at night. JIKIR fix minimums:
 ▲ S-22 Cat D minimums NA when using Cherry Point altimeter setting. When local altimeter setting not received, use Cherry Point altimeter setting and increase all MDAs 40 feet and Circling Cat D visibility ¼ SM and JIKIR fix minimums Circling Cat C/D visibility ¼ SM.

MISSED APPROACH: Climb to 1000 then climbing right turn to 2000 direct EWN VOR/ DME and hold, continue climb-in-hold to 2000.

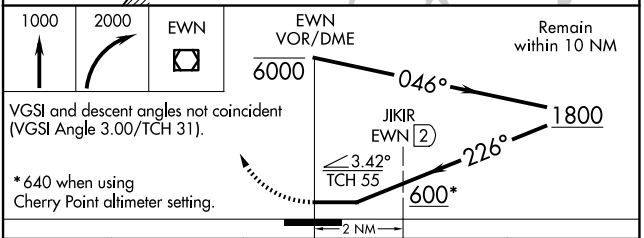
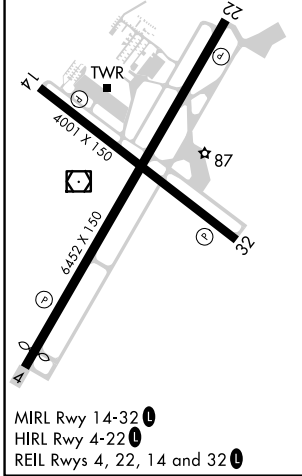
ASOS 118.525	CHERRY POINT APP CON 119.35 374.9	NEW BERN TOWER ★ 124.25 (CTAF) 0	GND CON 121.7	CLNC DEL 121.7	CLNC DEL 120.525 (when twr closed)
------------------------	---	---	-------------------------	--------------------------	---



SE-2, 17 APR 2025 to 15 MAY 2025

SE-2, 17 APR 2025 to 15 MAY 2025

ELEV 18	D	TDZE 17
----------------	----------	----------------



CATEGORY	A	B	C	D
S-22	600-1	583 (600-1)	600-1¾	583 (600-1¾)
C CIRCLING	600-1	582 (600-1)	600-1¾ 582 (600-1¾)	860-2¾ 842 (900-2¾)
JIKIR FIX MINIMUMS (DME REQUIRED)				
S-22	480-1	463 (500-1)	480-1⅜	463 (500-1⅜)
C CIRCLING	480-1 462 (500-1)	520-1 502 (600-1)	600-1½ 582 (600-1½)	860-2¾ 842 (900-2¾)