

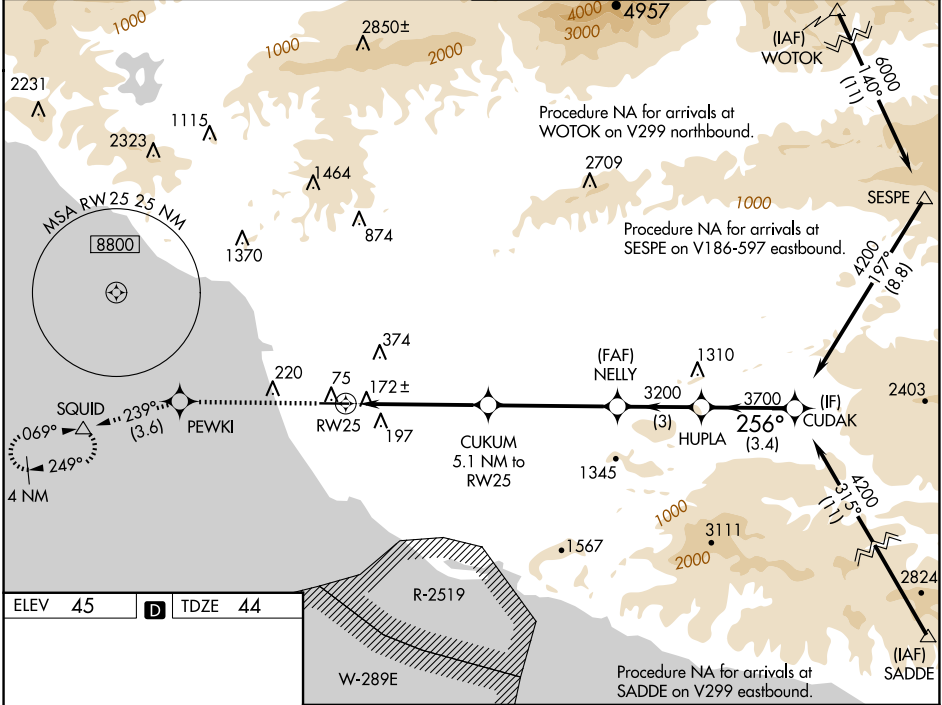
WAAS CH 86299 W25A	APP CRS 256°	Rwy Idg 5500 TDZE 44 Apt Elev 45
--	------------------------	---

RNAV (GPS) RWY 25

OXNARD (OXR)

RNP APCH - GPS.	MALSF	MISSED APPROACH: Climb to 2000 direct PEWKI and on track 239° to SQUID and hold.
<p>⚠ Inoperative table does not apply. Baro-VNAV NA when using Camarillo altimeter setting. For uncompensated Baro-VNAV systems, LNAV/VNAV NA below -15°C or above 43°C. When local altimeter setting not received, use Camarillo altimeter setting and increase LPV DA to 440 feet, LNAV/VNAV DA to 437 feet. Increase all MDAs 20 feet and Circling Cat C visibility ¼ SM.</p>		

ATIS 118.05	POINT MUGU APP CON* 124.7 335.5	OXNARD TOWER* 134.95 (CTAF) 257.8	GND CON 121.9
-----------------------	---	---	-------------------------



ELEV 45	D	TDZE 44				
2000	PEWKI	tr 239°	SQUID	NELLY	HUPLA	CUDAK
↑	✦		△	✦	✦	△
		CUKUM 5.1 NM to RW25		3200	3700	4200
		1.3 NM to RW25		1720	3200	GP 3.00° TCH 58
		1.3 NM	3.8 NM	4.6 NM	3 NM	3.4 NM
CATEGORY	A		B		C	D
LPV DA			424-1		380 (400-1)	
LNAV/VNAV DA			421-1		377 (400-1)	
LNAV MDA	520-1 476 (500-1)		520-1 ³ / ₈ 476 (500-1 ³ / ₈)			
CIRCLING	520-1 475 (500-1)		700-1 ³ / ₄ 655 (700-1 ³ / ₄)		760-2 ¹ / ₄ 715 (800-2 ¹ / ₄)	
REIL Rwy 7	MIRL Rwy 7-25					

SW-3, 17 APR 2025 to 15 MAY 2025

SW-3, 17 APR 2025 to 15 MAY 2025