


WAAS CH 61112 W15A	APP CRS 156°	Rwy Idg TDZE 54 Apt Elev 54	5255
--	------------------------	---	-------------

RNAV (GPS) RWY 15

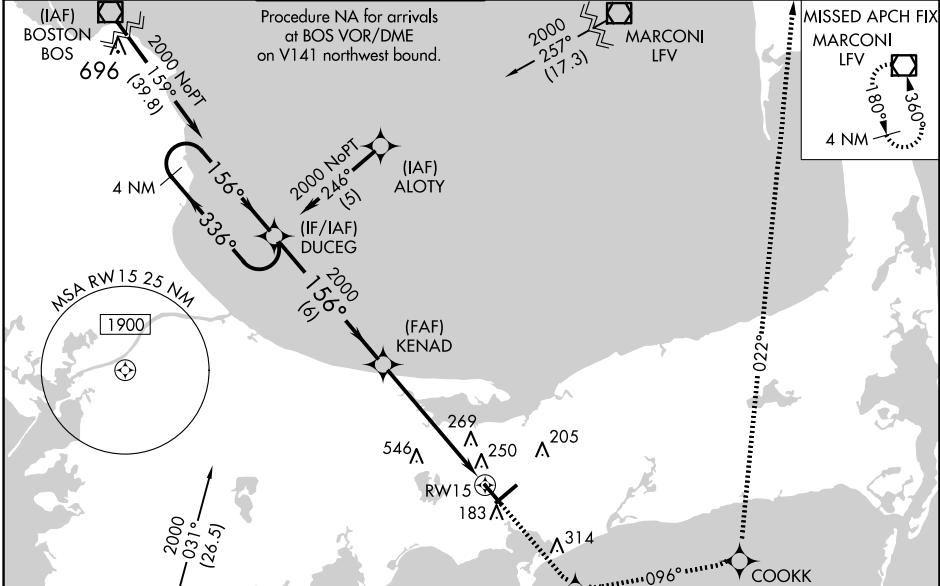
CAPE COD GATEWAY (HYA)

RNP APCH - GPS.

⚠ For uncompensated Baro-VNAV systems, LNAV/VNAV NA below -15°C or above 39°C.
 When local altimeter setting not received, use Chatham altimeter setting: increase LPV DA to 286 feet; increase LNAV/VNAV DA to 601 feet, visibility all Cats to RVR 6000; increase all MDAs 40 feet, LNAV visibility Cats C and D ½ SM, and Circling visibility Cats C and D ¼ SM.
 For inop ALS, increase LNAV/VNAV visibility all Cats to 1½ SM. Circling Rwy 24 at night, operational VGSI required, remain on or above VGSI glidepath until threshold. Rwy 15 helicopter visibility reduction below RVR 4000 NA. For inop ALS when using Chatham altimeter setting, increase LNAV Cats A and B visibility to RVR 5500. **RVR 1800 authorized with use of FD or AP or HUD to DA (NA when using Chatham altimeter setting).

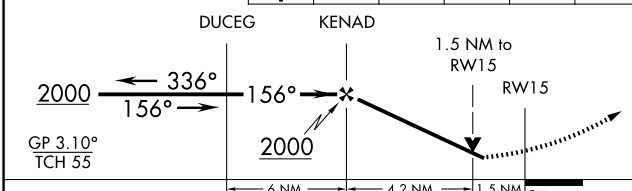
MALSR

MISSED APPROACH:
 Climb to 2000 direct BOWLE and on 096° track to COOKK and on 022° track to LFV VOR/DME and hold.

ATIS 123.8	BOSTON APP CON 118.2 284.6	HYANNIS TOWER * 119.5 (CTAF) 257.8	GND CON 118.45	CLNC DEL 125.15	CLNC DEL 120.125 (When hvr closed)	UNICOM 122.95
----------------------	--------------------------------------	--	--------------------------	---------------------------	--	-------------------------

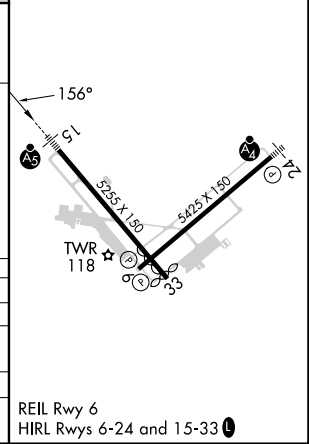


ELEV 54	D	TDZE 54
---------	----------	---------

4 NM Holding Pattern	2000	BOWLE	Ir 096°	COOKK	Ir 022°	LFV
----------------------	------	-------	---------	-------	---------	-----



CATEGORY	A	B	C	D
LPV DA**		254/24	200 (200-½)	
LNAV/VNAV DA		569/60	515 (600-1¼)	
LNAV MDA	600/40	546 (600-¾)	600/60	546 (600-1¼)
CIRCLING	600-1	546 (600-1)	860-2¼ 806 (900-2¼)	860-2½ 806 (900-2½)



NE-1, 17 APR 2025 to 15 MAY 2025

NE-1, 17 APR 2025 to 15 MAY 2025