

# VOR RWY 6

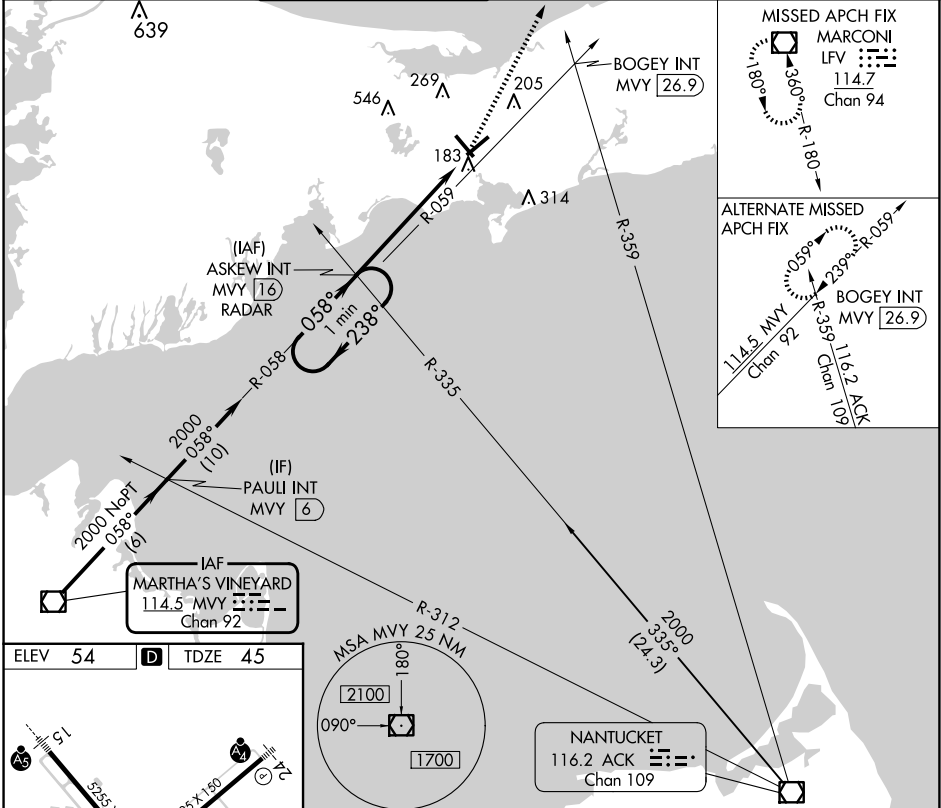
CAPE COD GATEWAY (HYA)

VOR/DME M <sup>VY</sup>	APP CRS	Rwy Idg	<b>5019</b>
<b>114.5</b>	<b>058°</b>	TDZE	<b>45</b>
Chan <b>92</b>		Apt Elev	<b>54</b>

**⚠** When local altimeter setting not received, use Chatham altimeter setting and increase all MDAs 40 feet and S-6 Cat A and Circling Cat C/D visibility 1/4 SM.  
**⚠** Rwy 6 helicopter visibility reduction below 3/4 SM NA. Circling Rwy 24 at night, operational VGSI required, remain on or above VGSI glidepath until threshold.

**MISSED APPROACH:** Climb to 2000 direct LFV VOR/DME and hold, continue climb-in-hold to 3000.

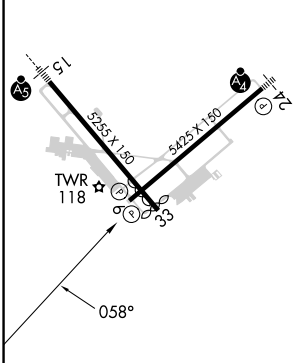
ATIS <b>123.8</b>	BOSTON APP CON <b>118.2 284.6</b>	HYANNIS TOWER * <b>119.5 (CTAF) 257.8</b>	GND CON <b>118.45</b>	CLNC DEL <b>125.15</b>	CLNC DEL <b>120.125</b> (When twr closed)	UNICOM <b>122.95</b>
----------------------	--------------------------------------	----------------------------------------------	--------------------------	---------------------------	-------------------------------------------------	-------------------------



NE-1, 17 APR 2025 to 15 MAY 2025

NE-1, 17 APR 2025 to 15 MAY 2025

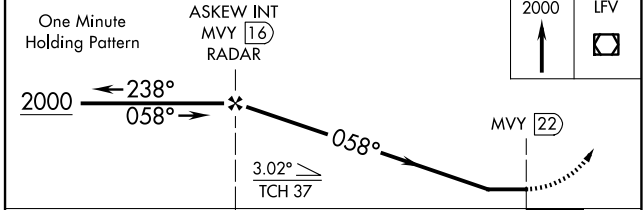
ELEV 54	<b>D</b>	TDZE 45
---------	----------	---------



REIL Rwy 6  
HIRL Rwys 6-24 and 15-33  
FAF to MAP 6 NM

Knots	60	90	120	150	180
Min:Sec	6:00	4:00	3:00	2:24	2:00

CIRCLING



CATEGORY	A	B	C	D
S-6	900-1 855 (900-1)	900-1 1/4 855 (900-1 1/4)	900-2 1/2 855 (900-2 1/2)	855 (900-2 1/2)
<input checked="" type="checkbox"/> CIRCLING	900-1 1/4	846 (900-1 1/4)	900-2 1/2 846 (900-2 1/2)	900-2 3/4 846 (900-2 3/4)

# VOR RWY 6