

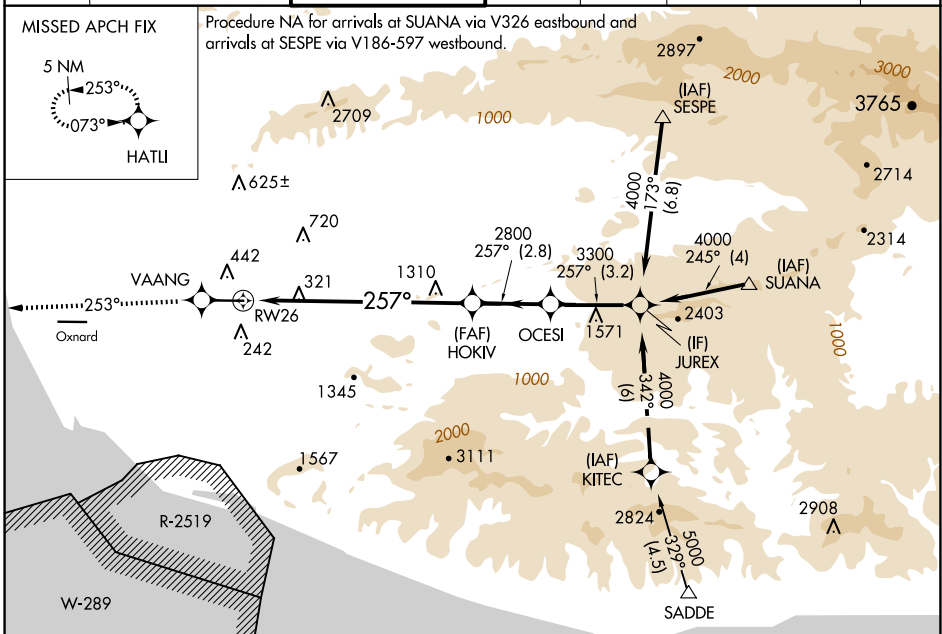
WAAS CH 58202 W26A	APP CRS 257°	Rwy Idg TDZE Apt Elev	6013 77 77
--	------------------------	-----------------------------	---------------------------------------

RNAV (GPS) Z RWY 26

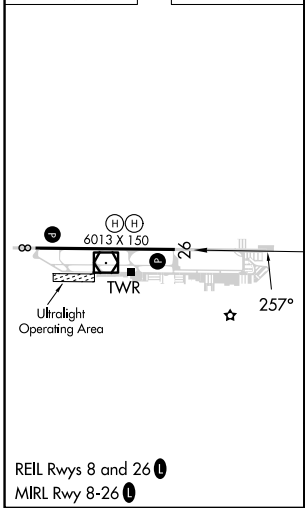
CAMARILLO (CMA)

V DME/DME RNP -0.3 NA. If local altimeter setting not received, use Oxnard altimeter setting and increase DA 18 feet.	MISSED APPROACH: Climb to 3000 direct VAANG and via 253° track to HATLI and hold.
---	---

ATIS 126.025	POINT MUGU APP CON * 124.7 335.5	CAMARILLO TOWER * 128.2 (CTAF) 0 269.4	GND CON 121.8	CLNC DEL 121.8	POINT MUGU CLNC DEL 120.75 279.55	UNICOM 122.95
------------------------	--	--	-------------------------	--------------------------	---	-------------------------



ELEV 77	TDZE 77
---------	---------



3000	VAANG	253° tr	HATLI	JUREX	Procedure Turn NA
↑	⊕	⊕	⊕	⊕	
	HOKIV	OCESI	JUREX		
	2800	3300	4000		
	257°	257°	257°		
	8.2 NM	2.8 NM	3.2 NM		
CATEGORY	A	B	C	D	
LPV DA		327-3/4	250 (300-3/4)		

GP 3.00°
TCH 48

SW-3, 17 APR 2025 to 15 MAY 2025

SW-3, 17 APR 2025 to 15 MAY 2025