

KREST THREE DEPARTURE

AL-688 (FAA)

REDDING RGNL (R.DD)
REDDING, CALIFORNIA

OAKLAND CENTER
132.2 350.3
ATIS
124.1
GND CON
121.7
REDDING TOWER ★
119.8 (CTAF) 269.25

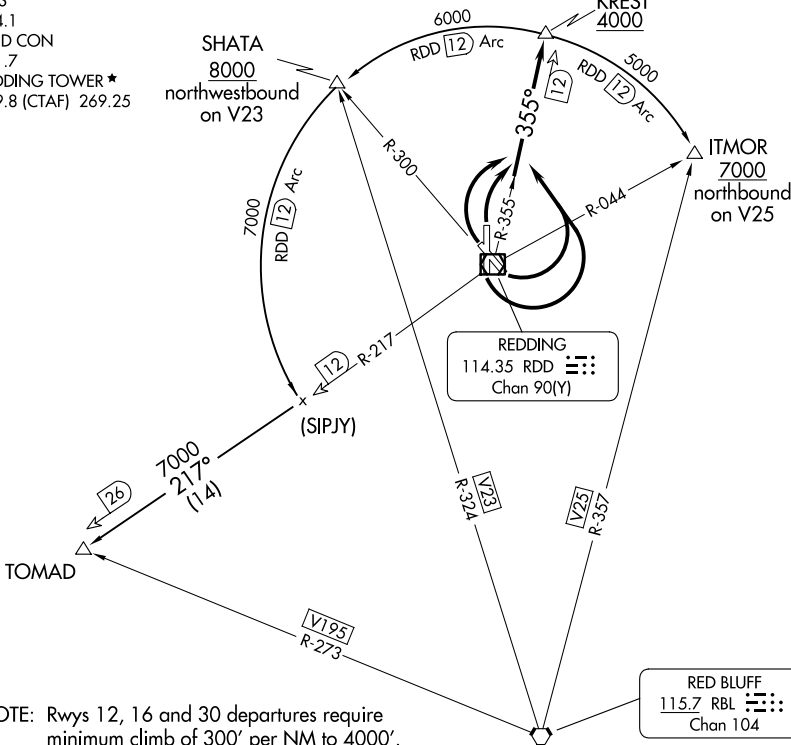
SHATA
8000
northwestbound
on V23

KREST
4000

ITMOR
7000
northbound
on V25

REDDING
114.35 RDD
Chan 90(Y)

RED BLUFF
115.7 RBL
Chan 104



- NOTE: Rwsys 12, 16 and 30 departures require minimum climb of 300' per NM to 4000'.
- NOTE: Rwy 34 departure requires minimum climb of 320' per NM to 4000'.
- NOTE: DME required.

NOTE: Chart not to scale.

DEPARTURE ROUTE DESCRIPTION

TAKEOFF RUNWAYS 12 and 16: Turn left immediately after departure to intercept and proceed on the RDD R-355 to KREST DME Fix. Cross KREST DME Fix at or above 4000, thence on (transition) or (assigned route).

TAKEOFF RUNWAYS 30 and 34: Turn right immediately after departure to intercept and proceed on RDD R-355 to KREST DME Fix. Cross KREST DME Fix at or above 4000, thence on (transition) or (assigned route).

ITMOR TRANSITION (KREST3.ITMOR): From over KREST DME Fix on RDD 12 DME Arc clockwise to ITMOR INT.

SHATA TRANSITION (KREST3.SHATA): From over KREST DME Fix on RDD 12 DME Arc counterclockwise to SHATA INT.

TOMAD TRANSITION (KREST3.TOMAD): From over KREST DME Fix on RDD 12 DME Arc counterclockwise to RDD R-217, thence on RDD R-217 to TOMAD INT.

KREST THREE DEPARTURE

(KREST3.KREST) 30MAR95

REDDING, CALIFORNIA
REDDING RGNL (R.DD)

SW-2, 17 APR 2025 to 15 MAY 2025

SW-2, 17 APR 2025 to 15 MAY 2025