

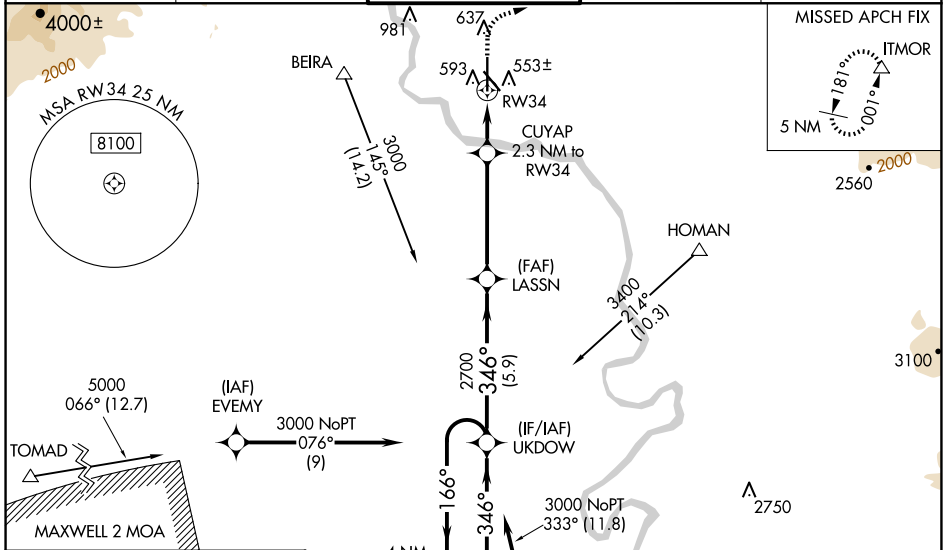
WAAS CH 56402 W34A	APP CRS 346°	Rwy Idg TDZE Apt Elev	6997 499 505
--	------------------------	-----------------------------	---

RNAV (GPS) RWY 34

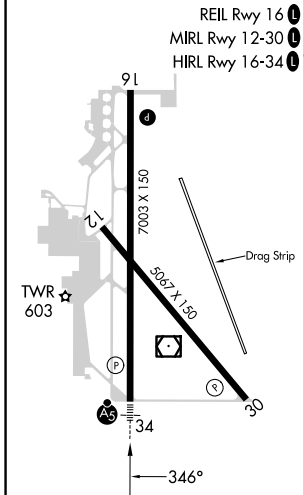
REDDING RGNL (RDD)

RNP APCH.	MALS R	MISSED APPROACH: Climb to 1700 then climbing right turn to 5000 direct ITMOR, continue climb-in-hold to 5000.
<p>▼ For uncompensated Baro-VNAV systems, LNAV/VNAV NA below -4°C or above 54°C. For inop ALS, increase LNAV/VNAV all Cats visibility to ¾ SM and LNAV Cat C, D visibility to 1 SM.</p>		

ATIS 124.1	OAKLAND CENTER 132.2 350.3	REDDING TOWER * 119.8(CTAF) 0 269.25	GND CON 121.7	UNICOM 122.95
----------------------	--------------------------------------	---	-------------------------	-------------------------

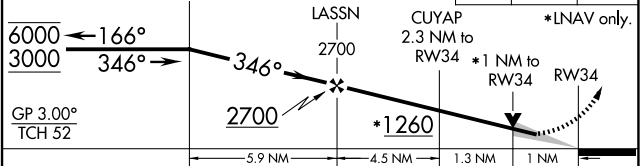


ELEV 505	D	TDZE 499
----------	----------	----------



VGSI and RNAV glidepath not coincident (VGSI Angle 3.00/TCH 55).

1700	5000	ITMOR
↑	↷	△



CATEGORY	A	B	C	D
LPV DA		699-½	200 (200-½)	
LNAV/VNAV DA		754-½	255 (300-½)	
LNAV MDA	860-½	361 (400-½)	860-⅝	361 (400-⅝)
C CIRCLING	940-1 435 (500-1)	1000-1 495 (500-1)	1120-1¾ 615 (700-1¾)	1340-2¾ 835 (900-2¾)

SW-2, 17 APR 2025 to 15 MAY 2025

SW-2, 17 APR 2025 to 15 MAY 2025