

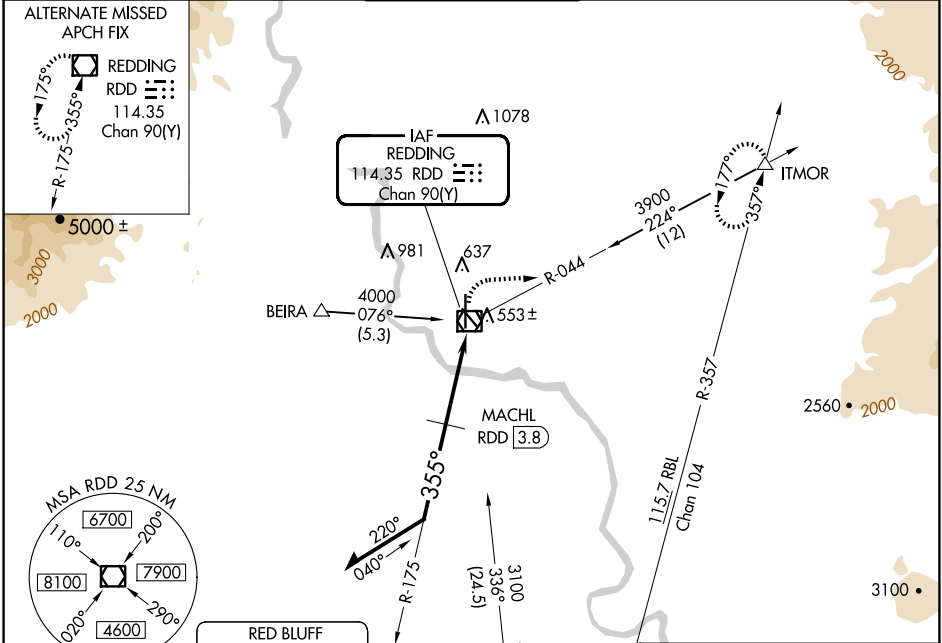
VOR/DME RDD 114.35 Chan 90(Y)	APP CRS 355°	Rwy Idg TDZE 499 Apt Elev 505
--	------------------------	---

VOR RWY 34

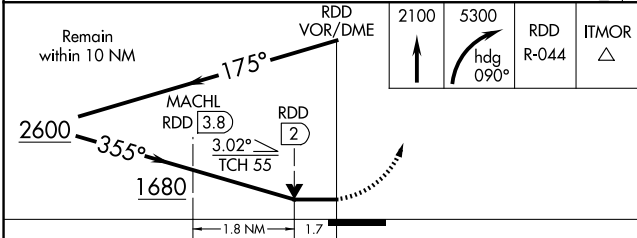
REDDING RGNL (RDD)

<p>▽ Inop table does not apply to S-34 Cats C/D. MACHL fix minimums: for inop ALS, increase S-34 Cat C/D visibility to 1 3/4 SM.</p>	<p>MALSRL</p>	<p>MISSED APPROACH: Climb to 2100 then climbing right turn to 5300 on heading 090° and on RDD VOR/DME R-044 to ITMOR INT and hold, continue climb-in-hold to 5300.</p>
---	---------------	--

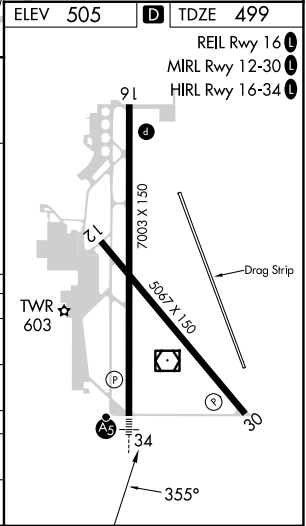
ATIS 124.1	OAKLAND CENTER 132.2 350.3	REDDING TOWER ★ 119.8(CTAF) 269.25	GND CON 121.7	UNICOM 122.95
----------------------	--------------------------------------	--	-------------------------	-------------------------



ELEV 505	TDZE 499
----------	----------



CATEGORY	A	B	C	D
S-34	1680-3/4 1181 (1200-3/4)	1680-1 1181 (1200-1)	1680-3	1181 (1200-3)
C CIRCLING	1680-1 1/4 1175 (1200-1 1/4)	1680-1 1/2 1175 (1200-1 1/2)	1680-3	1175 (1200-3)
MACHL FIX MINIMUMS				
S-34	1100-1/2	601 (600-1/2)	1100-1 3/8	601 (600-1 3/8)
C CIRCLING	1100-1	595 (600-1)	1120-1 3/4 615 (700-1 3/4)	1340-2 3/4 835 (900-2 3/4)



SW-2, 17 APR 2025 to 15 MAY 2025

SW-2, 17 APR 2025 to 15 MAY 2025