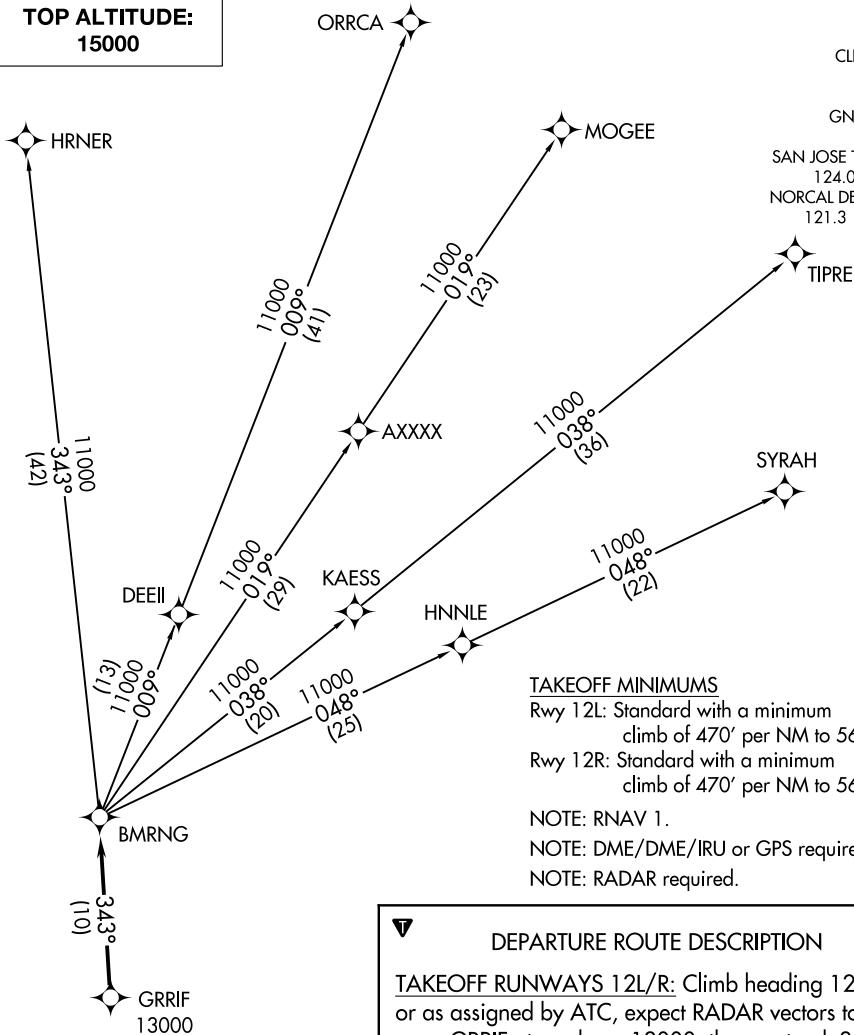


BMRNG FOUR DEPARTURE (RNAV)

**TOP ALTITUDE:
15000**

D-ATIS 126.95
CLNC DEL 118.0
CPDLC GND CON 121.7
SAN JOSE TOWER * 124.0 257.6
NORCAL DEP CON 121.3 270.35



TAKEOFF MINIMUMS

Rwy 12L: Standard with a minimum climb of 470' per NM to 5600.
Rwy 12R: Standard with a minimum climb of 470' per NM to 5600.

NOTE: RNAV 1.
NOTE: DME/DME/IRU or GPS required.
NOTE: RADAR required.

DEPARTURE ROUTE DESCRIPTION

TAKEOFF RUNWAYS 12L/R: Climb heading 126° or as assigned by ATC, expect RADAR vectors to cross GRRIF at or above 13000, then on track 343° to BMRNG, thence
. . . . on (transition). Maintain 15000. Expect filed altitude 10 minutes after departure.

HRNER TRANSITION (BMRNG4.HRNER)

MOGEE TRANSITION (BMRNG4.MOGEE)

ORRCA TRANSITION (BMRNG4.ORRCA)

SYRAH TRANSITION (BMRNG4.SYRAH)

TIPRE TRANSITION (BMRNG4.TIPRE)

NOTE: Chart not to scale.

BMRNG FOUR DEPARTURE (RNAV)