

LOC/DME I-SJC <b>110.9</b> Chan <b>46</b>	APP CRS <b>306°</b>	Rwy ldg <b>7614</b>	30L <b>7597</b>	30R <b>55</b>
		TDZE <b>57</b>	<b>55</b>	
		Apt Elev <b>62</b>	<b>62</b>	

# ILS or LOC RWY 30L

NORMAN Y MINETA SAN JOSE INTL (SJC)

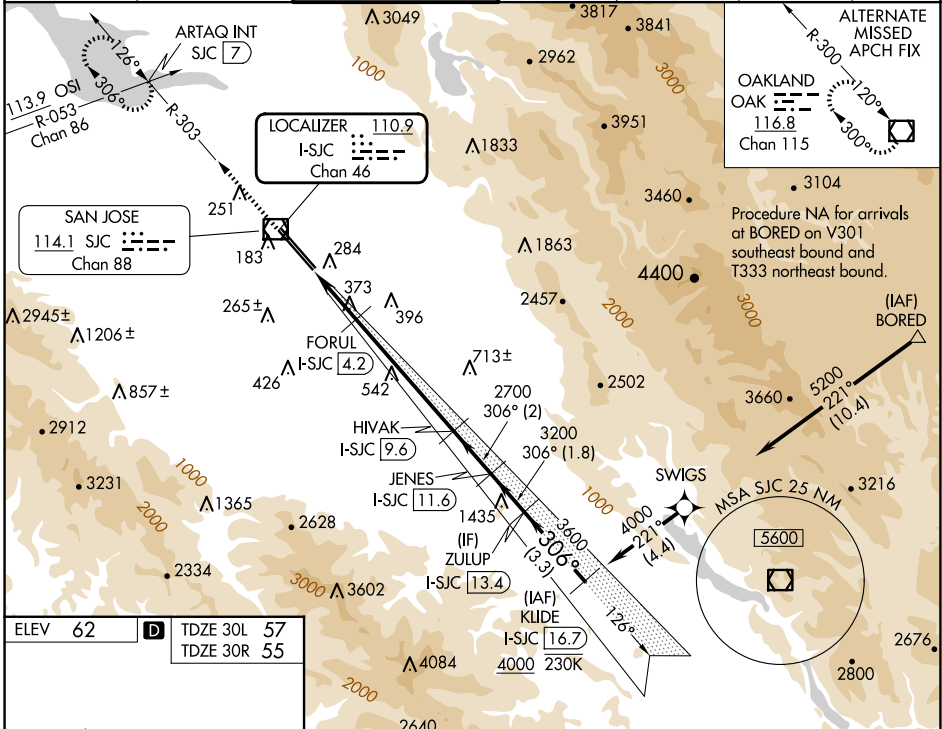
RNAV 1-GPS or RADAR required for procedure entry. DME required.  
From BORED: RNAV 1-GPS required.

MALSR Rwy 30L

MISSED APPROACH: Climb to 1900 on SJC VOR/DME R-303 to ARTAQ INT/SJC 7 DME and hold.

# RVR 1800 authorized with use of FD or AP or HUD to DA.

D-ATIS <b>126.95</b>	NORCAL APP CON <b>120.1 290.25</b>	SAN JOSE TOWER * <b>124.0 (CTAF) 257.6</b>	GND CON <b>121.7</b>	CLNC DEL <b>118.0</b>	CPDLC	UNICOM <b>122.95</b>
-------------------------	---------------------------------------	---	-------------------------	--------------------------	-------	-------------------------



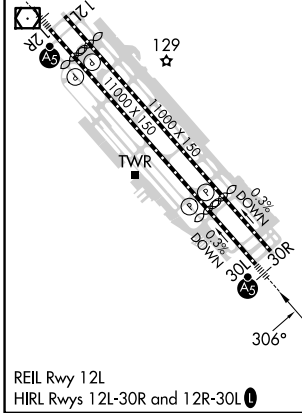
ALTERNATE MISSED APCH FIX

OAKLAND OAK  
116.8  
Chan 115

Procedure NA for arrivals at BORED on V301 southeast bound and T333 northeast bound.

(IAF) BORED

ELEV 62	TDZE 30L 57	TDZE 30R 55
---------	-------------	-------------



1900	ARTAQ INT	VGSJ and ILS glidepath not coincident (VGSJ Angle 3.00/TCH 70).			KLIDE I-SJC 16.7
SJC R-303	FORUL I-SJC 4.2	HIVAK I-SJC 9.6	JENES I-SJC 11.6	ZULUP I-SJC 13.4	4000
*LOC only	*I-SJC 3	2700	3200	3600	306°
I-SJC 1.4	1000*	2700	3200	3600	GS 3.00° TCH 54
1.6 NM	1.2 NM	5.3 NM	2 NM	1.8 NM	3.3 NM

CATEGORY	A	B	C	D
S-ILS 30L#	257/24 200 (200-1/2)			
S-LOC 30L	640/24	583 (600-1/2)	640-1 1/4	583 (600-1 1/4)
SIDESTEP 30R	640-1	585 (600-1)	640-1 3/4	585 (600-1 3/4)
			585 (600-2)	585 (600-2)

SW-2, 17 APR 2025 to 15 MAY 2025

SW-2, 17 APR 2025 to 15 MAY 2025