

APP CRS	Rwy ldg	8587
126°	TDZE	46
	Apt Elev	62

RNAV (RNP) Z RWY 12R

NORMAN Y MINETA SAN JOSE INTL (SJC)

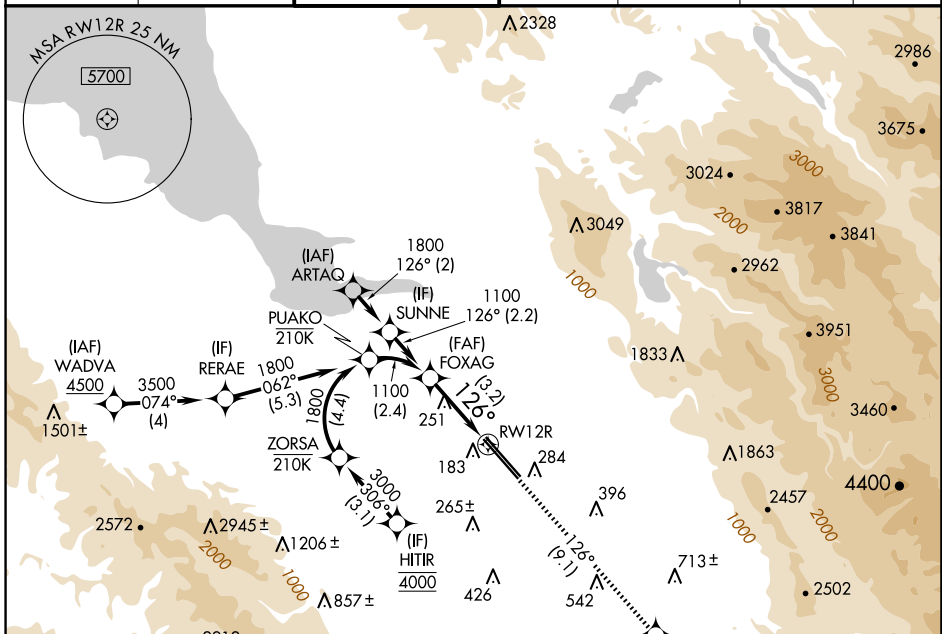
RNP AR APCH-GPS.

▼ For uncompensated Baro-VNAV systems, procedure NA below 0°C or above 54°C. For inop ALS, increase RNP 0.15 all Cats visibility to RVR 5500.



MISSED APPROACH: Climb to 4600 on track 126° to HOSBO and track 124° to GILRO and hold.

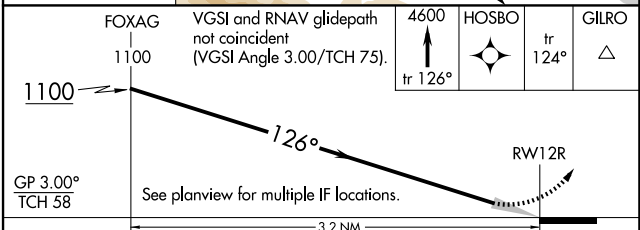
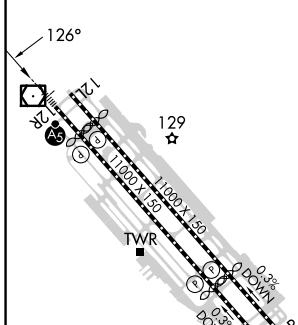
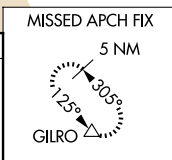
D-ATIS 126.95	NORCAL APP CON 120.1 290.25	SAN JOSE TOWER* 124.0 (CTAF) 257.6	GND CON 121.7	CLNC DEL 118.0	CPDLC	UNICOM 122.95
-------------------------	---------------------------------------	--	-------------------------	--------------------------	-------	-------------------------



SW-2, 17 APR 2025 to 15 MAY 2025

SW-2, 17 APR 2025 to 15 MAY 2025

ELEV	62	D	TDZE	46
------	-----------	----------	------	-----------



GP 3.00° TCH 58	See planview for multiple IF locations.			
CATEGORY	A	B	C	D
RNP 0.15 DA		394/30	348 (400- ³ / ₄)	
RNP 0.30 DA		486/40	440 (500- ³ / ₄)	

REIL Rwy 12L
HIRL Rws 12L-30R and 12R-30L

AUTHORIZATION REQUIRED