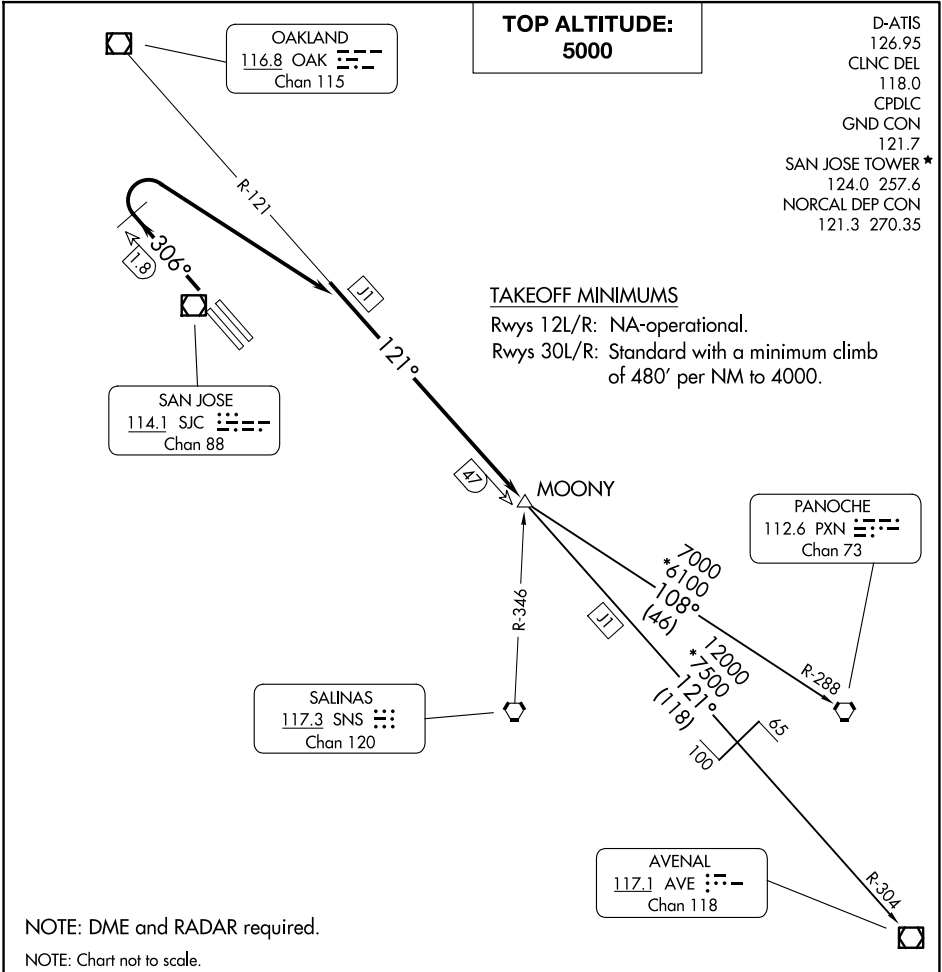


(SJC3.MOONY) 23334

# SAN JOSE THREE DEPARTURE

AL-693 (FAA)

NORMAN Y MINETA SAN JOSE INTL (SJC)  
SAN JOSE, CALIFORNIA



NOTE: DME and RADAR required.

NOTE: Chart not to scale.

## DEPARTURE ROUTE DESCRIPTION

TAKEOFF RUNWAYS 30L/R: Climb heading 306° to SJC 1.8 DME NW of SJC VOR/DME, then turn right to intercept and proceed on OAK R-121 to MOONY INT, thence. . . .

. . . .on (transition) or (assigned route). Maintain 5000, expect clearance to filed altitude ten minutes after departure.

AVENAL TRANSITION (SJC3.AVE): From over MOONY INT on OAK R-121 and AVE R-304 to AVE VOR/DME.

PANOCHÉ TRANSITION (SJC3.PXN): From over MOONY INT on PXN R-288 to PXN VORTAC.

# SAN JOSE THREE DEPARTURE

(SJC3.MOONY) 15AUG19

SAN JOSE, CALIFORNIA  
NORMAN Y MINETA SAN JOSE INTL (SJC)

SW-2, 17 APR 2025 to 15 MAY 2025

SW-2, 17 APR 2025 to 15 MAY 2025