

VORTAC CMI 115.75 Chan 104 (Y)	APP CRS 207°	Rwy ldg TDZE Apt Elev	6502 750 755
---	------------------------	-----------------------------	---

VOR RWY 22

UNIVERSITY OF ILLINOIS/WILLARD (CMI)

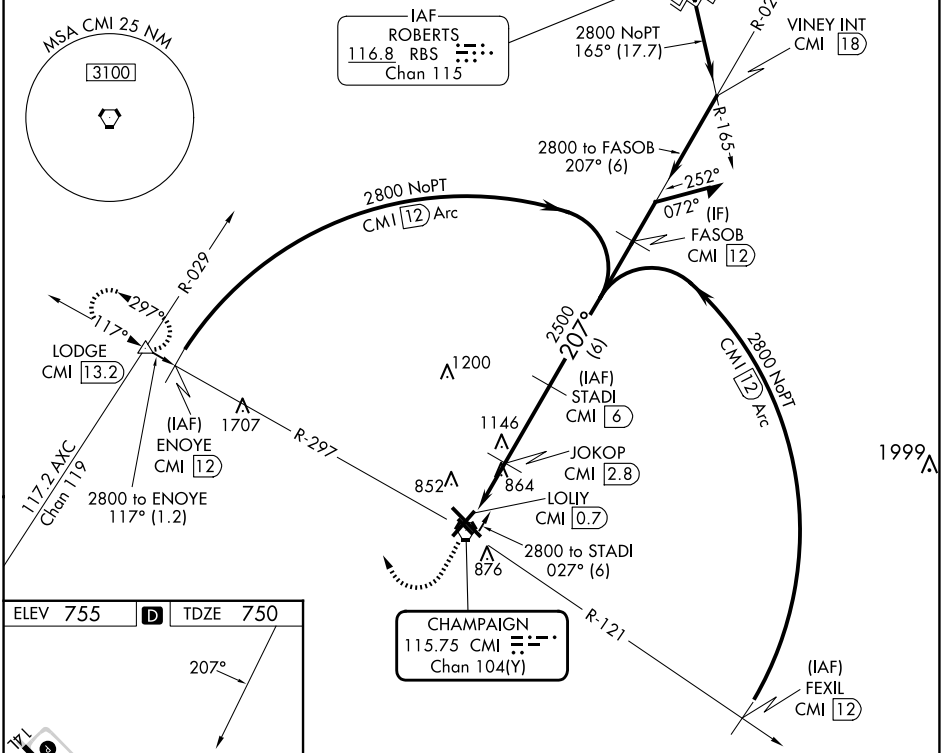
DME required.

ASR Rwy 22 helicopter visibility reduction below 3/4 SM NA.

MISSED APPROACH: Climb to 2800 then right turn on heading 340° and on CMI VORTAC R-297 to LODGE INT/CMI 13.2 DME and hold.

ATIS 124.85	CHAMPAIGN APP CON * 121.35 285.65 (319°-138°) 132.85 290.225 (139°-318°)	CHAMPAIGN TOWER * 120.4 (CTAF) 229.4	GND CON 121.8	CLNC DEL 128.75	UNICOM 122.95
-----------------------	--	--	-------------------------	---------------------------	-------------------------

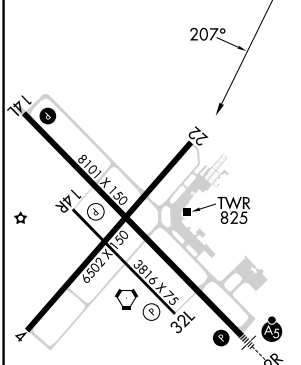
Procedure NA for arrivals at RBS VOR/DME on V191 northeast bound.



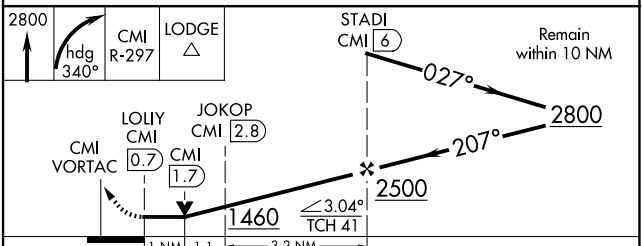
EC-3, 17 APR 2025 to 15 MAY 2025

EC-3, 17 APR 2025 to 15 MAY 2025

ELEV 755	D	TDZE 750
----------	----------	----------



- HIRL Rwy 14L-32R
- MIRL Rwy 4-22
- MIRL Rwy 14R-32L



CATEGORY	A	B	C	D
S-22	1120-1	370 (400-1)		1120-1¼ 370 (400-1¼)
C CIRCLING	1240-1	485 (500-1)	1500-2¼ 745 (800-2¼)	1500-2½ 745 (800-2½)