

# RNAV (GPS) RWY 6 DECATUR (DEC)

WAAS CH <b>86207</b> <b>W06A</b>	APP CRS <b>060°</b>	Rwy Idg <b>8496</b> TDZE <b>677</b> Apt Elev <b>682</b>
--	------------------------	---

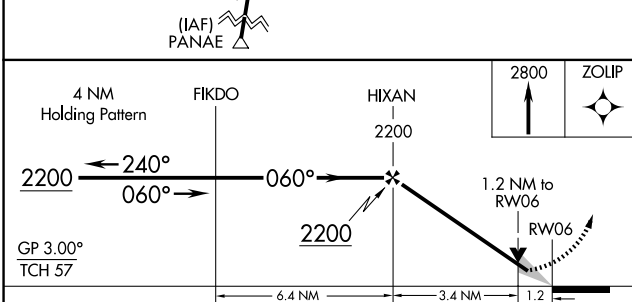
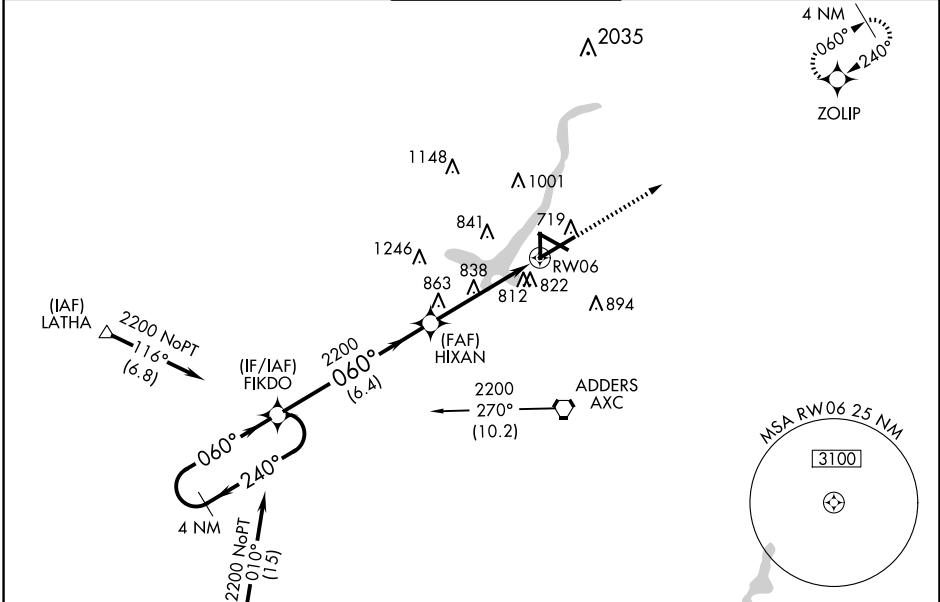
RNP APCH - GPS.

**▼** For inoperative MALS, increase LPV all Cats visibility to RVR 5000 and LNAV Cat D visibility to RVR 6000. For uncompensated Baro-VNAV systems, LNAV/VNAV NA below -16°C or above 47°C. Baro-VNAV and VDP NA when using Logan County altimeter setting. When local altimeter setting not received, use Logan County altimeter setting and increase all DA/MDA 80 feet, increase all Cats LPV and LNAV/VNAV visibility ¼ mile. Increase LNAV Cat C and Circling Cats C/D visibility ¼ mile. For inoperative MALS when using Logan County altimeter setting increase LPV visibility to 1¼ mile. Circling to Rwy 12 NA at night.

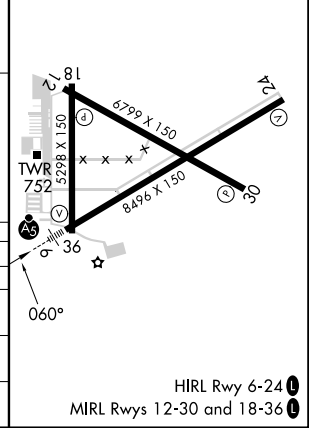


**MISSED APPROACH:**  
Climb to 2800 direct ZOLIP and hold.

ATIS <b>126.35</b>	CHAMPAIGN APP CON* <b>132.85 290.225</b>	DECATUR TOWER* <b>118.9(CTAF) 291.775</b>	GND CON <b>121.75 291.775</b>	UNICOM <b>122.95</b>
-----------------------	---	--	----------------------------------	-------------------------



ELEV 682	<b>D</b> TDZE 677
----------	-------------------



CATEGORY	A	B	C	D
LPV DA	951/24 274 (300-½)			
LNAV/VNAV DA	1101/50 424 (500-1)			
LNAV MDA	1100/24	423 (500-½)	1100/40 423 (500-¾)	1100/50 423 (500-1)
<b>C</b> CIRCLING	1200-1 518 (600-1)	1240-1 558 (600-1)	1360-2 678 (700-2)	1360-2¼ 678 (700-2¼)

HIRL Rwy 6-24 **①**  
MIRL Rws 12-30 and 18-36 **②**

EC-3, 17 APR 2025 to 15 MAY 2025

EC-3, 17 APR 2025 to 15 MAY 2025