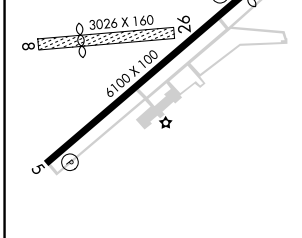
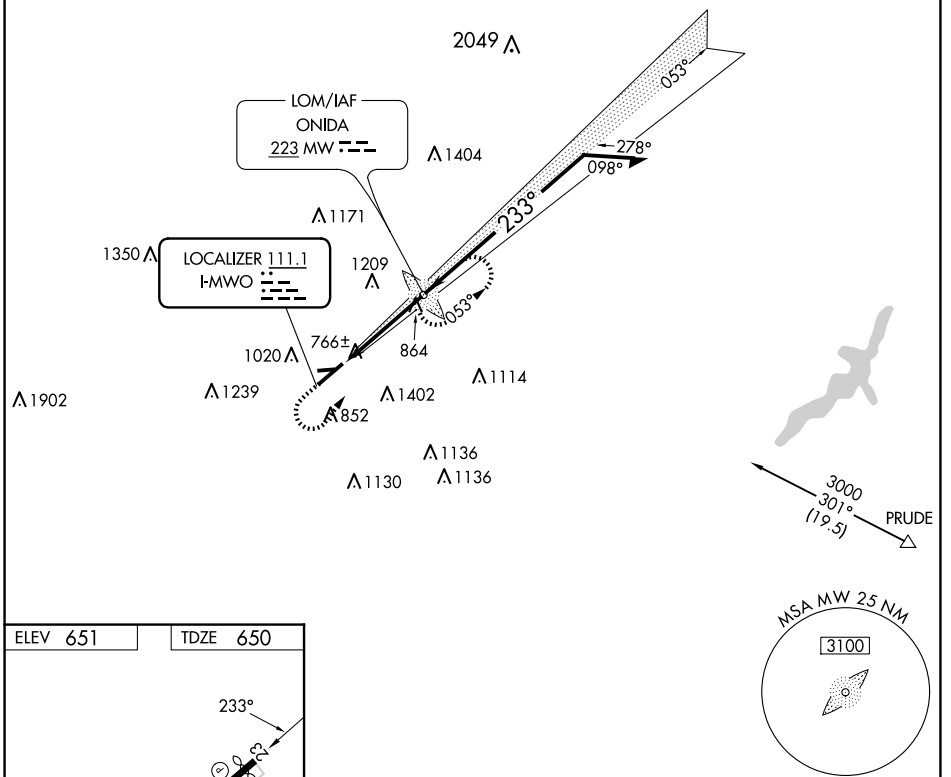


| | | |
|---------------------------|------------------------|-----------------|
| LOC I-MWO 111.1 | APP CRS 233° | Rwy Idg 5801 |
| | | TDZE 650 |
| | | Apt Elev 651 |

LOC RWY 23

MIDDLETOWN RGNL/HOOK FLD (MWO)

| | | |
|--|---|---|
| ADF required. | | <p>MISSED APPROACH: Climb to 2600 then climbing left turn to 3000 direct MW LOM and hold.</p> |
| <p>▼ Circling Rwy 5 NA at night. Circling NA to Rwys 8 and 26. Rwy 23 helicopter visibility reduction below ¼ SM NA. When local altimeter setting not received, use Dayton/Wright Brothers altimeter setting and increase all MDAs 80 feet and S-23 Cat C/D visibility ¼ SM.</p> | | |
| AWOS-3PT 120.025 | COLUMBUS APP CON 118.85 269.275 | UNICOM 123.0 (CTAF) |

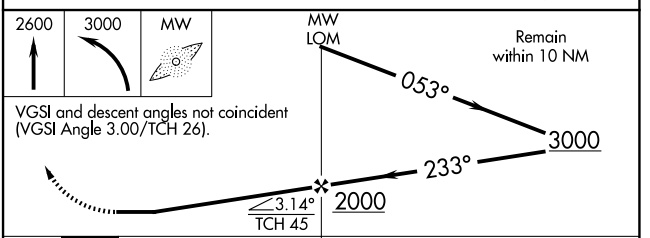


ELEV 651 TDZE 650

MIRL Rwy 5-23
REL Rwys 5 and 23

FAF to MAP 3.9 NM

| | | | | | |
|---------|------|------|------|------|------|
| Knots | 60 | 90 | 120 | 150 | 180 |
| Min:Sec | 3:54 | 2:36 | 1:57 | 1:34 | 1:18 |



| CATEGORY | A | B | C | D |
|----------|---------|--------------|-------------------------|-------------------------|
| S-23 | 1140-1 | 490 (500-1) | 1140-1⅜ 490 (500-1⅜) | 1140-1½ 490 (500-1½) |
| CIRCLING | 1480-1¼ | 829 (900-1¼) | 1720-3 1069 (1100-3) | 1940-3 1289 (1300-3) |

LOC RWY 23

EC-2, 17 APR 2025 to 15 MAY 2025

EC-2, 17 APR 2025 to 15 MAY 2025