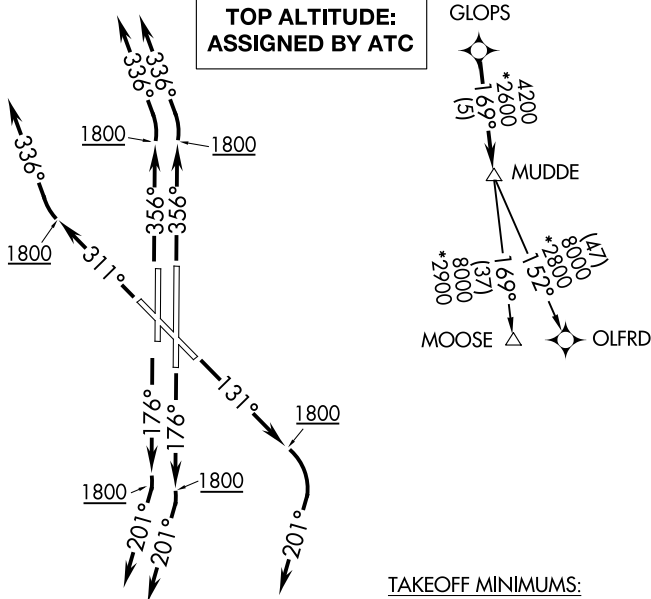


MUDDE THREE DEPARTURE (RNAV)

**TOP ALTITUDE:
ASSIGNED BY ATC**

ATIS
128.725
GND CON
121.7
WILEY POST TOWER★
126.9 306.9
OKE CITY DEP CON
124.6 266.8



TAKEOFF MINIMUMS:

Rwy 13, 17L/R, 31, 35L/R:
Standard with minimum climb of 500' per NM to 2100.

NOTE: RADAR required.
NOTE: DME/DME/IRU or GPS required.
NOTE: RNAV 1.

NOTE: Chart not to scale.



DEPARTURE ROUTE DESCRIPTION

TAKEOFF RWY 13: Climb heading 131° to 1800, then right turn heading 201° or as assigned by ATC, expect RADAR vectors to GLOPS, thence

TAKEOFF RWYS 17L/R: Climb on heading 176° to 1800, then right turn heading 201° or as assigned by ATC, expect RADAR vectors to GLOPS, thence

TAKEOFF RWY 31: Climb on heading 311° to 1800, then right turn heading 336° or as assigned by ATC, expect RADAR vectors to GLOPS, thence

TAKEOFF RWY 35L/R: Climb on heading 356° to 1800, then left turn heading 336° or as assigned by ATC, expect RADAR vectors to GLOPS, thence

. . . . on track 169° to MUDD, then on (transition). Maintain 3000 or as assigned by ATC. Expect filed altitude 10 minutes after departure.

MOOSE TRANSITION (MUDDE3.MOOSE):
OLFRD TRANSITION (MUDDE3.OLFRD):