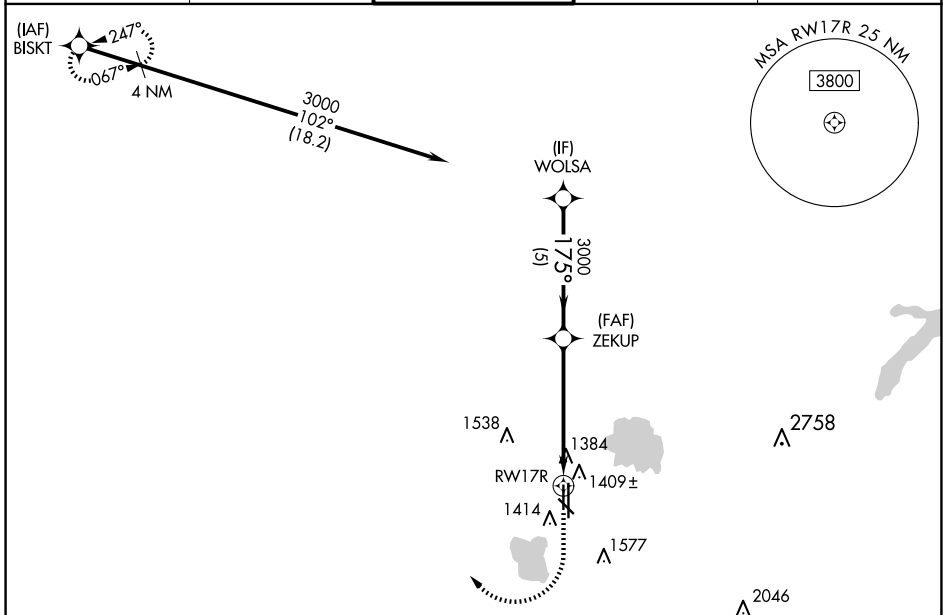


APP CRS	Rwy Idg	5002
175°	TDZE	1283
	Apt Elev	1300

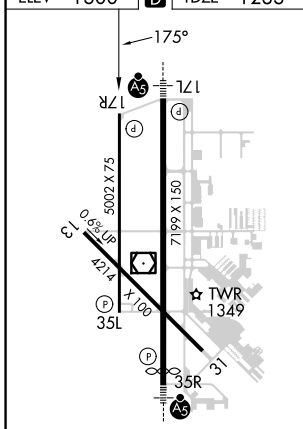
RNAV (GPS) RWY 17R

WILEY POST (PWA)

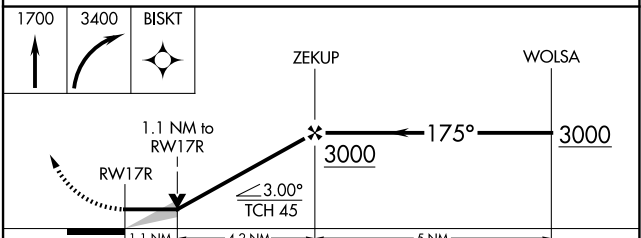
RNP APCH-GPS.		MISSED APPROACH: Climb to 1700 then climbing right turn to 3400 direct BISKT and hold.		
ATIS	OKE CITY APP CON	WILEY POST TOWER ★	GND CON	UNICOM
128.725	124.6 266.8	126.9 (CTAF) 306.9	121.7	122.95



ELEV 1300	D	TDZE 1283
-----------	----------	-----------



REIL Rwy 17R and 35L
 HIRL Rwy 17L-35R
 MIRL Rwy 13-31 and 17R-35L



CATEGORY	A	B	C	D
INAV MDA	1660-1 377 (400-1)			
C CIRCLING	1780-1	480 (500-1)	1880-1½ 580 (600-1½)	1880-2 580 (600-2)

SC-1, 17 APR 2025 to 15 MAY 2025

SC-1, 17 APR 2025 to 15 MAY 2025