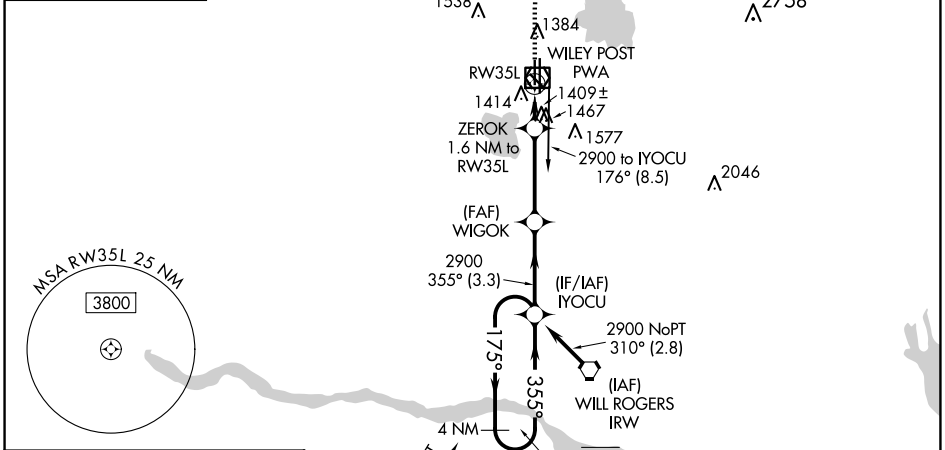
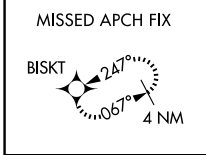


WAAS CH 78437 W35B	APP CRS 355°	Rwy Idg TDZE 1277 Apt Elev 1300
--	------------------------	---

RNAV (GPS) RWY 35L

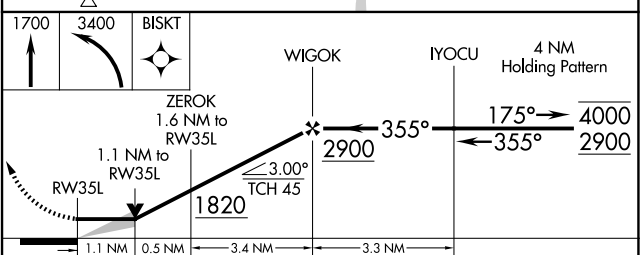
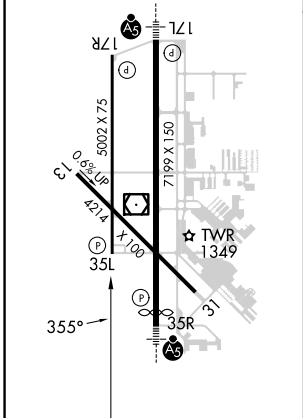
WILEY POST (PWA)

RNP APCH-GPS.		MISSED APPROACH: Climb to 1700 then climbing left turn to 3400 direct BISKI and hold.		
ATIS 128.725	OKE CITY APP CON 124.6 266.8	WILEY POST TOWER ★ 126.9(CTAF) 306.9	GND CON 121.7	UNICOM 122.95



ELEV 1300	D	TDZE 1277
-----------	---	-----------

REIL Rwy 17R and 35L
HIRL Rwy 17L-35R
MIRL Rwy 13-31 and 17R-35L



CATEGORY	A	B	C	D
LP MDA	1660-1	383 (400-1)	1660-1½	383 (400-1½)
LNAV MDA	1720-1	443 (500-1)	1720-1¾	443 (500-1¾)
CIRCLING	1780-1	480 (500-1)	1880-1½ 580 (600-1½)	1880-2 580 (600-2)

SC-1, 17 APR 2025 to 15 MAY 2025

SC-1, 17 APR 2025 to 15 MAY 2025