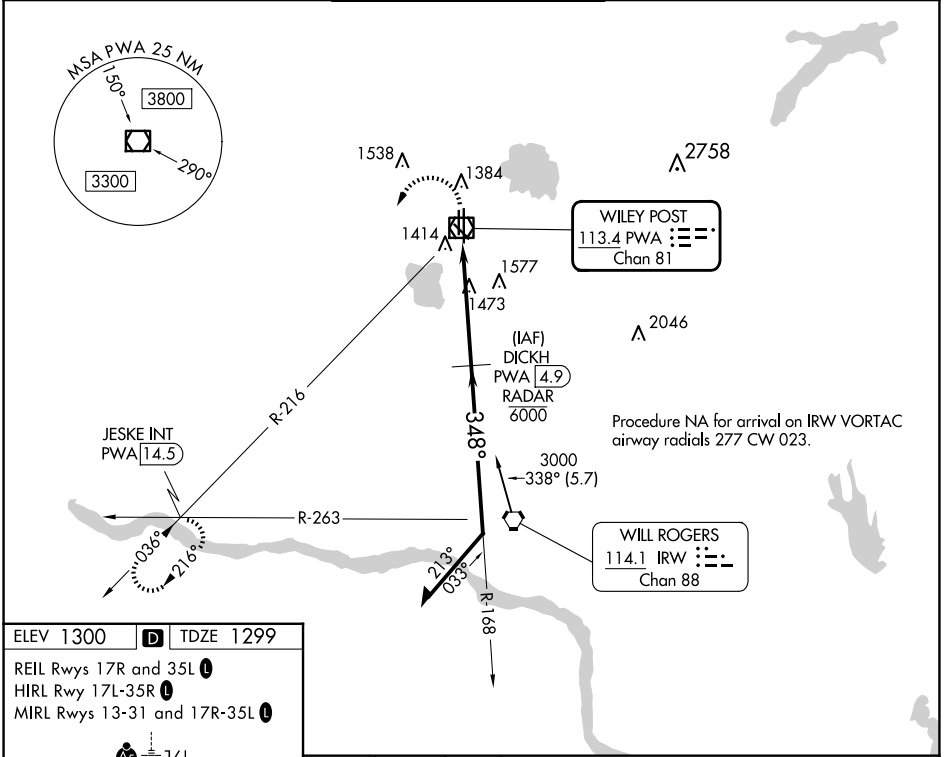


VOR/DME PWA <b>113.4</b> Chan <b>81</b>	APP CRS <b>348°</b>	Rwy Idg TDZE Apt Elev	<b>6843</b> <b>1299</b> <b>1300</b>
---	------------------------	-----------------------------	---

# VOR RWY 35R

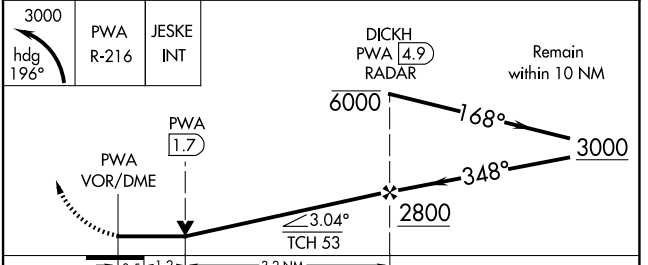
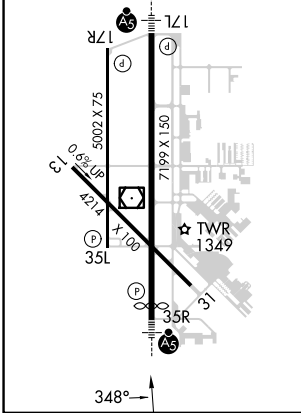
WILEY POST (PWA)

DME or RADAR required.		MALSRS 	MISSED APPROACH: Climbing left turn to 3000 on heading 196° and PWA R-216 to JESKE INT/PWA 14.5 DME and hold.	
ATIS <b>128.725</b>	OKE CITY APP CON <b>124.6 266.8</b>	WILEY POST TOWER ★ <b>126.9 (CTAF) 306.9</b>	GND CON <b>121.7</b>	UNICOM <b>122.95</b>



ELEV 1300 **D** TDZE 1299

REIL Rws 17R and 35L  
HIRL Rwy 17L-35R  
MIRL Rws 13-31 and 17R-35L



CATEGORY	A	B	C	D
S-35R	1740-1/2	441 (500-1/2)	1740-7/8	441 (500-7/8)
<b>C</b> CIRCLING	1780-1	480 (500-1)	1880-1 1/2 580 (600-1 1/2)	1880-2 580 (600-2)

SC-1, 17 APR 2025 to 15 MAY 2025

SC-1, 17 APR 2025 to 15 MAY 2025