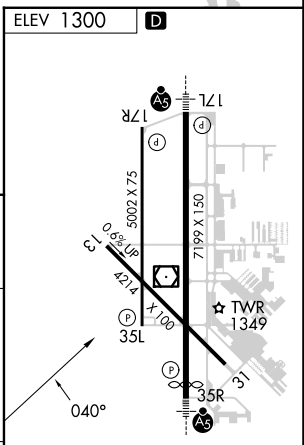
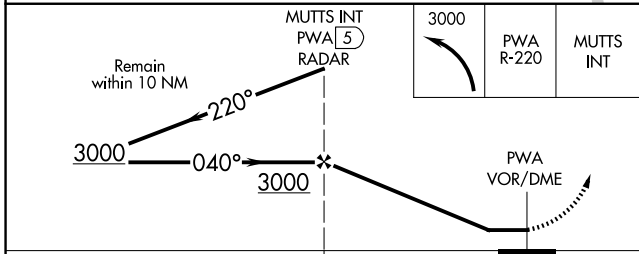
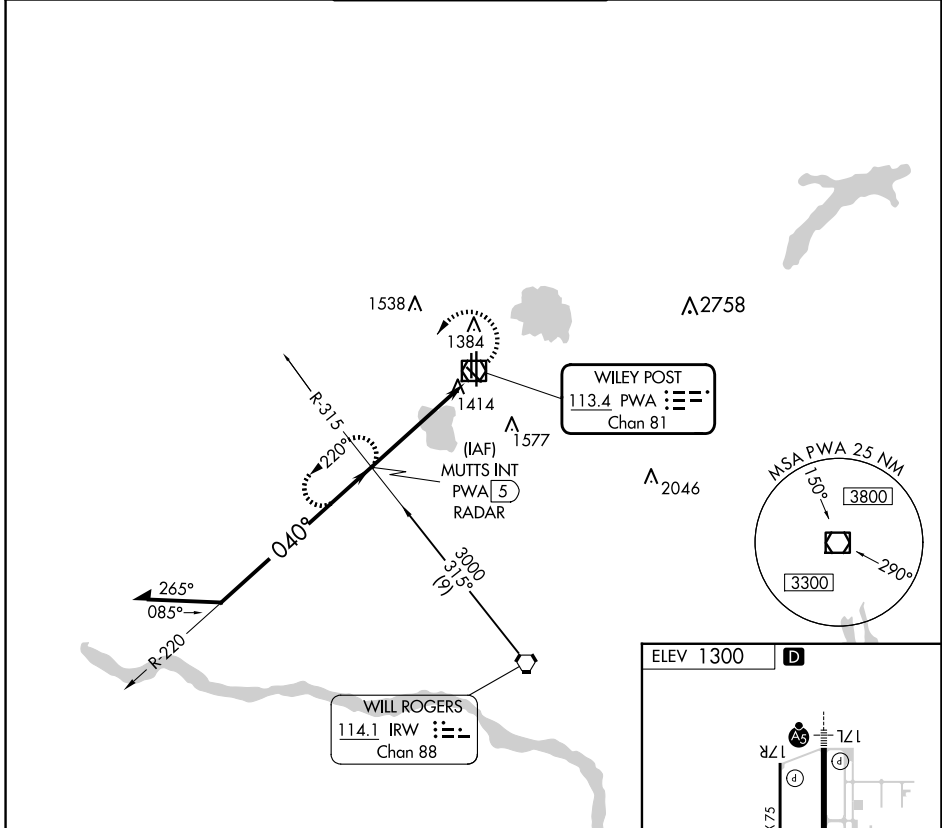


VOR/DME PWA <b>113.4</b> Chan <b>81</b>	APP CRS <b>040°</b>	Rwy Idg TDZE Apt Elev <b>N/A</b> <b>N/A</b> <b>1300</b>
---	------------------------	---

**VOR-A**  
WILEY POST (PWA)

ASR		MISSED APPROACH: Climbing left turn to 3000 via PWA VOR/DME R-220 to MUTTS Int and hold.		
ATIS <b>128.725</b>	OKE CITY APP CON <b>124.6 266.8</b>	WILEY POST TOWER ★ <b>126.9</b> (CTAF) <b>306.9</b>	GND CON <b>121.7</b>	UNICOM <b>122.95</b>



CATEGORY	A	B	C	D
<b>C</b> CIRCLING	1780-1	480 (500-1)	1880-1½ 580 (600-1½)	1880-2 580 (600-2)

REIL Rwy 17R and 35L **Ⓛ**  
HIRL Rwy 17L-35R **Ⓛ**  
MIRL Rwy 13-31 and 17R-35L **Ⓛ**

SC-1, 17 APR 2025 to 15 MAY 2025

SC-1, 17 APR 2025 to 15 MAY 2025