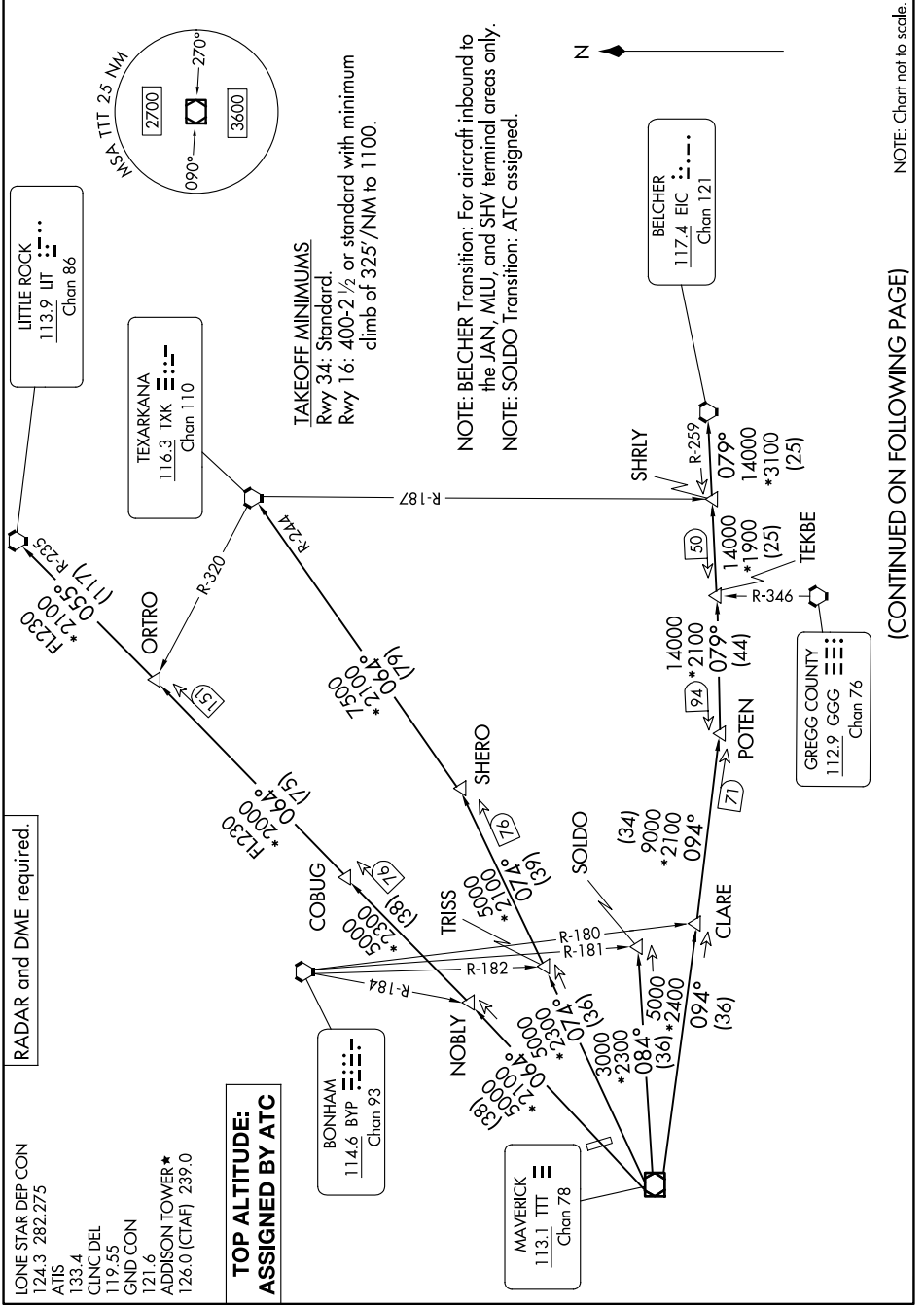


# DALLAS THREE DEPARTURE

DALLAS, TEXAS

SC-2, 17 APR 2025 to 15 MAY 2025



NOTE: Chart not to scale.

(CONTINUED ON FOLLOWING PAGE)

SC-2, 17 APR 2025 to 15 MAY 2025

# DALLAS THREE DEPARTURE

DALLAS, TEXAS

ADDISON (ADS)

RADAR and DME required.

LONE STAR DEP CON  
124.3 282.275  
ATIS  
133.4  
CLNC DEL  
119.55  
GND CON  
121.6  
ADDISON TOWER\*  
126.0 (CTAF) 239.0

**TOP ALTITUDE:  
ASSIGNED BY ATC**

**TAKEOFF MINIMUMS**  
Rwy 34: Standard  
Rwy 16: 400-2 1/2 or standard with minimum  
climb of 325'/NM to 1100.

NOTE: BELCHER Transition: For aircraft inbound to  
the JAN, MIU, and SHV terminal areas only.  
NOTE: SOLDI Transition: ATC assigned.