

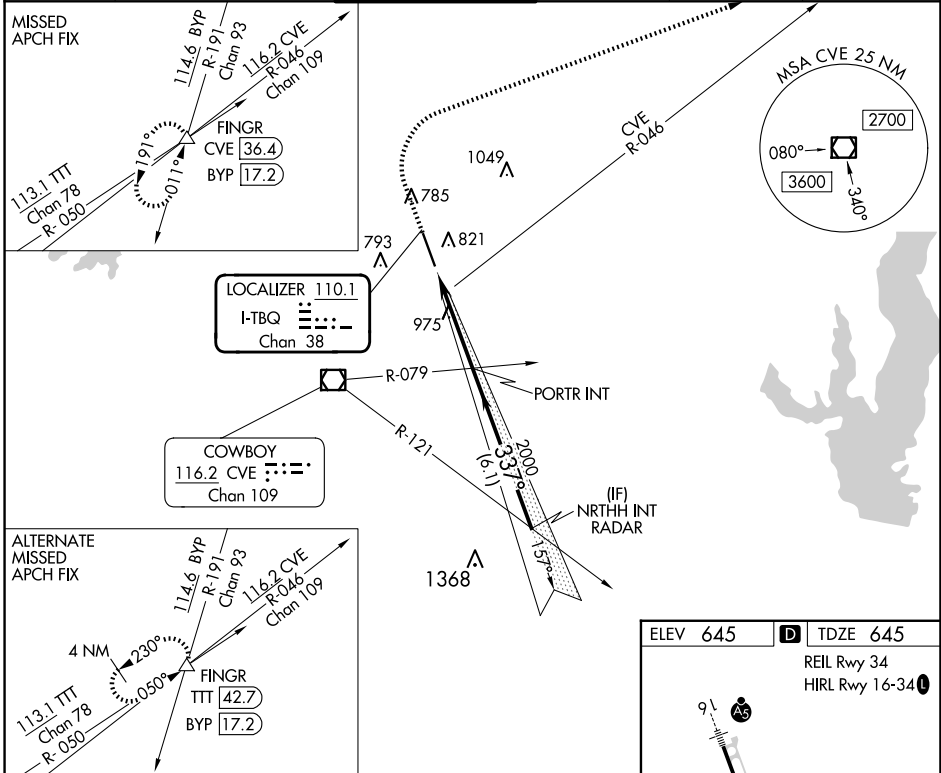
LOC/DME I-TBQ 110.1 Chan 38	APP CRS 337°	Rwy Idg 6431 TDZE 645 Apt Elev 645
---	------------------------	---

ILS or LOC RWY 34

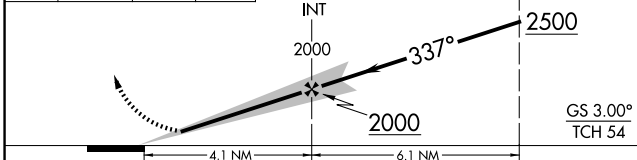
ADDISON (ADS)

DME Required. RADAR required for procedure entry.		MISSED APPROACH: Climb to 1500 then climbing right turn to 5000 on heading 067° and CVE VOR/DME R-046 to FINGR/CVE 36.4 DME and hold.			
Rwy 34 helicopter visibility reduction below 3/4 SM NA.					

ATIS 133.4	LONE STAR APP CON 124.3 282.275	ADDISON TOWER * 126.0 (CTAF) 239.0	GND CON 121.6	CLNC DEL 119.55	UNICOM 122.95
----------------------	---	--	-------------------------	---------------------------	-------------------------



1500	5000	CVE R-046	FINGR	VGSI and ILS glidepath not coincident (VGSI Angle 3.00/TCH 60).	NRTTH INT RADAR



CATEGORY	A	B	C	D
S-ILS 34	895-3/4 250 (300-3/4)			
S-LOC 34	1240-1 595 (600-1)		1240-1 3/4 595 (600-1 3/4)	

ELEV 645		TDZE 645
REIL Rwy 34		
HIRL Rwy 16-34		

FAF to MAP 4.1 NM					
Knots	60	90	120	150	180
Min:Sec	4:06	2:44	2:03	1:38	1:22

SC-2, 17 APR 2025 to 15 MAY 2025

SC-2, 17 APR 2025 to 15 MAY 2025