

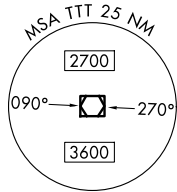
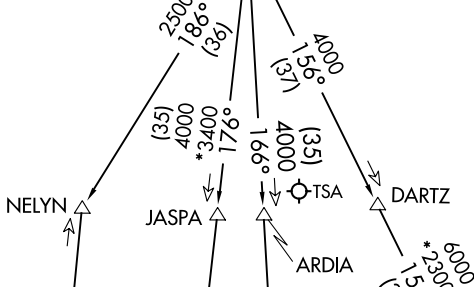
JOE POOL SEVEN DEPARTURE

LONE STAR DEP CON
124.3 282.275
ATIS
133.4
CLNC DEL
119.55
GND CON
121.6
ADDISON TOWER*
126.0 (CTAF) 239.0

RADAR and DME required.

**TOP ALTITUDE:
ASSIGNED BY ATC**

MAVERICK
113.1 TTT
Chan 78



WACO
115.3 ACT
Chan 100

LEONA
110.8 LOA
Chan 45

COLLEGE STATION
113.3 CLL
Chan 80

TAKEOFF MINIMUMS
Rwy 34: Standard.
Rwy 16: 400-2½ or standard with minimum
climb of 325'/NM to 1100.

CENTEX
112.8 CWK
Chan 75

SAN ANTONIO
116.8 SAT
Chan 115

NAVASOTA
115.9 TNV
Chan 106

(CONTINUED ON FOLLOWING PAGE)

NOTE: Chart not to scale.

SC-2, 17 APR 2025 to 15 MAY 2025

SC-2, 17 APR 2025 to 15 MAY 2025

JOE POOL SEVEN DEPARTURE