

# KINGDOM FIVE DEPARTURE

SC-2, 17 APR 2025 to 15 MAY 2025

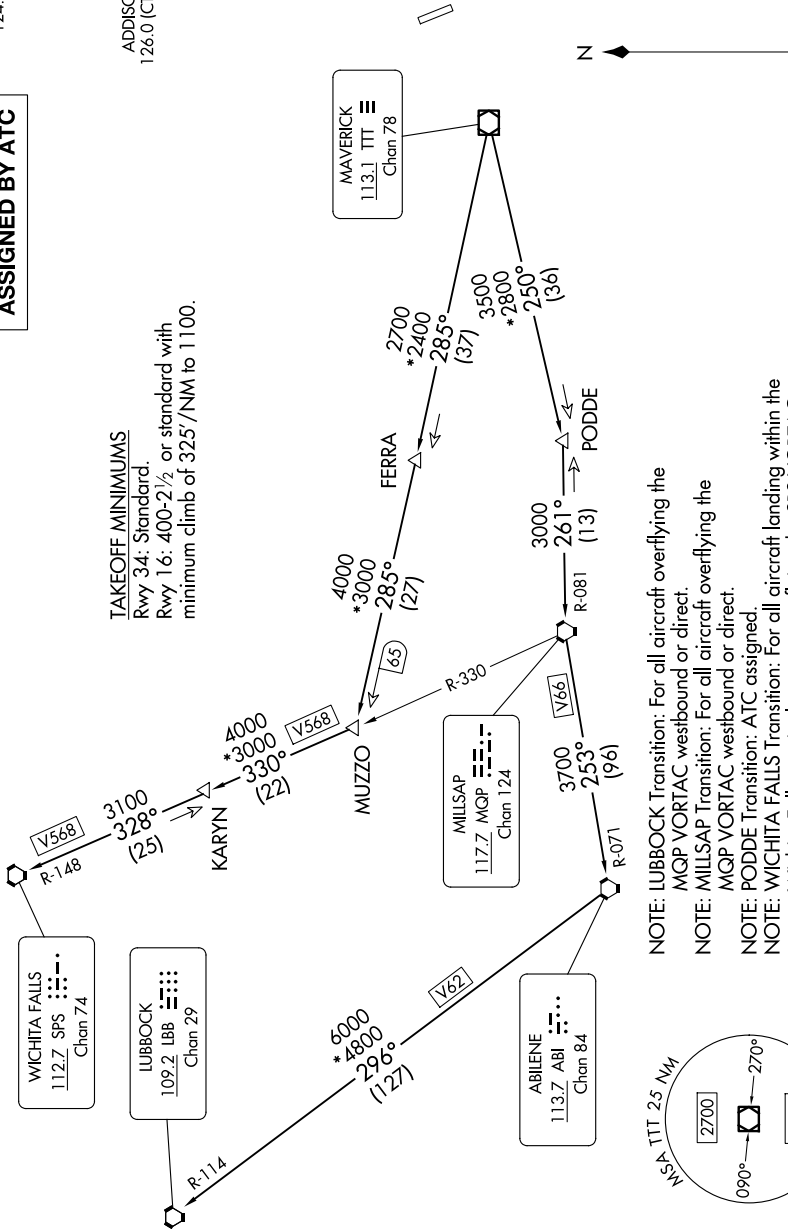
RADAR and DME required.

**TOP ALTITUDE:  
ASSIGNED BY ATC**

LONE STAR DEP CON  
124.3 282.275  
ATIS  
133.4  
CLNC DEL  
119.55  
GND CON  
121.6  
ADDISON TOWER \*  
126.0 (CTAF) 239.0

**TAKEOFF MINIMUMS**

Rwy 34: Standard.  
Rwy 16: 400-2½ or standard with  
minimum climb of 325'/NM to 1100.



- NOTE: LUBBOCK Transition: For all aircraft overlying the MQP VORTAC westbound or direct.
- NOTE: MILLSAP Transition: For all aircraft overlying the MQP VORTAC westbound or direct.
- NOTE: PODDE Transition: ATC assigned.
- NOTE: WICHITA FALLS Transition: For all aircraft landing within the Wichita Falls terminal area or overlying the SPS VORTAC.
- NOTE: For all aircraft requesting 17000 and below.

NOTE: Chart not to scale.

(CONTINUED ON FOLLOWING PAGE)

# KINGDOM FIVE DEPARTURE

SC-2, 17 APR 2025 to 15 MAY 2025