

KUSSO ONE DEPARTURE (RNAV)

SC-2, 17 APR 2025 to 15 MAY 2025

**TOP ALTITUDE:
ASSIGNED BY ATC**

TAKEOFF MINIMUMS

Rwy 16: 400-2½ or standard with a minimum
climb of 325' per NM to 1100.

Rwy 34: Standard.

LONE STAR DEP CON
124.3 282.275
ATIS
133.4
CLINC DEL
119.55
GNDCON
121.6

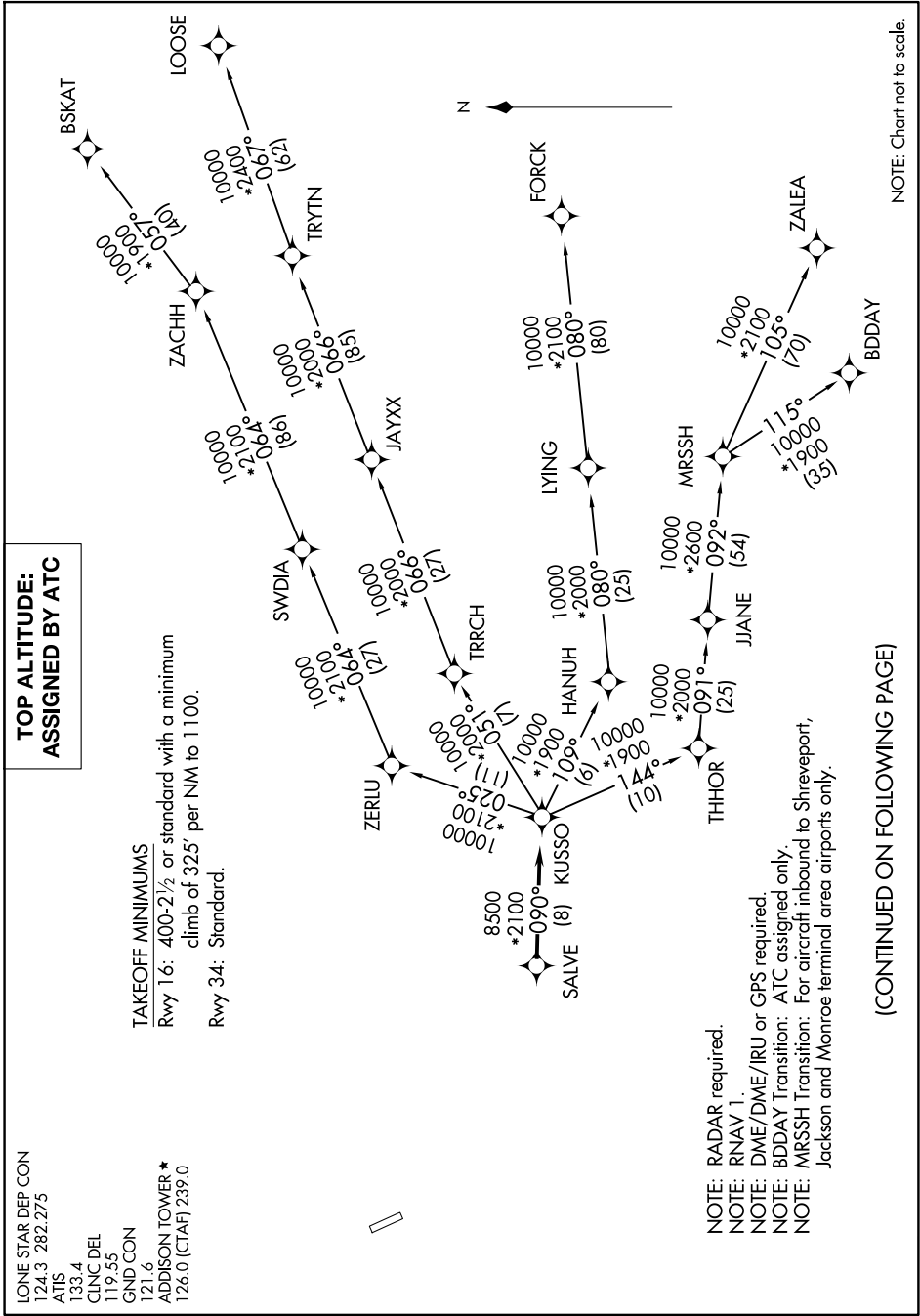
ADDISON TOWER ★
126.0 (CTAF) 239.0

NOTE: RADAR required.
NOTE: RNAV 1.
NOTE: DME/DME/IRU or GPS required.
NOTE: BDDAY Transition: ATC assigned only.
NOTE: MRSSH Transition: For aircraft inbound to Shreveport,
Jackson and Monroe terminal area airports only.

KUSSO ONE DEPARTURE (RNAV)

(KUSSO1.KUSSO) 24MAR22

DALLAS, TEXAS
ADDISON (ADS)



(CONTINUED ON FOLLOWING PAGE)

NOTE: Chart not to scale.

SC-2, 17 APR 2025 to 15 MAY 2025