

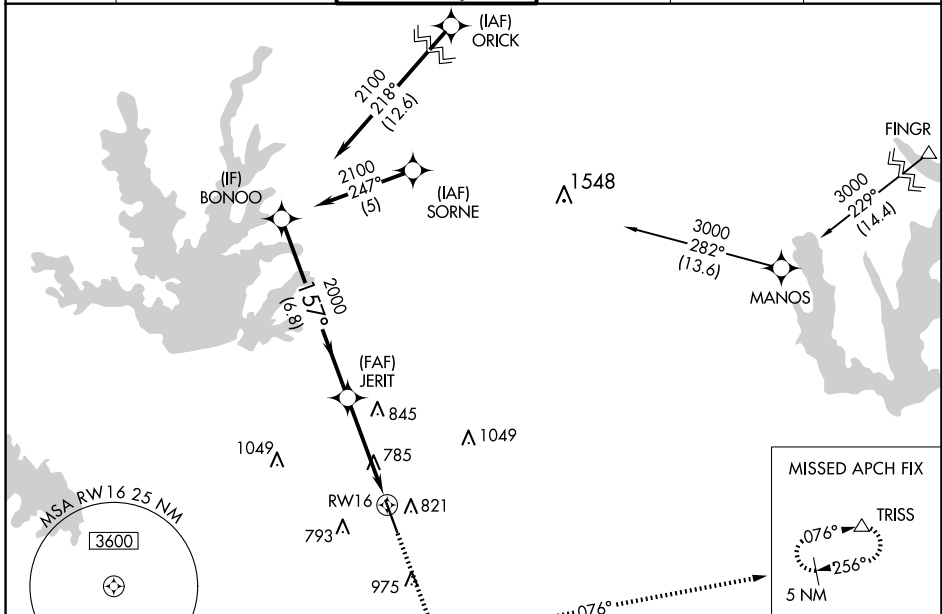
WAAS CH 82202 W16A	APP CRS 157°	Rwy ldg 6224 TDZE 644 Apt Elev 645
---------------------------------	------------------------	---

RNAV (GPS) RWY 16

ADDISON (ADS)

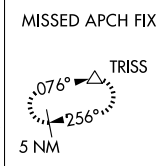
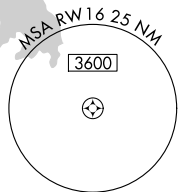
RNP APCH-GPS. ⚠ For uncompensated Baro-VNAV systems, LNAV/VNAV NA below -16°C or above 54°C. Rwy 16 helicopter visibility reduction below 1 SM NA. Inop table does not apply to LPV all Cats, and LNAV Cats A/B. For inop ALS, increase LNAV/VNAV all Cats visibility to 1¼ SM, and LNAV Cats C/D to 1½ SM.	MALSR 	MISSED APPROACH: Climb to 3000 direct VEYXE and on track 076° to TRISS and hold.
--	-----------	--

ATIS 133.4	LONE STAR APP CON 124.3 282.275	ADDISON TOWER ★ 126.0 (CTAF) 0 239.0	GND CON 121.6	CLNC DEL 119.55	UNICOM 122.95
----------------------	---	--	-------------------------	---------------------------	-------------------------

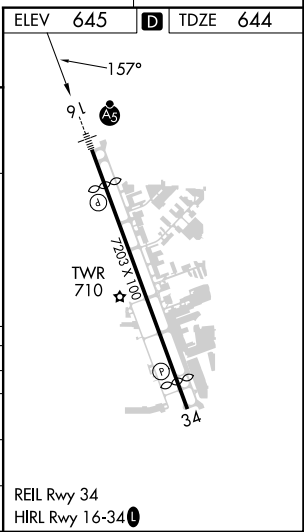
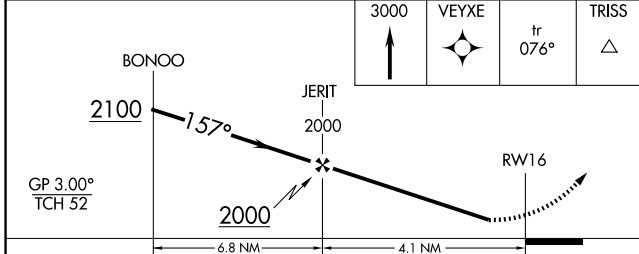


SC-2, 17 APR 2025 to 15 MAY 2025

SC-2, 17 APR 2025 to 15 MAY 2025



ELEV 645	D TDZE 644
-----------------	--------------------------



CATEGORY	A	B	C	D
LPV DA		944-1	300 (300-1)	
LNAV/VNAV DA		1077-1	433 (500-1)	
LNAV MDA		1100-1	456 (500-1)	
C CIRCLING	1200-1	555 (600-1)	1280-1¼ 635 (700-1¾)	1400-2½ 755 (800-2½)