

MARYSVILLE, CALIFORNIA

HI-ILS or LOC Z RWY 33

LOC I-MIZ 109.5	APCH CRS 325°	Rwy ldg 12,001	TDZE 105
		Arprt Elev 113	

(USAF)

BEALE AFB (KBAB)

RADAR or DME required

▲ * When ALS inop, increase CAT CDE RVR to 40 and vis to 3/4 mile.
 ** When ALS inop, increase CAT CDE RVR to 60 vis to 1 1/8 miles.

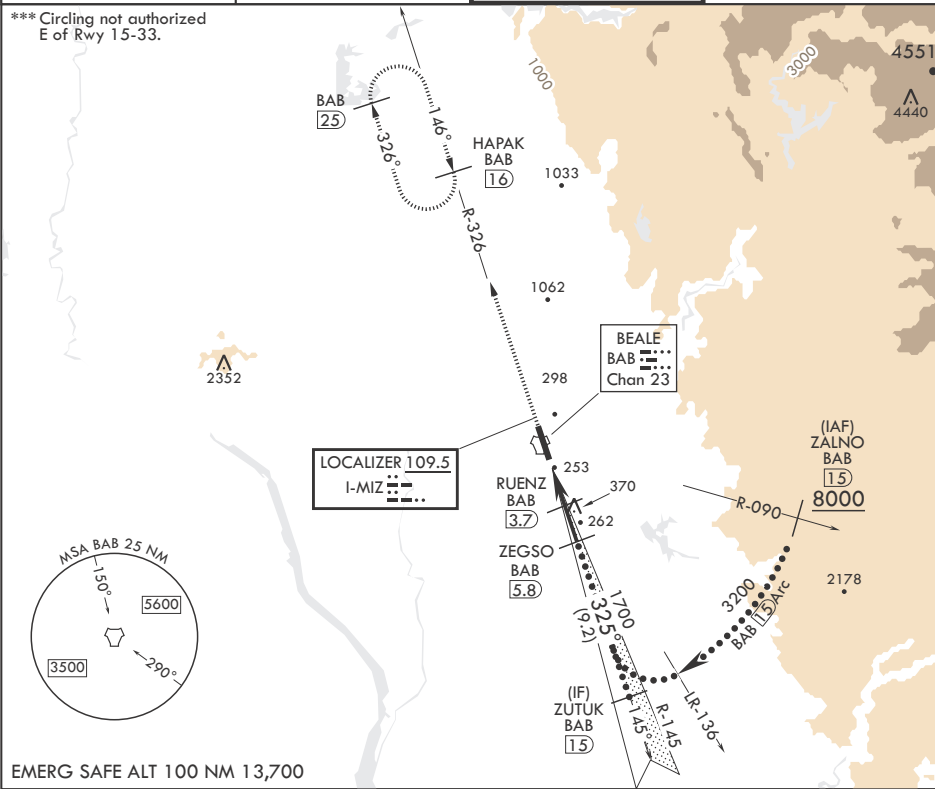
ALSF-1



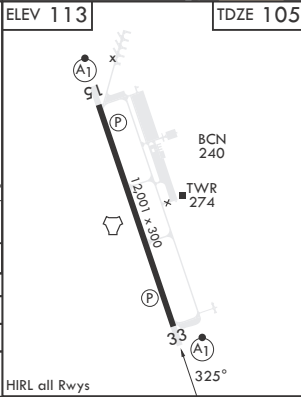
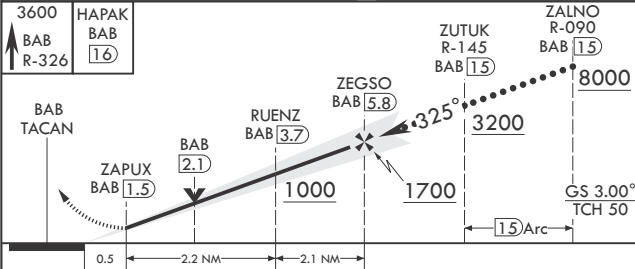
MISSED APPROACH: Climb to 3600 intercept BAB R-326 to HAPAK and hold.

ATIS* 124.55 273.5	NORCAL APP CON 125.4 259.1	TOWER* 119.4 284.75	GND CON 121.6 257.75
------------------------------	--------------------------------------	-------------------------------	--------------------------------

*** Circling not authorized E of Rwy 15-33.



EMERG SAFE ALT 100 NM 13,700



CATEGORY	C	D	E
S-ILS 33*	305/24	200	(200-1/2)
S-LOC 33**	520/40	415	(500-3/4)
▲ CIRCLING***	600-1 1/2 487 (500-1 1/2)	800-2 1/4 687 (700-2 1/4)	800-2 1/2 687 (700-2 1/2)

MARYSVILLE, CALIFORNIA

39°08'N - 121°26'W

BEALE AFB (KBAB)

Amdt 6 25JAN24

HI-ILS or LOC Z RWY 33

SW-2, 17 APR 2025 to 15 MAY 2025

SW-2, 17 APR 2025 to 15 MAY 2025