

MARYSVILLE, CALIFORNIA

TACAN Y RWY 15

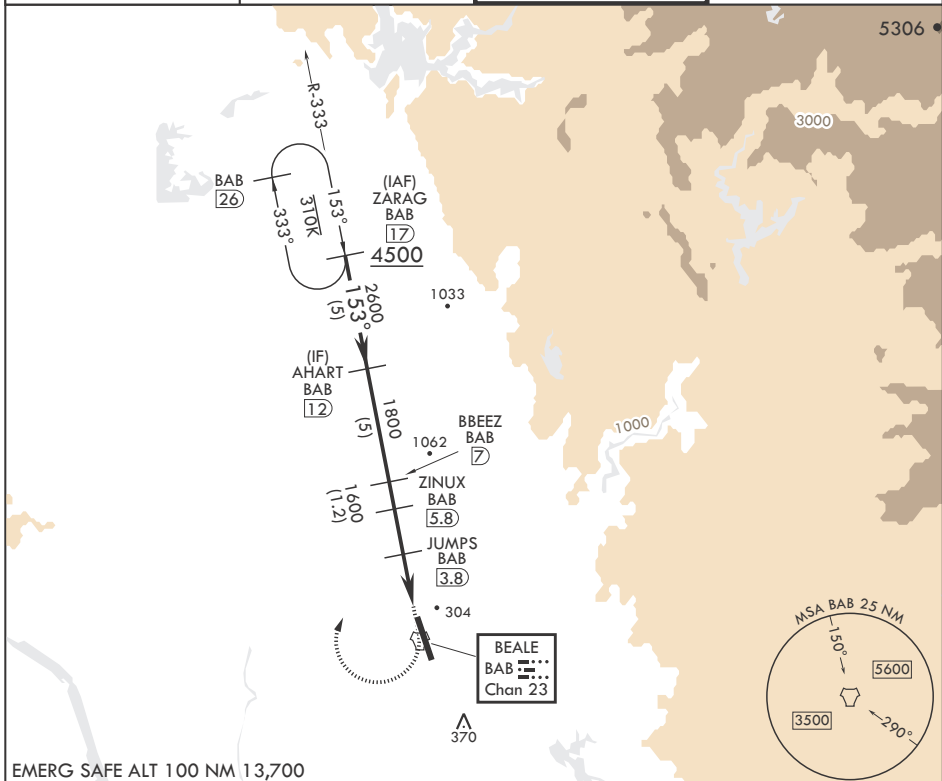
TACAN BAB Chan 23	APCH CRS 153°	Rwy ldg 12,001	TDZE 113
		Arprt Elev 113	

-(USAF)

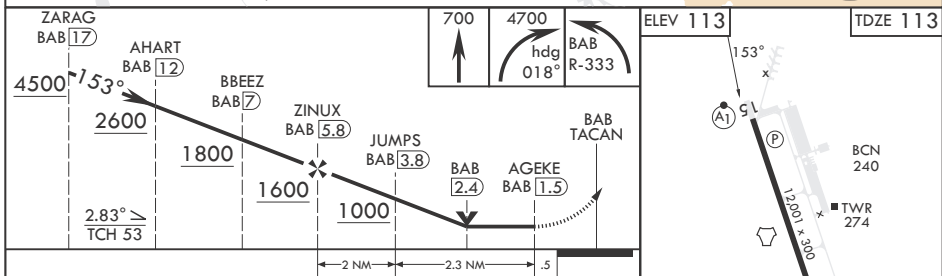
BEALE AFB (KBAB)

ALSIF-1 MISSED APPROACH: Climb to 700 on heading 153°, then climbing right turn to 4700 heading 018° to intercept BAB R-333 and hold, continue climb-in-hold to 4700.

ATIS* 124.55 273.5	NORCAL APP CON 125.4 259.1	TOWER* 119.4 284.75	GND CON 121.6 257.75
-----------------------	-------------------------------	------------------------	-------------------------



EMERG SAFE ALT 100 NM 13,700



CATEGORY	A	B	C	D	E
S-15*	560/24 447 (500-½)		560/45 447		(500-¾)
C CIRCLING**	600-1 487 (500-1)		600-1½ 487 (500-1½)	800-2¼ 687 (700-2¼)	800-2½ 687 (700-2½)

HIRL all Rwy's

MARYSVILLE, CALIFORNIA

39°08'N - 121°26'W

BEALE AFB (KBAB)

Amdt 6 22FEB24

TACAN Y RWY 15

SW-2, 17 APR 2025 to 15 MAY 2025

SW-2, 17 APR 2025 to 15 MAY 2025