


WAAS CH 62815 W32A	APP CRS 325°	Rwy Idg 6602 TDZE 1099 Apr Elev 1099
--	------------------------	---

RNAV (GPS) RWY 32

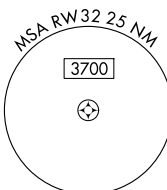
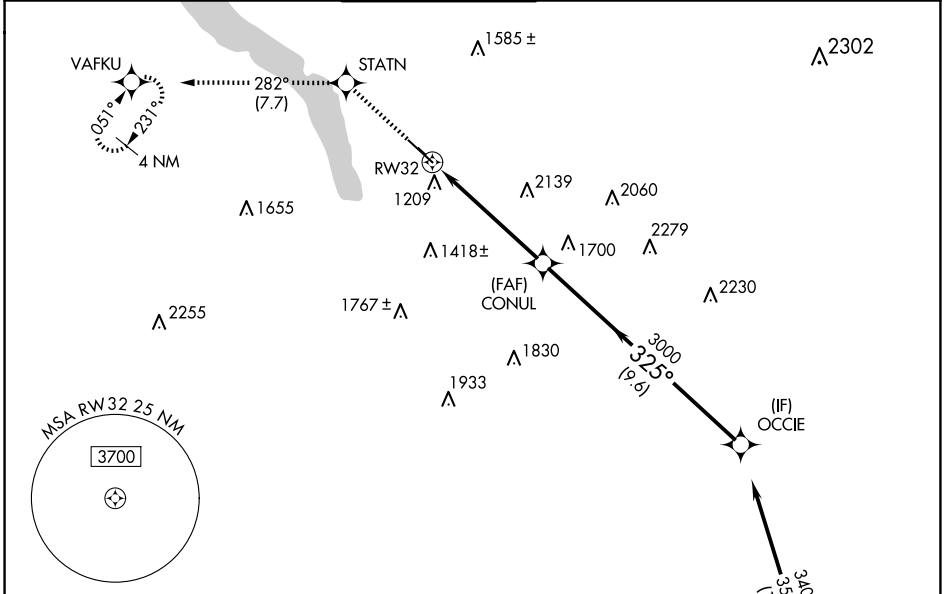
ITHACA TOMPKINS INTL (ITH)

RNP APCH - GPS.

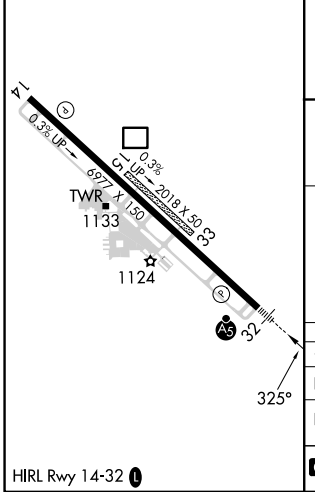
⚠ Rwy 32 helicopter visibility reduction below 3/4 SM NA. Circling NA to Rws 15 and 33. Inop table does not apply to LNAV Cat A/C/D.
⚠ For inop ALS, increase LPV all Cats visibility to RVR 4500.
⚠ -19°C

MALSR 
MISSED APPROACH: Climb to 3700 direct STATN and on track 282° to VAFKU and hold.

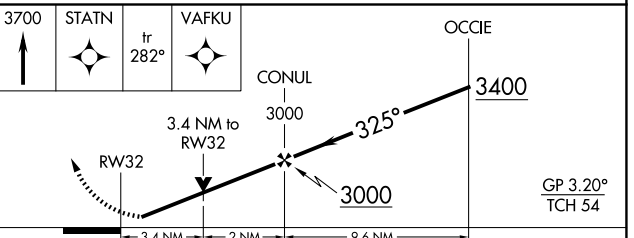
ATIS 125.175	ELMIRA APP CON ★ 124.3 257.8	ITHACA TOWER ★ 119.6 (CTAF) 0	GND CON 121.8	CLNC DEL 121.8	UNICOM 122.95
------------------------	--	--	-------------------------	--------------------------	-------------------------



ELEV 1099	D	TDZE 1099
-----------	----------	-----------



Procedure NA for arrival on CFB VOR/DME airway radials 310 CW 015.



CATEGORY	A	B	C	D
LPV DA	1385/24		286 (300-1/2)	
LNAV MDA	2300/40 1201 (1300-3/4)	2300/55 1201 (1300-1)	2300-3	1201 (1300-3)
C CIRCLING	2300-1 1/4 1201 (1300-1 1/4)	2300-1 1/2 1201 (1300-1 1/2)	2300-3 1201 (1300-3)	2440-3 1341 (1400-3)

NE-2, 17 APR 2025 to 15 MAY 2025

NE-2, 17 APR 2025 to 15 MAY 2025