

LOC/DME I-PAJ <b>109.1</b> Chan 28	APP CRS <b>191°</b>	Rwy Idg <b>10801</b> TDZE <b>991</b> Apt Elev <b>1027</b>
--	------------------------	---

# ILS RWY 19R (CAT II & III)

KANSAS CITY INTL (MCI)

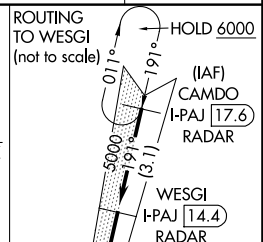
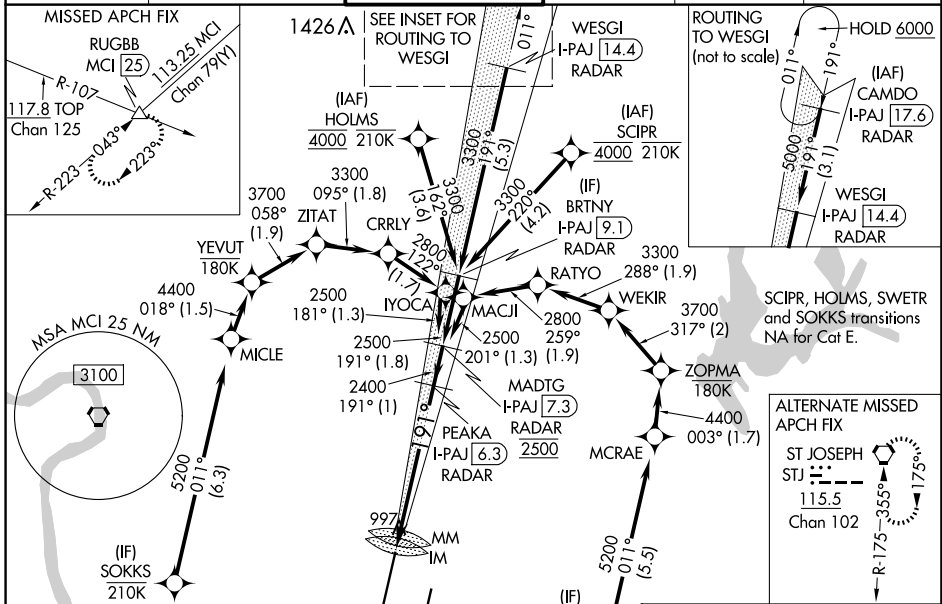
RNP APCH - GPS. From SCIPR or HOLMS or SWETR or SOKKS.  
 DME or RADAR required. RADAR required for procedure entry at CAMDO.  
 Simultaneous approach authorized except from SCIPR and HOLMS, SOKKS, and SWETR. CAT II: RVR 1000 authorized with specific OPSPEC, MSPEC, or LOA approval and use of autoland or HUD to touchdown.

ALSF-2

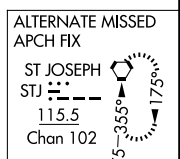


MISSED APPROACH: Climb to 2000 then climbing right turn to 4000 on heading 240° and on MCI VORTAC R-223 to RUGBB INT/MCI 25 DME and hold.

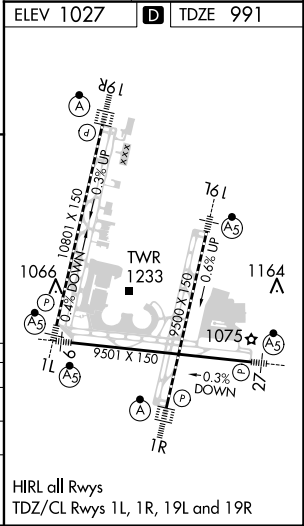
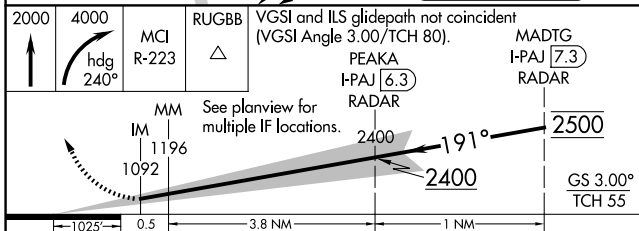
D-ATIS <b>128.375</b>	KANSAS CITY APP CON <b>120.95 318.1</b>	INTERNATIONAL TOWER <b>128.2 254.25</b>	GND CON <b>121.8</b>	CLNC DEL <b>135.7</b>	CPDLC
--------------------------	--	--	-------------------------	--------------------------	-------



SCIPR, HOLMS, SWETR and SOKKS transitions NA for Cat E.



ELEV 1027	TDZE 991
LOCALIZER 109.1 I-PAJ Chan 28	



CATEGORY	A	B	C	D	E
S-ILS 19R	CAT II RA 105/12 100 DA 1091				
S-ILS 19R	CAT III RVR 07				

## CATEGORY II & III ILS - SPECIAL AIRCREW & AIRCRAFT CERTIFICATION REQUIRED

HIRL all Rwys  
 TDZ/CL Rwys 1L, 1R, 19L and 19R

NC-3, 17 APR 2025 to 15 MAY 2025

NC-3, 17 APR 2025 to 15 MAY 2025