

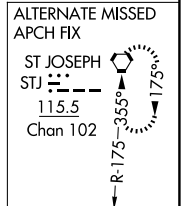
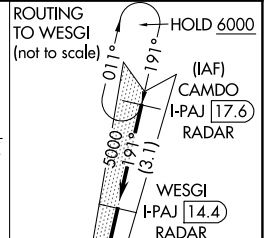
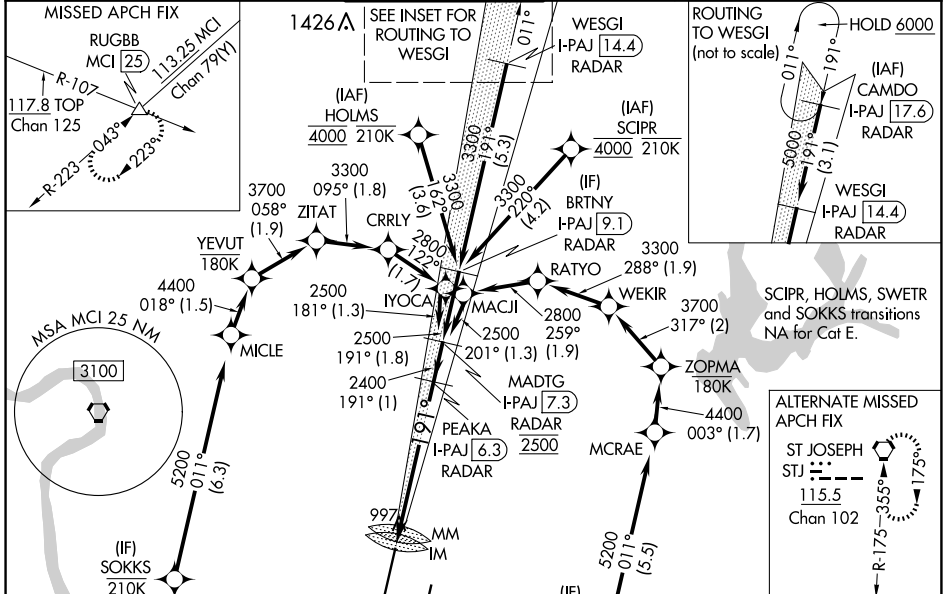
LOC/DME I-PAJ 109.1 Chan 28	APP CRS 191°	Rwy Idg 10801 TDZE 991 Apt Elev 1027
--	------------------------	---

ILS RWY 19R (SA CAT I)

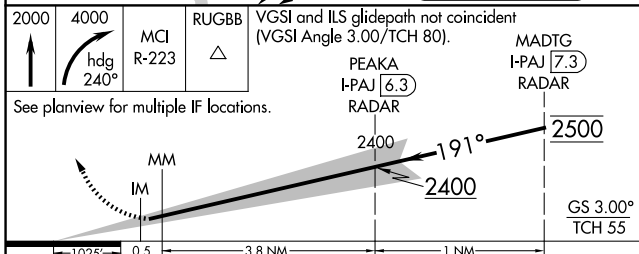
KANSAS CITY INTL (MCI)

RNP APCH - GPS. From SCIPR or HOLMS or SWETR or SOKKS.		ALSF-2	MISSED APPROACH: Climb to 2000 then climbing right turn to 4000 on heading 240° and MCI VORTAC R-223 to RUGBB INT/MCI 25 DME and hold.
DME or RADAR required. RADAR required for procedure entry at CAMDO.			
Requires specific OPSPEC, MSPEC, or LOA approval. Simultaneous approach authorized except from SCIPR, HOLMS, SOKKS, and SWETR.			

D-ATIS 128.375	KANSAS CITY APP CON 120.95 318.1	INTERNATIONAL TOWER 128.2 254.25	GND CON 121.8	CLNC DEL 135.7	CPDLC
--------------------------	--	--	-------------------------	--------------------------	-------

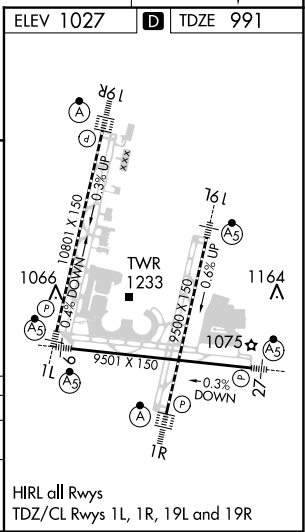


ELEV 1027	D TDZE 991
LOCALIZER 109.1 I-PAJ Chan 28	



CATEGORY	A	B	C	D	E
S-ILS 19R	RA 135/14 150 DA 1141				

SA CATEGORY I ILS - SPECIAL AIRCREW & AIRCRAFT CERTIFICATION REQUIRED



NC-3, 17 APR 2025 to 15 MAY 2025

NC-3, 17 APR 2025 to 15 MAY 2025

HIRL all Rwys
TDZ/CL Rwys 1L, 1R, 19L and 19R