


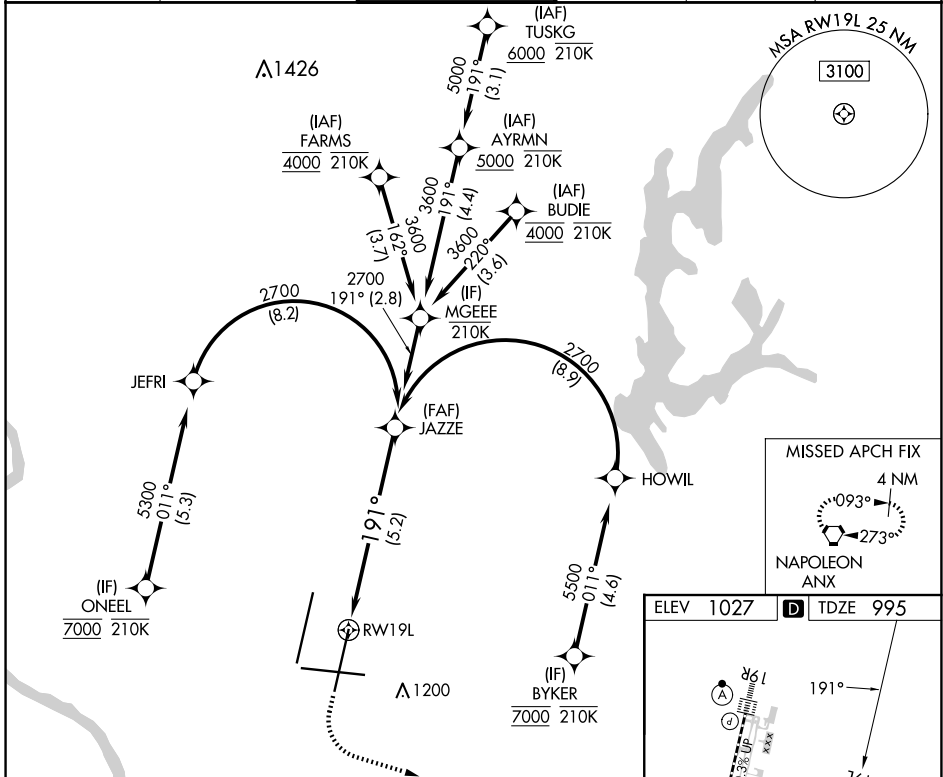
APP CRS	Rwy Idg	9500
191°	TDZE	995
	Apt Elev	1027

RNAV (RNP) Z RWY 19L

KANSAS CITY INTL (MCI)

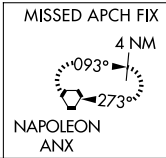
RNP AR APCH - GPS.		MALSR	 <p>MISSED APPROACH: Climb to 1500 then climbing left turn to 4000 direct ANX VORTAC and hold.</p>
<p>▼ Use of FD or AP required during simultaneous operations. For uncompensated Baro-VNAV systems, procedure NA below -21°C or above 54°C. Simultaneous approach authorized, except for arrivals at ONEEL, BYKER, FARMS and BUDIE. For inop ALS, increase RNP 0.20 all Cats visibility to RVR 4500 and RNP 0.30 all Cats visibility to RVR 5500.</p>			

D-ATIS	KANSAS CITY APP CON	INTERNATIONAL TOWER	GND CON	CLNC DEL	CPDLC
128.375	120.95 318.1	128.2 254.25	121.8	135.7	

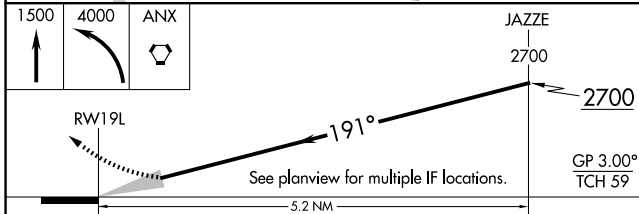
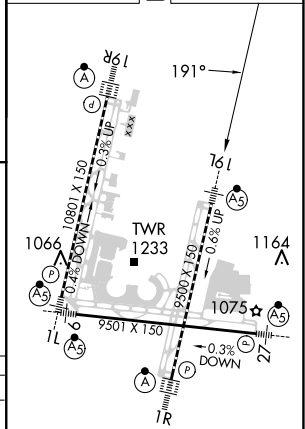


NC-3, 17 APR 2025 to 15 MAY 2025

NC-3, 17 APR 2025 to 15 MAY 2025



ELEV 1027	D TDZE 995
-----------	-------------------



1500	4000	ANX	JAZZE
↑	↷	⬡	2700
RWY 19L		GP 3.00°	
		TCH 59	
-5.2 NM-			
CATEGORY	A	B	C
RNP 0.20 DA		1310/24	315 (300-½)
RNP 0.30 DA		1365/35	370 (400-¾)

AUTHORIZATION REQUIRED

HIRL all Rwwys
TDZ/CL Rwwys 1L, 1R, 19R and 19L