

WAAS CH <b>42808</b> <b>W01B</b>	APP CRS <b>011°</b>	Rwy ldg <b>10801</b> TDZE <b>1014</b> Apt Elev <b>1027</b>
--	------------------------	--


# RNAV (GPS) Y RWY 1L

KANSAS CITY INTL (MCI)

RNP APCH - GPS.

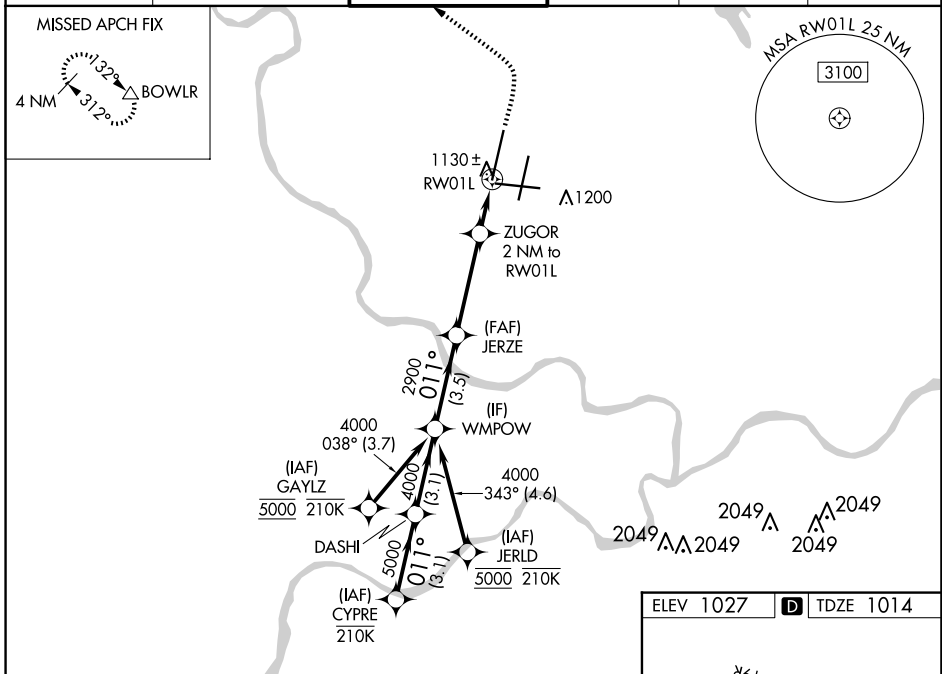
▼ Use of FD or AP required during simultaneous operations. LNAV procedure NA during simultaneous operations. For uncompensated Baro-VNAV systems, LNAV/VNAV NA below -19°C or above 54°C. For inop ALS, increase LNAV/VNAV all Cats visibility to RVR 4500 and LNAV Cats C/D visibility to RVR 5500. Simultaneous approach authorized except from GAYLZ and JERLD.

MALSR

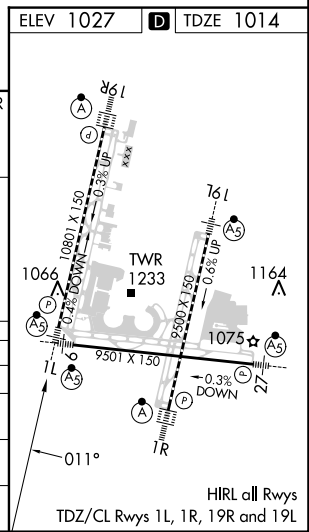


MISSED APPROACH: Climb to 2000 then climbing left turn to 4000 direct BOWLR and hold.

D-ATIS <b>128.375</b>	KANSAS CITY APP CON <b>120.95 318.1</b>	INTERNATIONAL TOWER <b>128.2 254.25</b>	GND CON <b>121.8</b>	CLNC DEL <b>135.7</b>	CPDLC
--------------------------	--	--	-------------------------	--------------------------	-------



CYPRE	VGSI and RNAV glidepath not coincident (VGSI Angle 3.00/TCH 78).			2000	4000	BOWLR
6000	011°	5000	4000	2900	1700	
GP 3.00° TCH 57						
	3.1 NM	3.1 NM	3.5 NM	3.7 NM	1.1 NM	0.9 NM
CATEGORY	A	B	C	D		
LPV DA		1214/18	200 (200-½)			
LNAV/VNAV DA		1328/24	314 (400-½)			
LNAV MDA	1380/24	366 (400-½)	1380/35	366 (400-¾)		
CIRCLING	1540-1	513 (600-1)	1540-1½	513 (600-½)	1580-2	553 (600-2)



NC-3, 17 APR 2025 to 15 MAY 2025

NC-3, 17 APR 2025 to 15 MAY 2025