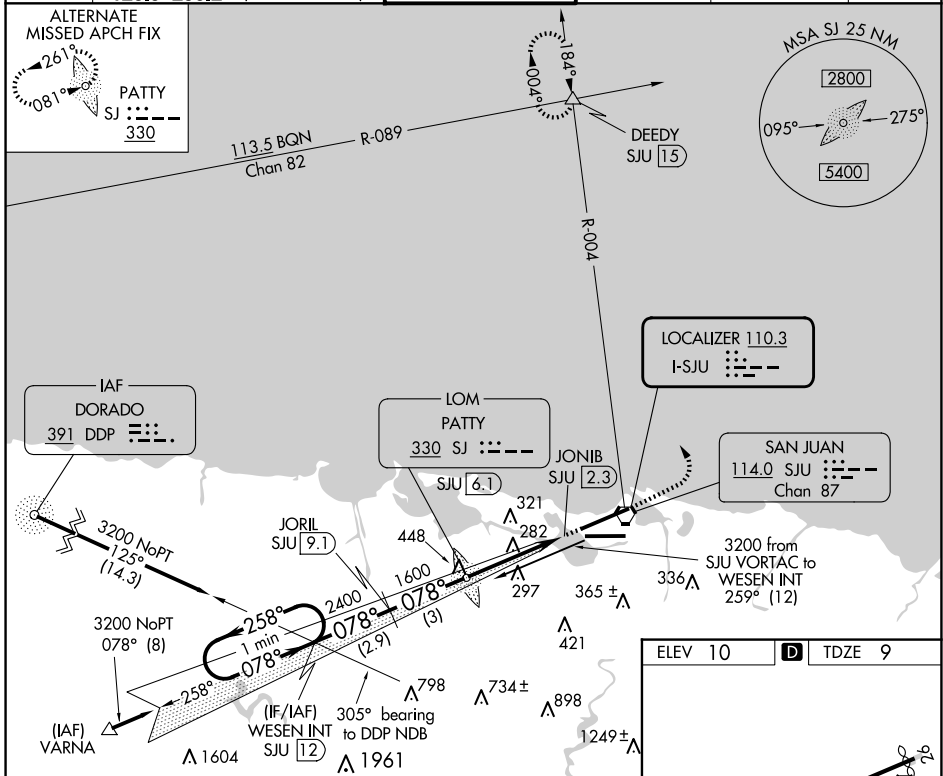


LOC I-SJU <b>110.3</b>	APP CRS <b>078°</b>	Rwy Idg <b>9384</b>
		TDZE <b>9</b>
		Apt Elev <b>10</b>

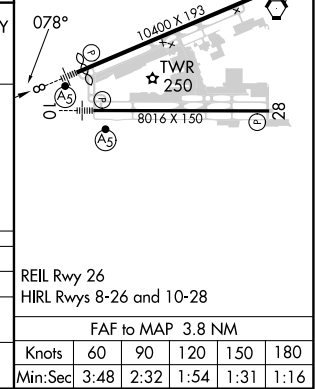
# ILS or LOC RWY 8

LUIS MUNOZ MARIN INTL (SJU)(TJSJ)

DME required.		MALSR 	MISSED APPROACH: Climb to 2000 then climbing left turn to 3000 on heading 320° and SJU VORTAC R-004 to DEEDY Int/SJU 1.5 DME and hold.		
▼ For inop ALS, increase S-ILS 8 all Cats visibility to 1 SM.					
D-ATIS <b>125.8</b>	SAN JUAN APP CON <b>119.4 269.2</b> (WEST & SW) <b>120.9 290.2</b> (NORTH & EAST)		SAN JUAN TOWER <b>132.05 257.8</b>	GND CON <b>121.9 348.6</b>	CLNC DEL <b>126.4 284.6</b>
				CPDLC	



One Minute Holding Pattern	WESEN INT SJU [12]	JORIL SJU [9.1]	PATTY LOM	ILS unusable 0.8 NM from threshold inbound.
<b>3200</b> ← 258°	← 078°	← 078°	← 078°	
GS 3.00° TCH 46	2400	1541	1600	
VGSi and ILS glidepath not coincident (VGSi Angle 3.00/TCH 70).				
	2.9 NM	3 NM	3.8 NM	0.8
CATEGORY	A	B	C	D
S- ILS-8	311-½		302 (400-½)	
S- LOC-8	560-½	551 (600-½)	560-1 551 (600-1)	560-1½ 551 (600-1¼)
CIRCLING	600-1	590 (600-1)	740-2 730 (800-2)	920-3 910 (1000-3)



SE-3, 17 APR 2025 to 15 MAY 2025

SE-3, 17 APR 2025 to 15 MAY 2025

REIL Rwy 26					
HIRL Rwys 8-26 and 10-28					
FAF to MAP 3.8 NM					
Knots	60	90	120	150	180
Min:Sec	3:48	2:32	1:54	1:31	1:16