

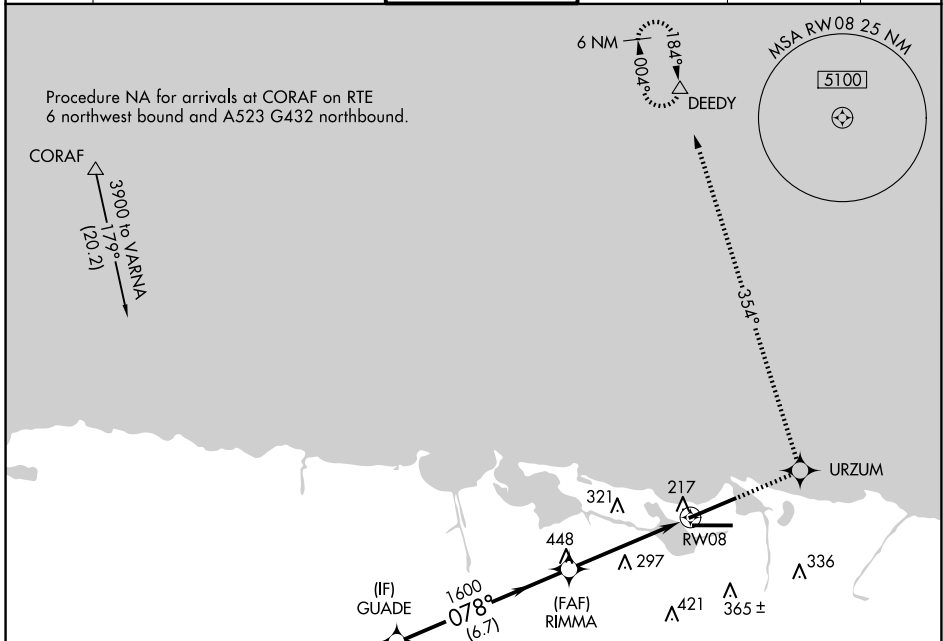
APP CRS	Rwy Idg	<b>9384</b>
<b>078°</b>	TDZE	<b>9</b>
	Apt Elev	<b>10</b>

# RNAV (GPS) RWY 8

LUIS MUNOZ MARIN INTL (SJU)(TJSJ)

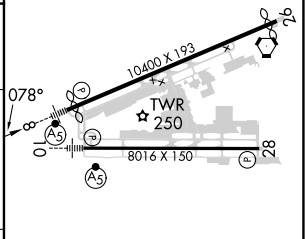
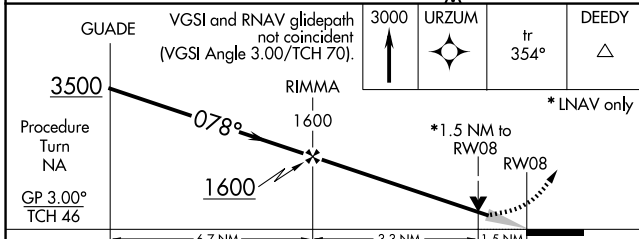
<b>⚠</b>	WAAS VNAV NA. For uncompensated Baro-VNAV systems, LNAV/VNAV NA below -15°C (5°F) or above 48°C (118°F). DME/DME RNP-0.3 NA.	<b>MALS</b> 	MISSED APPROACH: Climb to 3000 direct URZUM and on track 354° to DEEDY and hold.
----------	--	-----------------	--

D-ATIS	SAN JUAN APP CON	SAN JUAN TOWER	GND CON	CLNC DEL	CPDLC
<b>125.8</b>	<b>119.4 269.2</b> (WEST & SW) <b>120.9 290.2</b> (NORTH & EAST)	<b>132.05 257.8</b>	<b>121.9 348.6</b>	<b>126.4 284.6</b>	



(IAF) VARNA	(IF) GUADE	(FAF) RIMMA	URZUM	DEEDY
3500 078° (7)	1600 078° (6.7)	1600 354° (3.3)	3000	3000

ELEV 10	<b>D</b>	TDZE 9
---------	----------	--------



CATEGORY	A	B	C	D
LNAV/VNAV DA	530-1¼ 521 (600-1¼)			
LNAV MDA	560-½ 551 (600-½)	560-1 551 (600-1)	560-1¼ 551 (600-1¼)	
<b>C</b> CIRCLING	600-1 590 (600-1)	740-2 730 (800-2)	920-3 910 (1000-3)	

SE-3, 17 APR 2025 to 15 MAY 2025

SE-3, 17 APR 2025 to 15 MAY 2025