

LOC I-BLF 109.5	APP CRS 229°	Rwy ldg TDZE Apt Elev	4743 2857 2857
---------------------------	------------------------	-----------------------------	---

ILS or LOC RWY 23

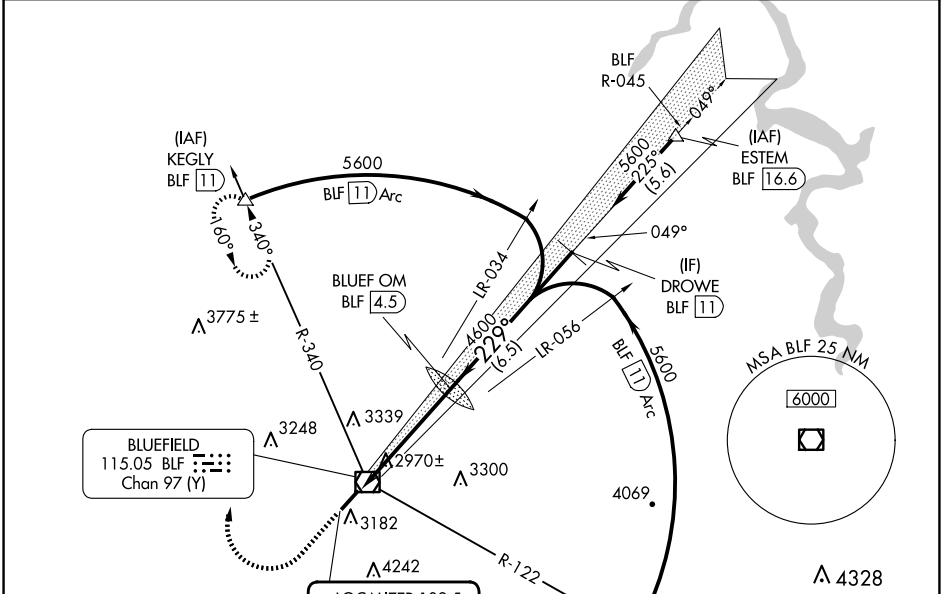
MERCER COUNTY (BLF)

DME required.

⚠ Autopilot coupled approach NA below 3600 MSL. When local altimeter setting not received, use BKW altimeter setting and increase S-ILS 23 DA to 3600 feet and all visibilities 1 SM; increase all MDAs 460 feet and S-LOC 23 all visibilities 1 1/8 SM, and Circling Cat A/B/C 3/4 SM. Circling NA southeast of Rwy 5-23.

MISSED APPROACH: Climb to 3800 then climbing right turn to 6000 on heading 020° and BLF VOR/DME R-340 to KEGLY/BLF 11 DME and hold.

ASOS 132.725	INDIANAPOLIS CENTER 126.575 257.85	CTAF 122.9 0
------------------------	--	------------------------

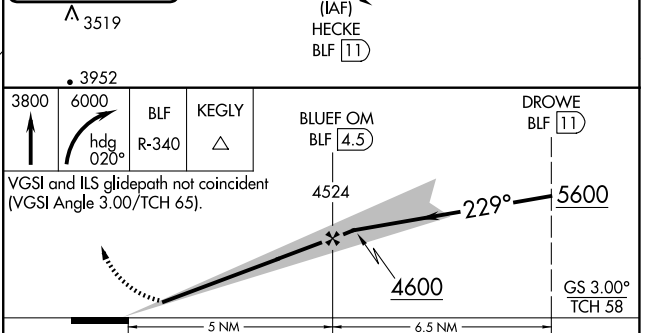
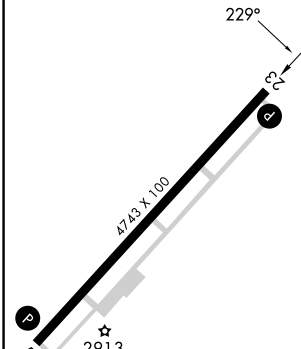


NE-4, 17 APR 2025 to 15 MAY 2025

NE-4, 17 APR 2025 to 15 MAY 2025

ELEV 2857	D	TDZE 2857
-----------	----------	-----------

LOCALIZER 109.5
I-BLF



CATEGORY	A	B	C	D
S-ILS 23	3157-1		300 (300-1)	
S-LOC 23	3520-1	663 (700-1)	3520-1 7/8 663 (700-1 7/8)	3520-2 663 (700-2)
CIRCLING	3520-1	663 (700-1)	3640-2 1/4 783 (800-2 1/4)	3780-3 923 (1000-3)