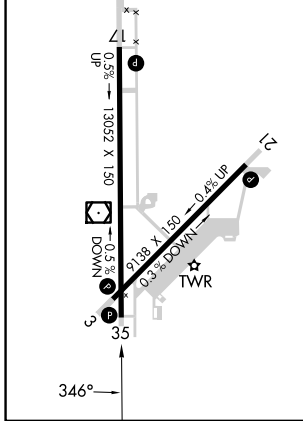
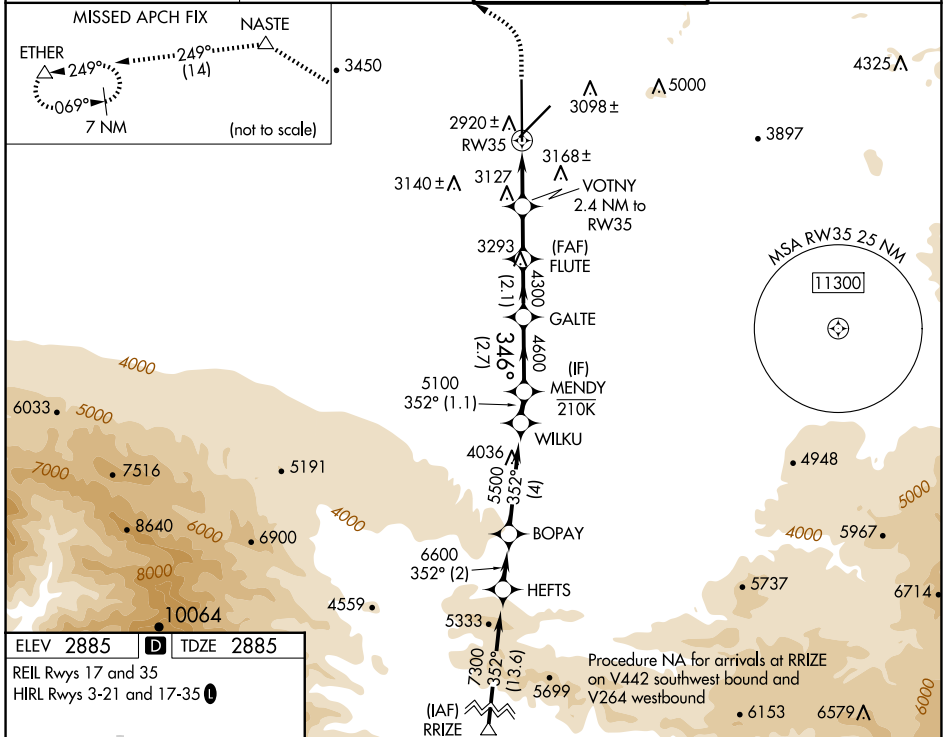


WAAS CH 97746 W35A	APP CRS 346°	Rwy Idg TDZE 2885 Apt Elev 2885	13052 2885 2885
--	------------------------	---	--

RNAV (GPS) RWY 35

SOUTHERN CALIFORNIA LOGISTICS (V_CV)

RNP APCH - GPS.		MISSED APPROACH: Climb to 3500 then climbing left turn to 6000 direct NASTE and on track 249° to ETHER and hold.	
<p>⚠ Circling NA for C and D southeast of Rws 35 and 21. ⚠ For uncompensated Baro-VNAV systems, LNAV/VNAV NA below -20°C or above 54°C.</p>	<p>ATIS 135,475</p>	<p>JOSHUA APP CON 124.55 363.0</p>	<p>VICTORVILLE TOWER ★ 118.35(CTAF) 282.225</p>
		<p>GND CON 124.45</p>	



3500	6000	NASTE	tr 249°	ETHER	VGSi and RNAV glidepath not coincident (VGSi Angle 3.00/TCH 64).			
					FLUTE	GALTE	MENDY	
					4300	4600	5100	GP 3.00° TCH 60
					1.4 NM	1 NM	1.9 NM	2.1 NM
					2.7 NM			
CATEGORY	A		B		C		D	
LPV DA	3085-1		200 (200-1)					
LNAV/VNAV DA	3411-1½		526 (600-1½)					
LNAV MDA	3380-1		495 (500-1)		3380-1⅓		495 (500-1⅓)	
CIRCLING	3380-1 495 (500-1)		3420-1 535 (600-1)		3460-1½ 575 (600-1½)		3760-2¾ 875 (900-2¾)	

SW-3, 17 APR 2025 to 15 MAY 2025

SW-3, 17 APR 2025 to 15 MAY 2025