

WAAS CH <b>72925</b> <b>W04A</b>	APP CRS <b>035°</b>	Rwy Idg TDZE <b>2380</b> Apt Elev <b>2380</b>
--	------------------------	---

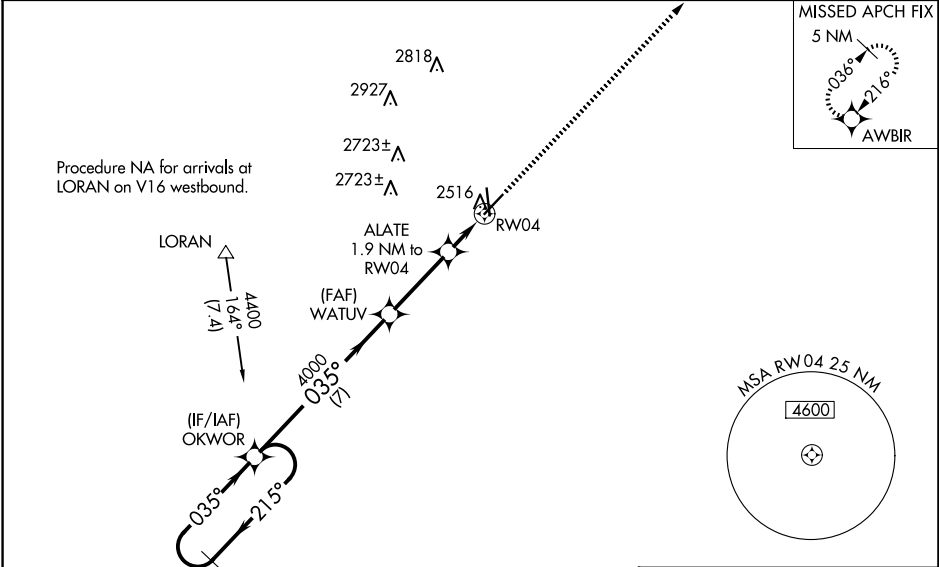
# RNAV (GPS) RWY 4

AVENGER FLD (SWW)

**⚠** Baro-VNAV NA when using Snyder altimeter setting. For uncompensated Baro-VNAV systems, LNAV/VNAV NA below -19°C (-2°F) or above 29°C (84°F). DME/DME RNP-0.3 NA. Visibility reduction by helicopters NA. When local altimeter setting not received, use Snyder altimeter setting and increase LPV DA to 2702 feet and LNAV/VNAV DA to 2799 feet, and all MDAs 80 feet; increase LPV visibility all Cats 1/8 SM, LNAV/VNAV visibility all Cats 1/4 SM, LNAV visibility Cats C/D 1/8 SM, and Circling Cats C/D visibility 1/4 SM. When VGSI inop, Straight-in/ Circling Rwy 4 procedure NA at night. When VGSI inop, Circling Rwy 17 and 22 NA at night.

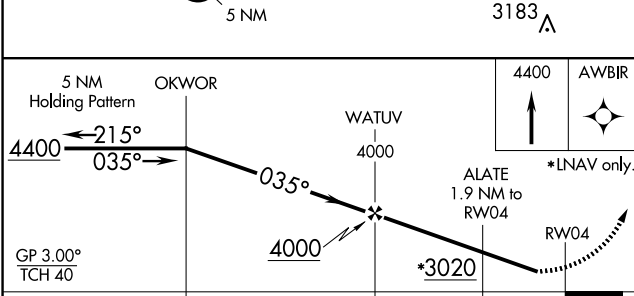
**MISSED APPROACH:**  
Climb to 4400 direct  
AWBIR and hold.

AWOS-3 <b>119.025</b>	ABILENE APP CON <b>127.2 282.3</b>	UNICOM <b>122.8</b> (CTAF)
--------------------------	---------------------------------------	-------------------------------



SC-2, 17 APR 2025 to 15 MAY 2025

SC-2, 17 APR 2025 to 15 MAY 2025



CATEGORY	A	B	C	D
LPV DA	2630-1		250 (300-1)	
LNAV/VNAV DA	2727-1 1/8		347 (400-1 1/8)	
LNAV MDA	2820-1 440 (500-1)		2820-1 1/4 440 (500-1 1/4)	
CIRCLING	2880-1 500 (500-1)		3080-2 700 (700-2) 3080-2 1/4 700 (700-2 1/4)	

