

LOM UI	APP CRS	Rwy Idg	<b>7098</b>
<b>293</b>	<b>038°</b>	TDZE	<b>763</b>
		Apt Elev	<b>768</b>

# NDB RWY 4

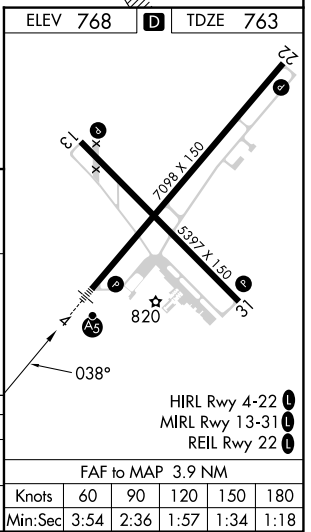
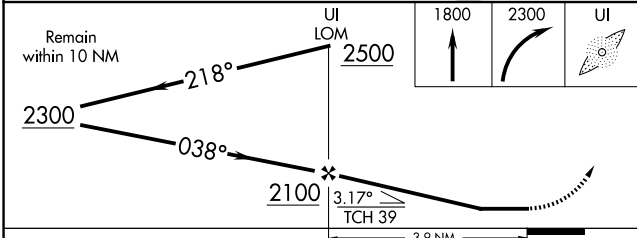
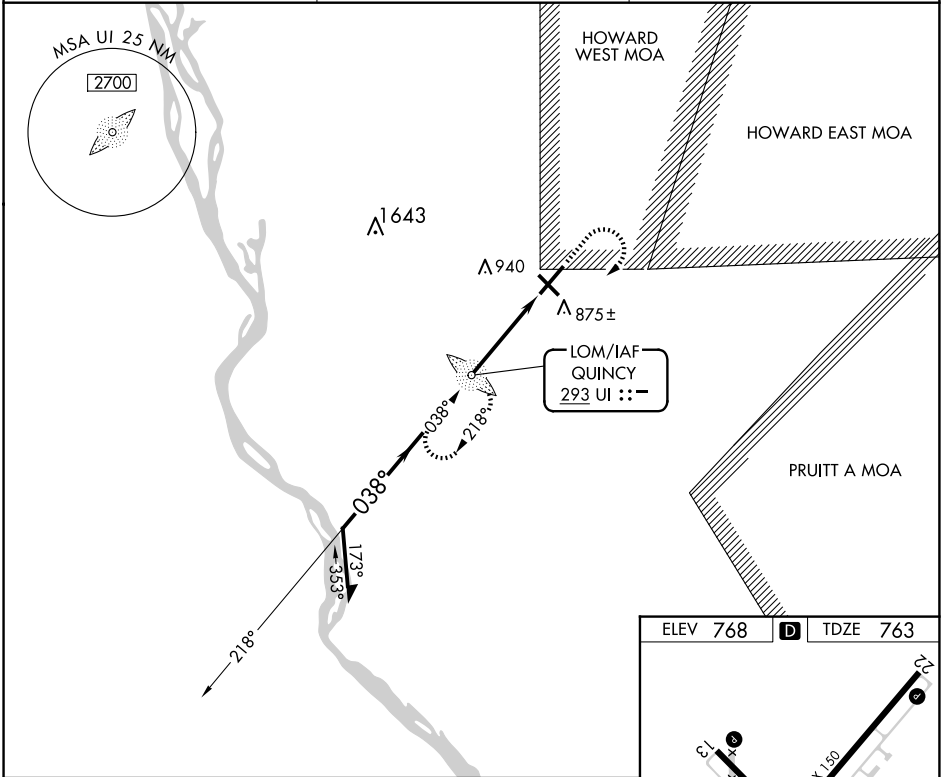
QUINCY RGNL-BALDWIN FLD (UIN)

**NA** For inop ALS, increase S-04 Cat A and B visibility to 1 SM and Cat C and D visibility to 1 1/2 SM. When local altimeter setting not received, use Pittsfield altimeter setting and increase all MDAs 80 feet and S-04 visibility Cat C/D 1/4 SM. For inop ALS when local altimeter setting not received increase S-04 Cat A/B visibility to 1 SM and Cat C/D visibility to 1 1/2 SM.



**MISSED APPROACH:** Climb to 1800 then climbing right turn to 2300 direct UI LOM and hold.

<b>ASOS</b> <b>121.425</b>	<b>KANSAS CITY CENTER</b> <b>126.225 317.775</b>	<b>UNICOM</b> <b>123.0 (CTAF)</b>
-------------------------------	---	--------------------------------------



CATEGORY	A	B	C	D
S-4	1180-3/4 417 (500-3/4)			
<b>CIRCLING</b>	1180-1 412 (500-1)	1220-1 452 (500-1)	1240-1 1/2 472 (500-1 1/2)	1320-2 552 (600-2)

EC-3, 17 APR 2025 to 15 MAY 2025

EC-3, 17 APR 2025 to 15 MAY 2025