

|  |                        |   |             |
|--|------------------------|---|-------------|
| WAAS<br>CH <b>53510</b><br><b>W04A</b> | APP CRS<br><b>038°</b> | Rwy Idg<br>TDZE <b>763</b><br>Apt Elev <b>768</b> | <b>7098</b> |
|--|------------------------|---|-------------|


# RNAV (GPS) RWY 4

QUINCY RGNL-BALDWIN FLD (UIN)

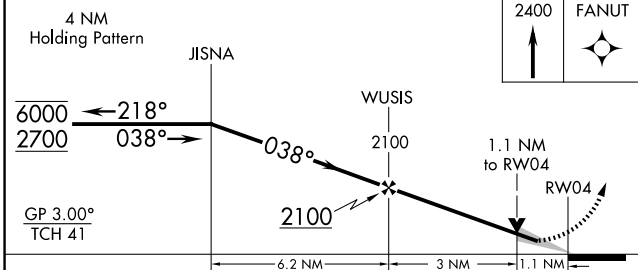
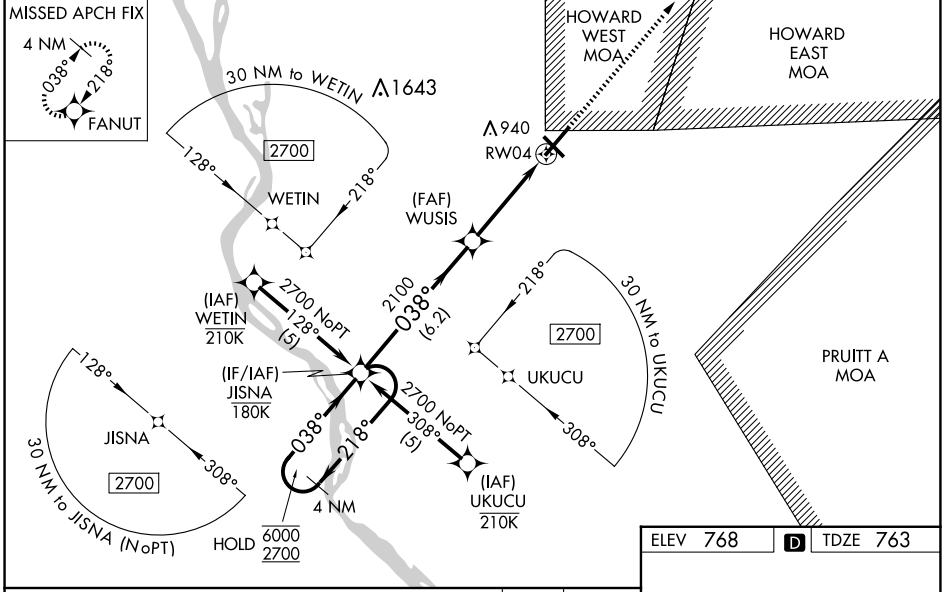
RNP APCH - GPS.

**▼** For uncompensated Baro-VNAV systems, LNAV/VNAV NA below -21°C or above 54°C. Baro-VNAV and VDP NA when using P/Q altimeter setting. When local altimeter setting not received, use Pittsfield altimeter setting and increase LPV DA to 1033 feet; increase LNAV/VNAV DA to 1104 feet and all visibilities 1/8 SM. Increase all MDAs 80 feet and LNAV visibility Cat C/D 3/8 SM. For inop ALS when local altimeter setting not received, increase LPV all Cats visibility to 3/8 SM; increase LNAV/VNAV all Cats visibility to 1 SM; increase LNAV Cat C and D visibility to 1/8 SM. For inop ALS increase LNAV/VNAV all Cats visibility to 3/8 SM.

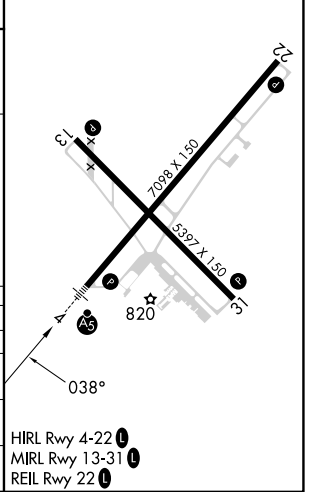
**▲** MISSED APPROACH: Climb to 2400 direct FANUT and hold.

MALSR 

|                        |  |                                 |
|------------------------|--|---------------------------------|
| ASOS<br><b>121.425</b> | KANSAS CITY CENTER<br><b>126.225 317.775</b> | UNICOM<br><b>123.0 (CTAF) 0</b> |
|------------------------|--|---------------------------------|



|          |          |          |
|----------|----------|----------|
| ELEV 768 | <b>D</b> | TDZE 763 |
|----------|----------|----------|



| CATEGORY     | A                     | B                     | C                             | D                     |
|--------------|-----------------------|-----------------------|-------------------------------|-----------------------|
| LPV DA       |                       | 963-1/2               | 200 (200-1/2)                 |                       |
| LNAV/VNAV DA |                       | 1034-1/2              | 271 (300-1/2)                 |                       |
| LNAV MDA     | 1160-1/2              | 397 (400-1/2)         | 1160-5/8                      | 397 (400-5/8)         |
| CIRCLING     | 1180-1<br>412 (500-1) | 1220-1<br>452 (500-1) | 1240-1 1/2<br>472 (500-1 1/2) | 1320-2<br>552 (600-2) |

EC-3, 17 APR 2025 to 15 MAY 2025

EC-3, 17 APR 2025 to 15 MAY 2025