

APP CRS	Rwy Idg	4000
329°	TDZE	692
	Apt Elev	692

RNAV (GPS) RWY 33

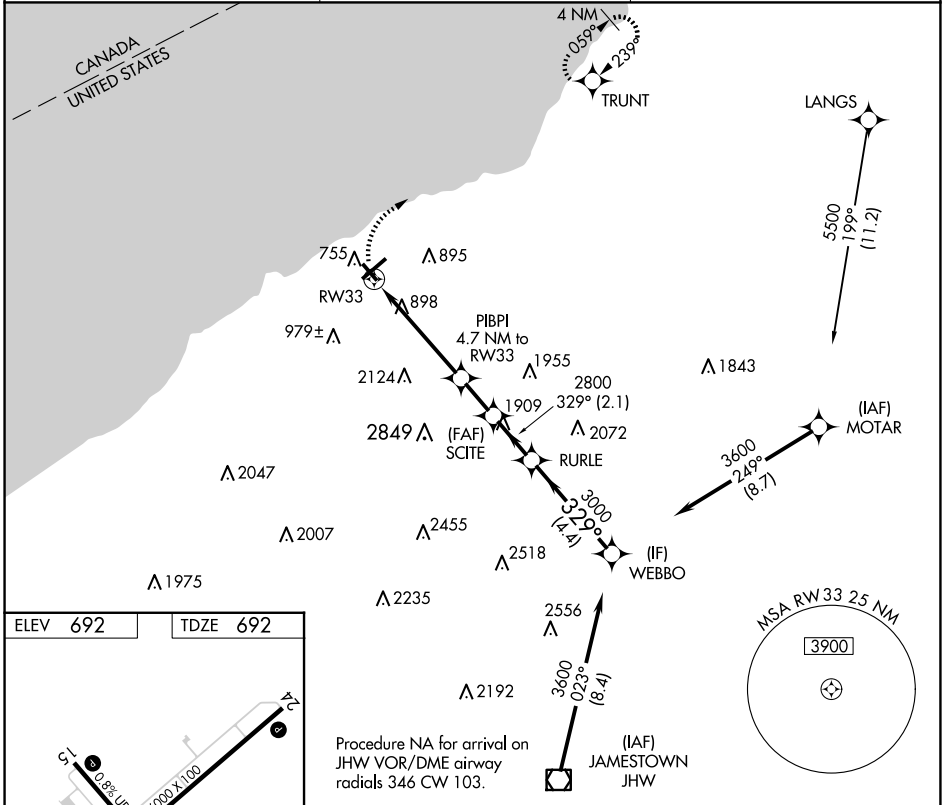
CHAUTAUGUA COUNTY/DUNKIRK (DKK)

RNP APCH.

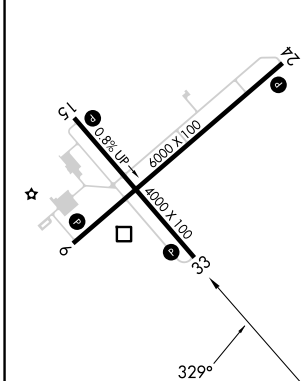
T Circling Cat D NA southeast of Rwy 6 and southwest of Rwy 33.
A Rwy 33 helicopter visibility reduction below 1 SM NA.
S -22°C Straight-In Rwy 33 NA at night, Circling Rwy 6, 24, 33 NA at night.

MISSED APPROACH: Climbing right turn to 3200 direct TRUNT and hold.

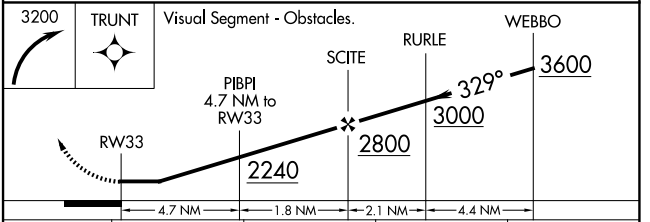
ASOS 119.275	BUFFALO APP CON 126.5 317.6	UNICOM 123.075 (CTAF) 0
------------------------	---------------------------------------	--



ELEV 692	TDZE 692
----------	----------



- MIRL Rwy 15-33 **0**
- REIL Rws 6 and 24 **0**
- HIRL Rwy 6-24 **0**



CATEGORY	A	B	C	D
LNAV MDA	1860-1¼ 1168 (1200-1¼)	1860-1½ 1168 (1200-1½)	1860-3	1168 (1200-3)
C CIRCLING	1860-1¼ 1168 (1200-1¼)	1860-1½ 1168 (1200-1½)	1860-3	2140-3 1448 (1500-3)

NE-2, 17 APR 2025 to 15 MAY 2025

NE-2, 17 APR 2025 to 15 MAY 2025